

Operating Costs

2013 Chevrolet Volt

VIN: 1G1RA6E40DU103929



Vehicle Specifications

Engine: 1.4 L, Inline 4-Cylinder

Electric Motor: 63 kW

Battery: Lithium-ion

Class: Compact

Seatbelt Positions: Four

Payload: 758 lbs

See Vehicle Specifications and Testing Results for more information

Fleet Performance

Operating Cost:

Purchase Cost: \$43,477¹

Purchase Date: November 2012

Resale Value as of : \$0²

Sale Price: \$3,235

Maintenance Cost: \$0.02/mile

Operating Cost: \$0.14/mile³

Total Ownership Cost: \$0.45/mile⁴

Operating Performance:

Total miles driven: 159,382

Cumulative MPG: 38.0

Cumulative AC Wh/mi: 56.500

Major Operations & Maintenance Events:

¹Purchase includes dealer price with options plus taxes. It does not include title, license, registration, extended warranty or delivery fee costs.

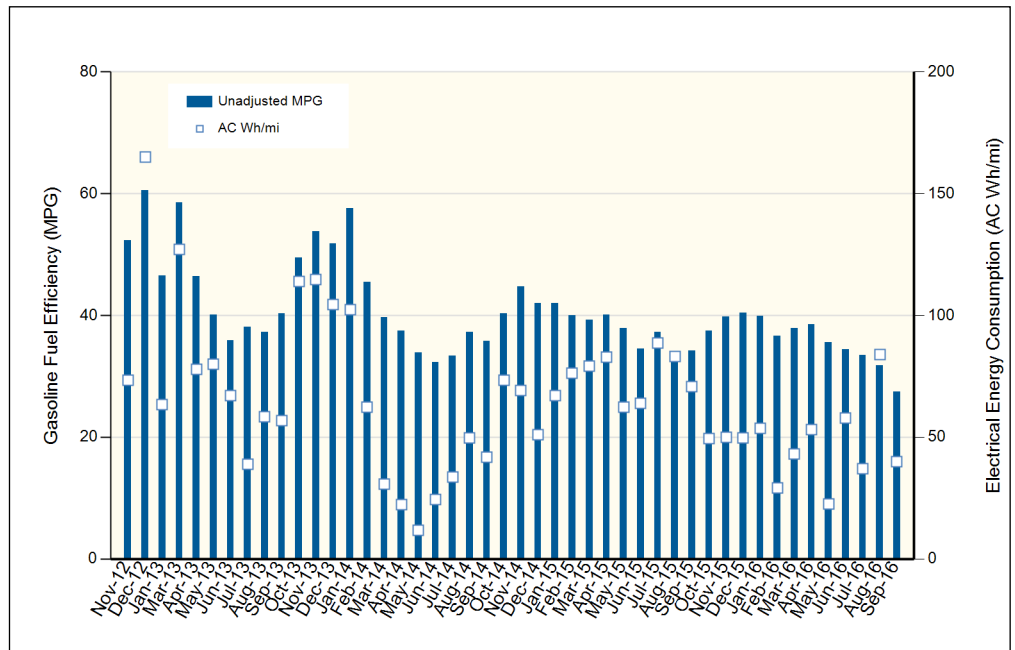
²Per Kelley Blue Book private resale estimate, www.kbb.com.

³Operating costs includes insurance, fuel, and registration costs

⁴Total ownership includes maintenance, operating, and capital depreciation

Description of Vehicle Usage:

This vehicle is operated by various commercial vehicle fleets throughout the Southwestern United States covering a mixture of city and highway routes. This vehicle is operated five to seven days a week functioning as a typical vehicle in the overall fleet.



Monthly MPG = (miles driven)/(gallons of fuel purchased). Monthly variation in reported MPG may occur due to the difference in fuel tank level at the beginning and end of the month