

# Operating Costs

## 2013 Ford Fusion Energi SE

VIN: 3FA6P0PU1DR297094



### Vehicle Specifications

**Engine:** 2.0 L 16 Valve DOHC

**Electric Motor:** 88 kW

**Battery:** Lithium-ion

**Class:** Midsize Car

**Seatbelt Positions:** Five

**Payload:** 850 lbs

See Vehicle Specifications and Testing Results for more information

### Fleet Performance

#### Operating Cost:

Purchase Cost: \$40,461<sup>1</sup>

Purchase Date: January 2014

Resale Value as of 11/2016: \$5,549<sup>2</sup>

Sale Price: In Operation

Maintenance Cost: \$0.03/mile

Operating Cost: \$0.12/mile<sup>3</sup>

Total Ownership Cost: \$0.41/mile<sup>4</sup>

#### Operating Performance:

Total miles driven: 131,350

Cumulative MPG: 38.3

Cumulative AC Wh/mi: 26.530

#### Major Operations & Maintenance Events:

<sup>1</sup>Purchase includes dealer price with options plus taxes. It does not include title, license, registration, extended warranty or delivery fee costs.

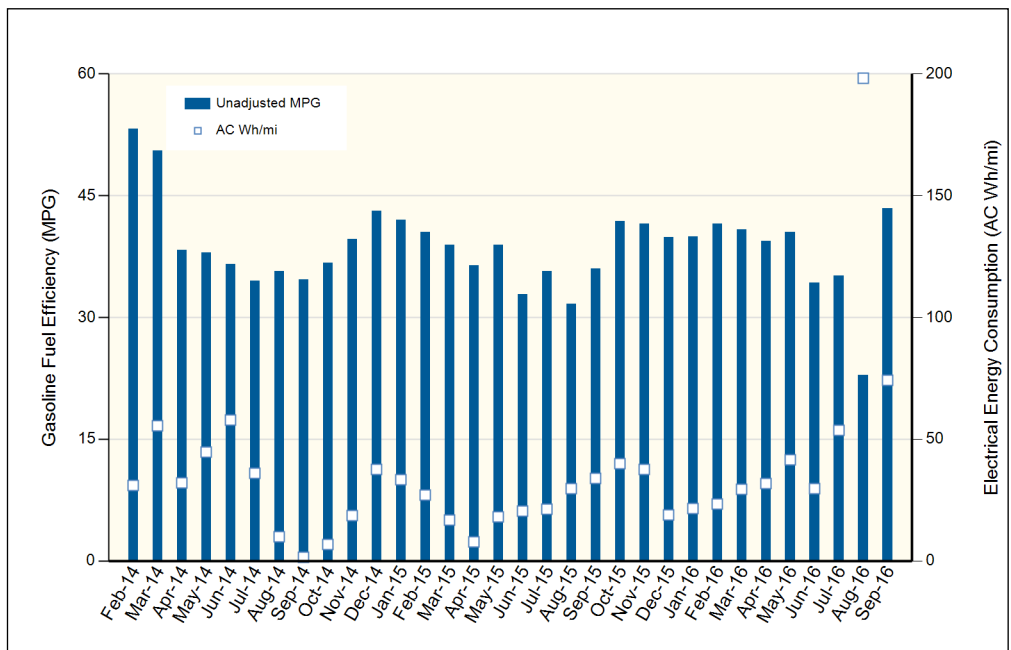
<sup>2</sup>Per Kelley Blue Book private resale estimate, www.kbb.com.

<sup>3</sup>Operating costs includes insurance, fuel, and registration costs

<sup>4</sup>Total ownership includes maintenance, operating, and capital depreciation

### Description of Vehicle Usage:

This vehicle is operated by various commercial vehicle fleets throughout the Southwestern United States covering a mixture of city and highway routes. This vehicle is operated five to seven days a week functioning as a typical vehicle in the overall fleet.



Monthly MPG = (miles driven)/(gallons of fuel purchased). Monthly variation in reported MPG may occur due to the difference in fuel tank level at the beginning and end of the month