

Operating Costs

2013 Ford Fusion Energi SE

VIN: 3FA6P0PU6DR303875



Vehicle Specifications

Engine: 2.0 L 16 Valve DOHC

Electric Motor: 88 kW

Battery: Lithium-ion

Class: Midsize Car

Seatbelt Positions: Five

Payload: 850 lbs

See Vehicle Specifications and Testing Results for more information

Fleet Performance

Operating Cost:

Purchase Cost: \$39,875¹

Purchase Date: January 2014

Resale Value as of 11/2016: \$4,225²

Sale Price: In Operation

Maintenance Cost: \$0.03/mile

Operating Cost: \$0.11/mile³

Total Ownership Cost: \$0.35/mile⁴

Operating Performance:

Total miles driven: 167,317

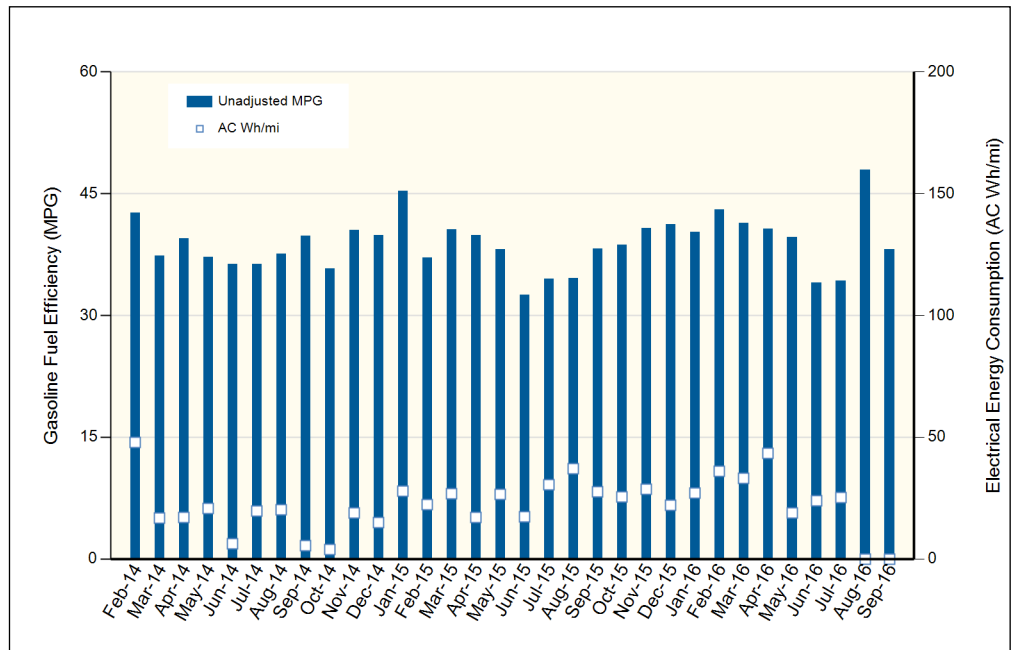
Cumulative MPG: 38.2

Cumulative AC Wh/mi: 19.840

Major Operations & Maintenance Events:

Description of Vehicle Usage:

This vehicle is operated by various commercial vehicle fleets throughout the Southwestern United States covering a mixture of city and highway routes. This vehicle is operated five to seven days a week functioning as a typical vehicle in the overall fleet.



Monthly MPG = (miles driven)/(gallons of fuel purchased). Monthly variation in reported MPG may occur due to the difference in fuel tank level at the beginning and end of the month

¹Purchase includes dealer price with options plus taxes. It does not include title, license, registration, extended warranty or delivery fee costs.

²Per Kelley Blue Book private resale estimate, www.kbb.com.

³Operating costs includes insurance, fuel, and registration costs

⁴Total ownership includes maintenance, operating, and capital depreciation