

Operating Costs

2011 Chevrolet Volt
VIN: 1G1RD6E48BU100815



Vehicle Specifications

- Engine:** 1.4 L, Inline 4-Cylinder
- Electric Motor:** 111 kW
- Battery:** Lithium-ion
- Class:** Compact
- Seatbelt Positions:** Four
- Payload:** 750 lbs

See Vehicle Specifications and Testing Results for more information

Fleet Performance

Operating Cost:

- Purchase Cost: \$52,021¹
- Purchase Date: March 2011
- Resale Value as of 11/2016: \$4,352²
- Sale Price: In Operation
- Maintenance Cost: \$0.04/mile
- Operating Cost: \$0.18/mile³
- Total Ownership Cost: \$0.57/mile⁴

Operating Performance:

- Total miles driven: 133,218
- Cumulative MPG: 36.7
- Cumulative AC Wh/mi: 74.180

Major Operations & Maintenance Events:

Replaced left front wheel speed sensor, hub bearing, and water pump @ 117,232 mi
Cost: \$1,696.99

¹Purchase includes dealer price with options plus taxes. It does not include title, license, registration, extended warranty or delivery fee costs.

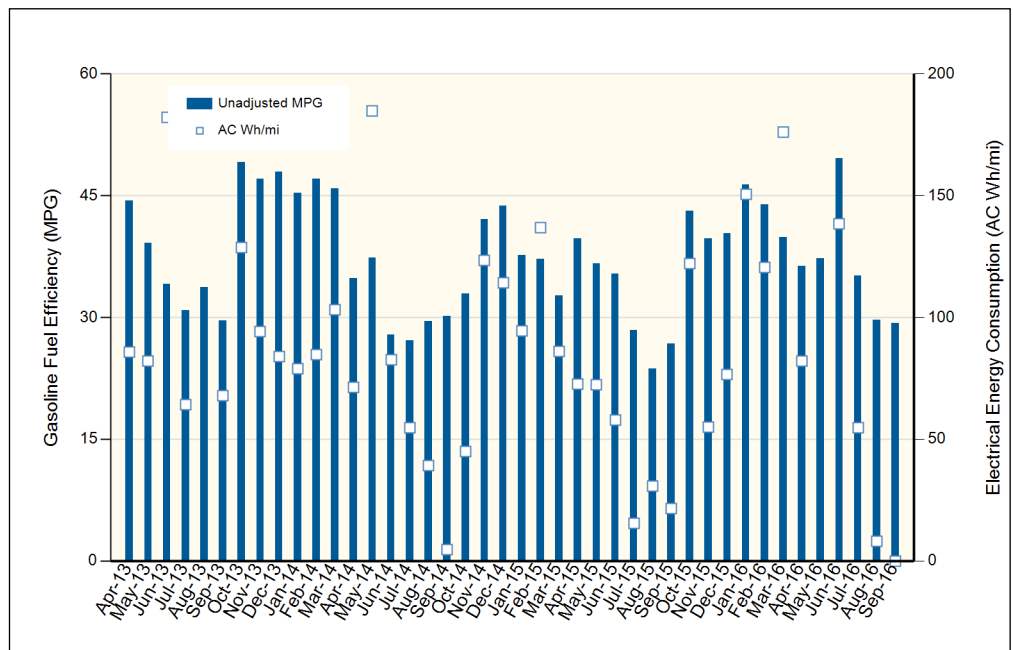
²Per Kelley Blue Book private resale estimate, www.kbb.com.

³Operating costs includes insurance, fuel, and registration costs

⁴Total ownership includes maintenance, operating, and capital depreciation

Description of Vehicle Usage:

This vehicle is operated by various commercial vehicle fleets throughout the Southwestern United States covering a mixture of city and highway routes. This vehicle is operated five to seven days a week functioning as a typical vehicle in the overall fleet.



Monthly MPG = (miles driven)/(gallons of fuel purchased). Monthly variation in reported MPG may occur due to the difference in fuel tank level at the beginning and end of the month