

## SCAQMD Quantum Escape PHEV Report

### All Vehicles

Number of vehicles: 18

Date range of data received:

12/01/2012 to 12/31/2012

Reporting period: December 2012

Number of vehicle days driven: 164

### All Trips Combined

Overall gasoline fuel economy (mpg)	35
Overall AC electrical energy consumption (AC Wh/mi) <sup>1</sup>	36
Overall DC electrical energy consumption (DC Wh/mi) <sup>2</sup>	11
Total number of trips	1,083
Total distance traveled (mi)	12,432

### Trips in Charge Depleting (CD) mode<sup>3</sup>

Gasoline fuel economy (mpg)	38
DC electrical energy consumption (DC Wh/mi) <sup>4</sup>	52
Number of trips	242
Percent of trips city   highway	71%   29%
Distance traveled (mi)	1,643
Percent of total distance traveled	13%

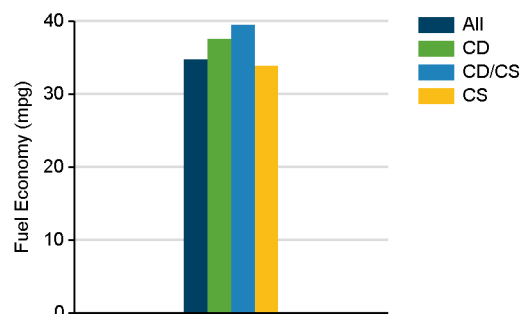
### Trips in both Charge Depleting & Charge Sustaining (CD/CS) modes<sup>5</sup>

Gasoline fuel economy (mpg)	39
DC electrical energy consumption (DC Wh/mi) <sup>6</sup>	53
Number of trips	32
Percent of trips city   highway	31%   69%
Distance traveled (mi)	1,031
Percent of total distance traveled	8%

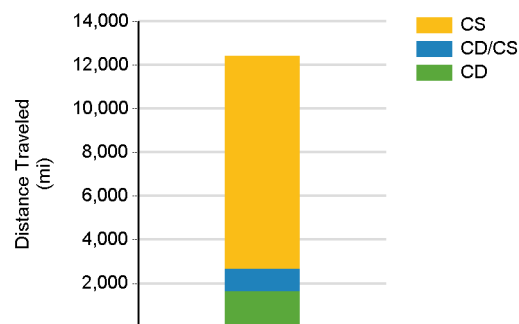
### Trips in Charge Sustaining (CS) mode<sup>7</sup>

Gasoline fuel economy (mpg)	34
Number of trips	809
Percent of trips city   highway	69%   31%
Distance traveled (mi)	9,758
Percent of total distance traveled	78%

Gasoline Fuel Economy By Trip Type



Distance Traveled By Trip Type



Notes: 1 - 8. Please see <http://avt.inl.gov/pdf/phev/SCAQMDreportnotes.pdf> for an explanation of all PHEV Fleet Testing Report notes.

**Trips in Charge Depleting (CD) mode**

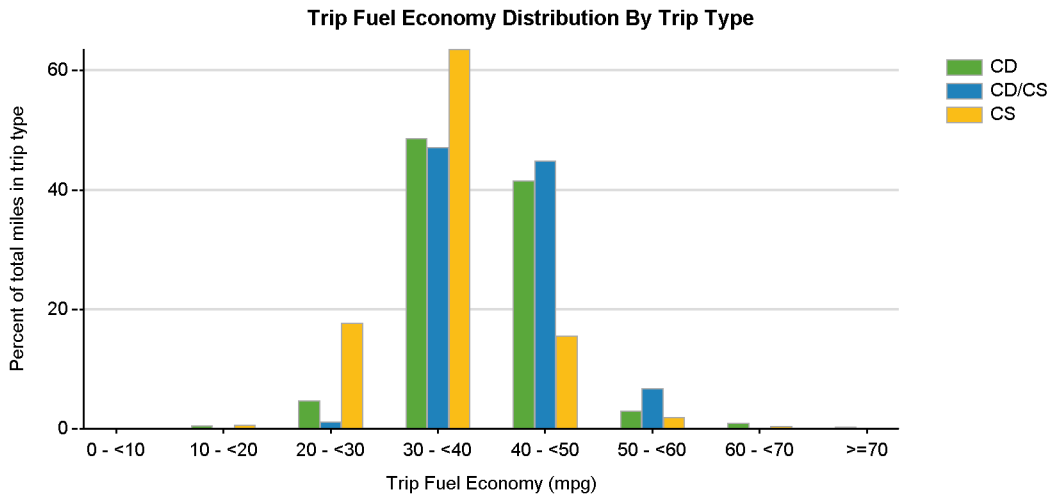
	City	Highway
Gasoline fuel economy (mpg)	35	39
DC electrical energy consumption (DC Wh/mi)	58	48
Percent of miles with internal combustion engine off	1%	1%
Average trip driving intensity <sup>8</sup>	4	3
Average trip distance (mi)	3.9	13.8

**Trips in Charge Depleting and Charge Sustaining (CD/CS) mode**

	City	Highway
Gasoline fuel economy (mpg)	33	40
DC electrical energy consumption (DC Wh/mi)	78	52
Percent of miles with internal combustion engine off	5%	0%
Average trip driving intensity <sup>8</sup>	4	2
Average trip distance (mi)	5.1	44.5

**Trips in Charge Sustaining (CS) mode**

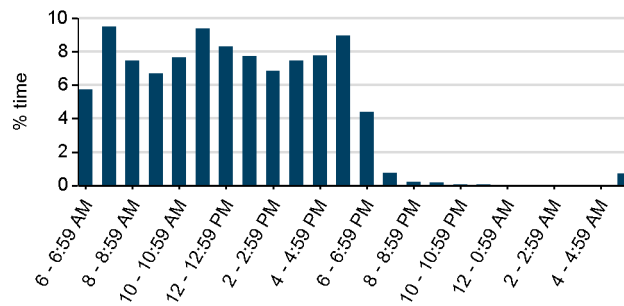
	City	Highway
Gasoline fuel economy (mpg)	31	35
Percent of miles with internal combustion engine off	4%	3%
Average trip driving intensity <sup>8</sup>	4	2
Average trip distance (mi)	3.8	30.1



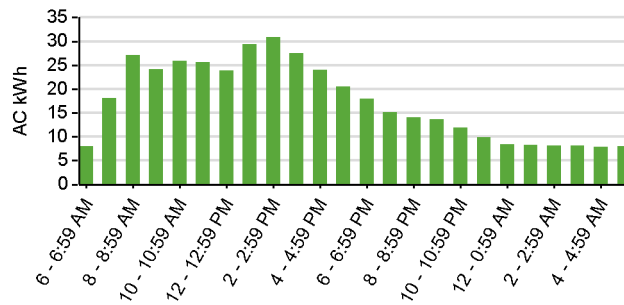
Plug-in charging

Average number of charging events per vehicle per month when driven	5
Average number of charging events per vehicle per day when driven	0.5
Average distance driven between charging events (mi)	142.9
Average number of trips between charging events	12.4
Average time plugged in per charging event (hr)	57.9
Average time plugged in and drawing power (hr)	57.9
Average time charging per charging event (power > 200 w) (hr)	2.4
Average energy per charging event (AC kWh)	5.1
Average charging energy per vehicle per month (AC kWh)	26.2
Total number of charging events	87
Total charging energy (AC kWh)	445

Time of Day When Driving



Time of Day When Charging



Time of Day When Plugging In

