



Vehicle Technologies Program

North American PHEV Demonstration

Fleet Summary Report - Hymotion Prius (V2Green data logger)

Number of vehicles: 107

Reporting Period: July 2009

Date range of data received:

7/1/2009 to 7/31/2009

Number of days the vehicles were driven: 31

All Trips Combined

Overall gasoline fuel economy (mpg)	50
Total number of trips	8731
Total distance traveled (mi)	77160

Trips in Charge Depleting (CD) mode *

Gasoline fuel economy (mpg)	69
Number of trips	3809
Percent of trips city / highway	86.8% / 13.2%
Distance traveled (mi)	16711
Percent of total distance traveled	21.7%

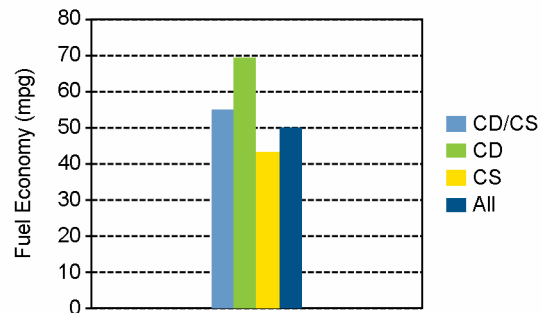
Trips in combined Charge Depleting and Charge Sustaining (CD/CS) modes**

Gasoline fuel economy (mpg)	55
Number of trips	677
Percent of trips city / highway	51.1% / 48.9%
Distance traveled (mi)	17167
Percent of total distance traveled	22.2%

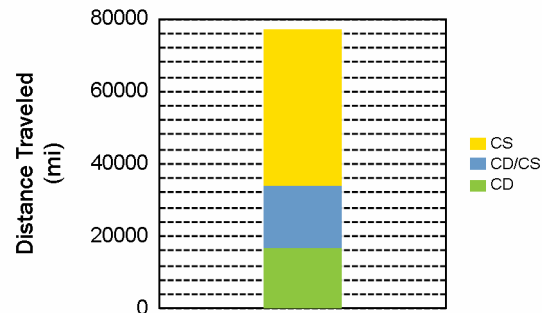
Trips in Charge Sustaining (CS) mode***

Gasoline fuel economy (mpg)	43
Number of trips	4245
Percent of trips city / highway	77.6% / 22.4%
Distance traveled (mi)	43282
Percent of total distance traveled	56.1%

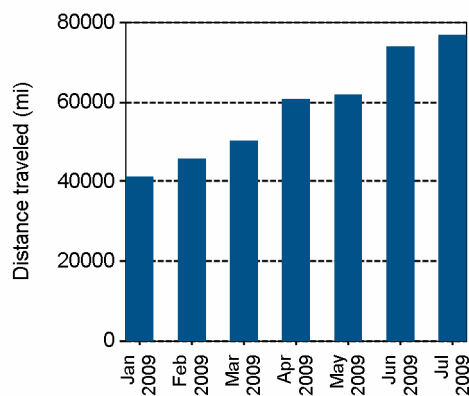
Gasoline Fuel Economy By Trip Type



Distance Traveled By Trip Type



Miles Logged by Month This Year



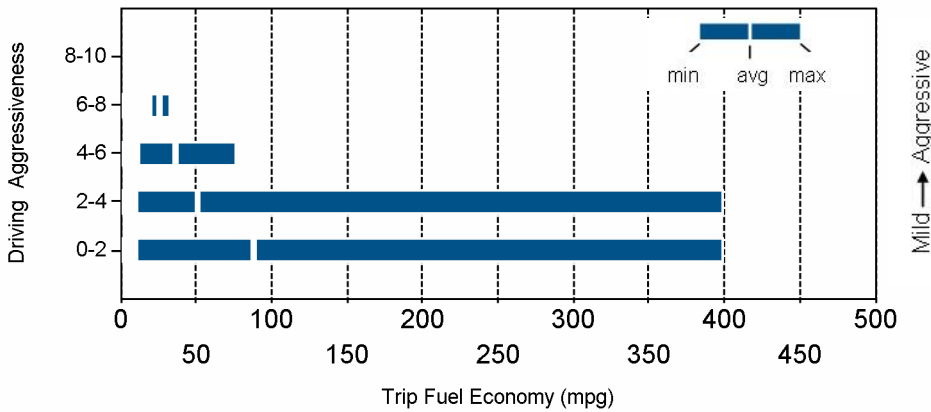
* Trips when the plug-in battery pack charge is depleted to propel the vehicle throughout entire trip

** Trips when the plug-in battery pack is depleted to propel the vehicle for a portion of the trip, but is fully depleted prior to the end of the trip

*** Trips when the plug-in battery pack is not used to propel the vehicle - either the plug-in battery is fully depleted before the beginning of the trip, or the plug-in battery pack is turned off

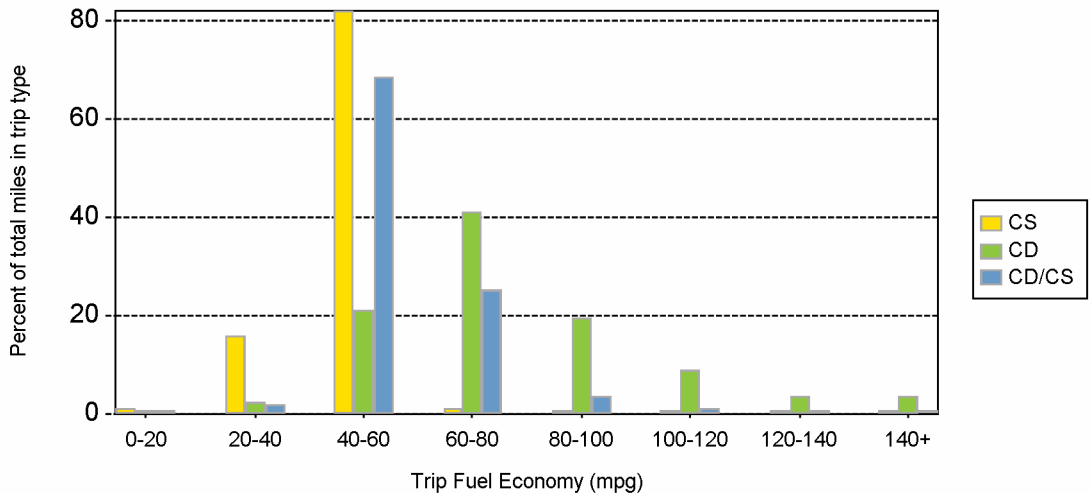
Trips in Charge Depleting (CD) mode		
	City	Highway
Gasoline fuel economy (mpg)	69	70
Percent of miles in electric-only mode	36.0%	10.0%
Average trip aggressiveness (on scale 0 - 10)	1.8	1.7
Average trip distance (mi)	2.8	14.9
Trips in combined Charge Depleting and Charge Sustaining (CD/CS) modes		
Gasoline fuel economy (mpg)	56	55
Percent of miles in electric-only mode	25.0%	5.0%
Average trip aggressiveness (on scale 0 - 10)	1.8	1.6
Average trip distance (mi)	9.7	41.7
Trips in Charge Sustaining (CS) mode		
Gasoline fuel economy (mpg)	37	46
Percent of miles in electric-only mode	23.0%	5.0%
Average trip aggressiveness (on scale 0 - 10)	1.9	1.7
Average trip distance (mi)	3.9	32.1

Effect Of Driving Aggressiveness on Fuel Economy This Year



Aggressiveness factor is based on accelerator pedal position. The more time spent during a trip at higher accelerator pedal position, the higher the trip aggressiveness.

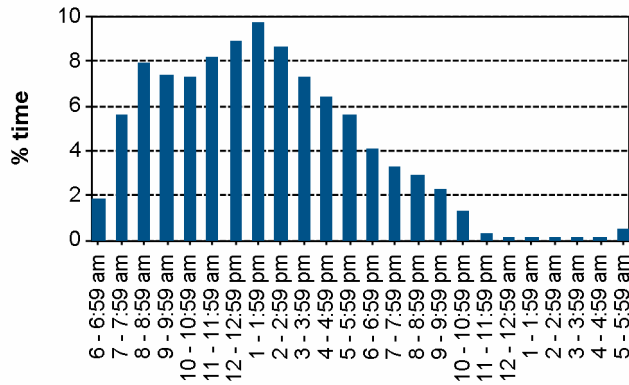
Trip Fuel Economy Distribution By Trip Type



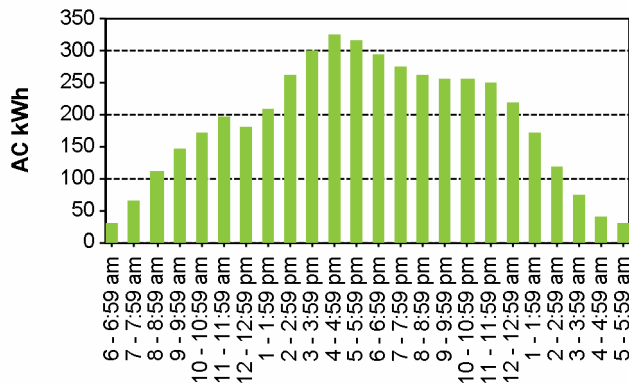
Plug-in charging

Average number of charging events per vehicle per month when driven	17
Average number of charging events per vehicle per day when vehicle driven	1.0
Average distance between charging events	45.2
Average number of trips between charging events	5.1
Average duration of charging event (hr) *	21.0
Average energy per charging event (AC kWh)	2.7
Average charging energy per vehicle per month (AC kWh)	44.2
Total number of charging events	1706
Total charging energy (AC kWh)	4552

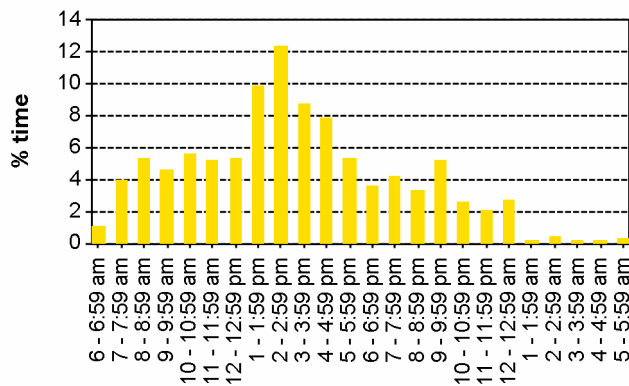
Time of Day When Driving



Time of Day When Charging



Time at the Start of Charging Events



*Average duration of charging event is the average length of time per charging event when the vehicle was plugged into the electrical grid. Electrical energy was not necessarily drawn during the entire period when the vehicle was plugged in.