

## North American PHEV Demonstration

Fleet Summary Report: Hymotion Prius (V2Green data logger)

Number of vehicles: 168

Reporting Period: January 2010

### All Trips Combined

Overall gasoline fuel economy (mpg)	46
Overall AC electrical energy consumption (AC Wh/mi) <sup>1</sup>	54
Overall DC electrical energy consumption (DC Wh/mi) <sup>2</sup>	40
Total number of trips	9,988
Total distance traveled (mi)	93,994
Trips in Charge Depleting (CD) mode <sup>3</sup>	
Gasoline fuel economy (mpg)	55
DC electrical energy consumption (DC Wh/mi) <sup>4</sup>	137
Number of trips	4,148
Percent of trips city / highway	86% / 14%
Distance traveled (mi)	20,011
Percent of total distance traveled	21%
Trips in both Charge Depleting and Charge Sustaining (CD/CS) modes <sup>5</sup>	
Gasoline fuel economy (mpg)	52
DC electrical energy consumption (DC Wh/mi) <sup>6</sup>	49
Number of trips	715
Percent of trips city / highway	45% / 55%
Distance traveled (mi)	19,889
Percent of total distance traveled	21%
Trips in Charge Sustaining (CS) mode <sup>7</sup>	
Gasoline fuel economy (mpg)	42
Number of trips	5,125
Percent of trips city / highway	76% / 24%
Distance traveled (mi)	54,094
Percent of total distance traveled	58%
Number of trips when the plug-in battery pack was turned off by the vehicle operator <sup>8</sup>	476
Distance traveled with plug-in battery pack turned off by the vehicle operator (mi) <sup>9</sup>	5,556

Notes: 1 - 9. Please see <http://avt.inel.gov/phev/reportnotes> for an explanation of all PHEV Fleet Testing Report notes.

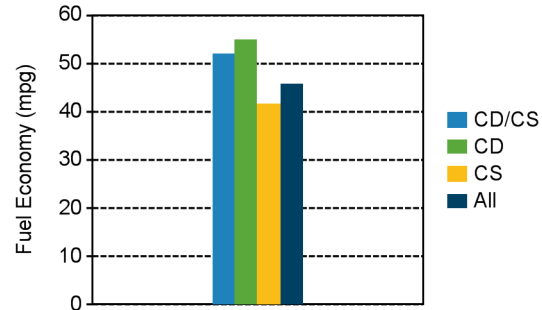
## Vehicle Technologies Program

Date range of data received:

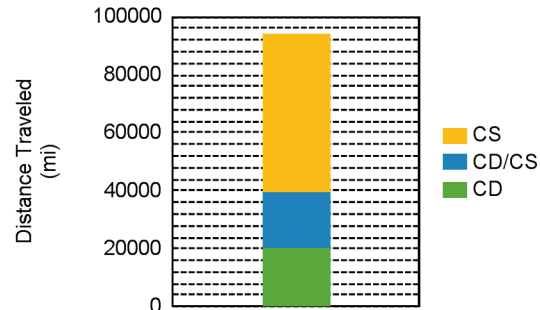
1/1/2010 to 1/31/2010

Number of days the vehicles were driven: 31

### Gasoline Fuel Economy By Trip Type

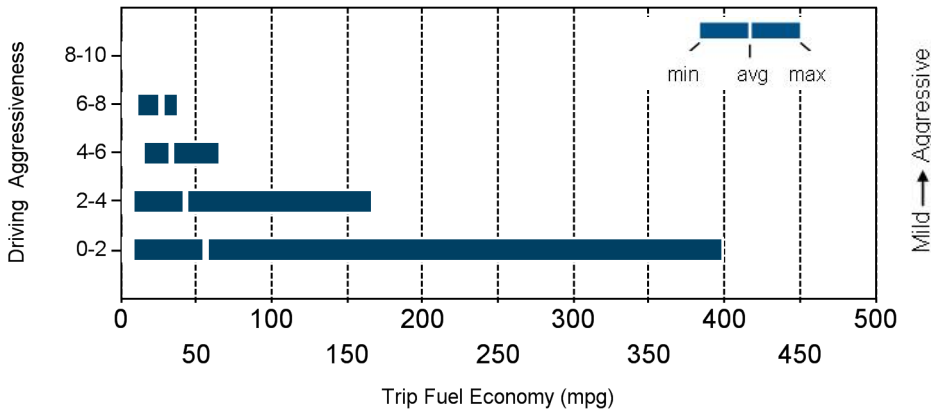


### Distance Traveled By Trip Type



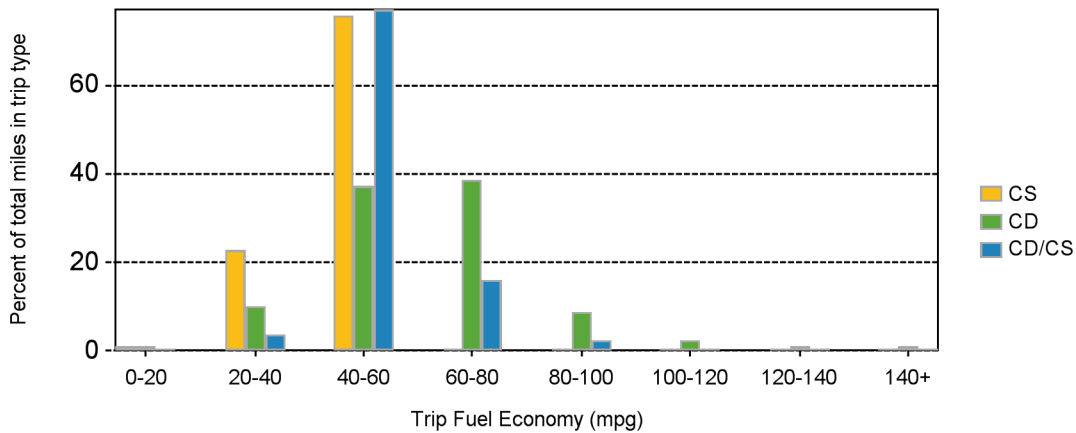
Trips in Charge Depleting (CD) mode		
	City	Highway
Gasoline fuel economy (mpg)	51	61
DC electrical energy consumption (DC Wh/mi)	157	109
Percent of miles with internal combustion engine off	24%	15%
Average trip aggressiveness (on scale 0 - 10)	2.0	1.9
Average trip distance (mi)	3.2	15.1
Trips in both Charge Depleting and Charge Sustaining (CD/CS) modes		
Gasoline fuel economy (mpg)	50	52
DC electrical energy consumption (DC Wh/mi)	69	46
Percent of miles with internal combustion engine off	23%	10%
Average trip aggressiveness (on scale 0 - 10)	1.9	1.6
Average trip distance (mi)	8.8	43.2
Trips in Charge Sustaining (CS) mode		
Gasoline fuel economy (mpg)	34	45
Percent of miles with internal combustion engine off	20%	9%
Average trip aggressiveness (on scale 0 - 10)	1.9	1.8
Average trip distance (mi)	3.4	33.3

### Effect Of Driving Aggressiveness on Fuel Economy This Year



Aggressiveness factor is based on accelerator pedal position. The more time spent during a trip at higher accelerator pedal position, the higher the trip aggressiveness.

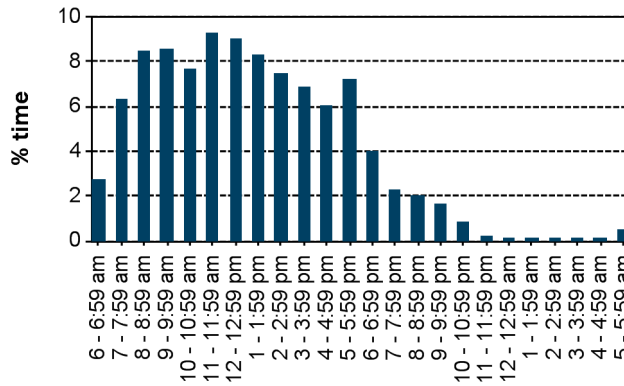
### Trip Fuel Economy Distribution By Trip Type



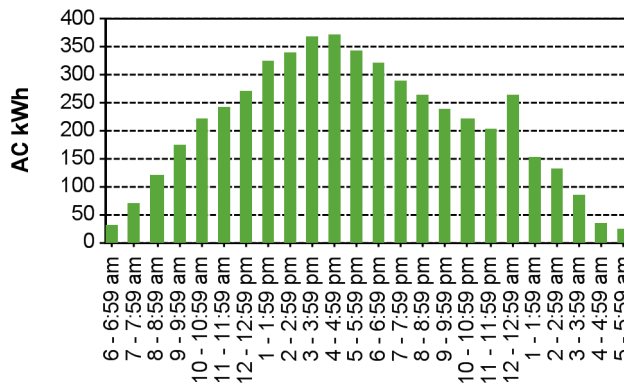
Plug-in charging

Average number of charging events per vehicle per month when driven	11
Average number of charging events per vehicle per day when vehicle driven	0.8
Average distance driven between charging events (mi)	51.5
Average number of trips between charging events	5.5
Average time plugged in per charging event (hr)	24.8
Average time charging per charging event (hr)	2.7
Average energy per charging event (AC kWh)	2.8
Average charging energy per vehicle per month (AC kWh)	31.1
Total number of charging events	1,826
Total charging energy (AC kWh)	5,098

Time of Day When Driving



Time of Day When Charging



Time of Day When Plugging In

