

# Chevrolet Volt Vehicle Demonstration

Fleet Summary Report

Reporting period: October 2011 through December 2011

Number of vehicles: 135

Number of vehicle days driven: 4,746

## All operation

Overall gasoline fuel economy (mpg)	68.6
Overall AC electrical energy consumption (AC Wh/mi)	175
Average Trip Distance	12.2
Total distance traveled (mi)	272,366
Average Ambient Temperature (deg F)	54.1

## Electric Vehicle mode operation (EV)

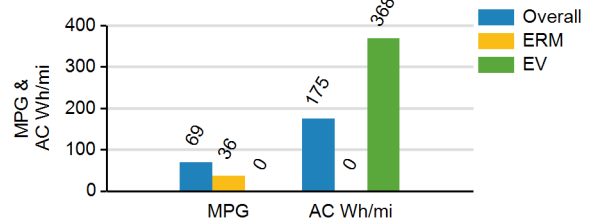
Gasoline fuel economy (mpg)	No Fuel Used
AC electrical energy consumption (AC Wh/mi)	368
Distance traveled (mi)	129,389
Percent of total distance traveled	47.5%
Average driving style efficiency (distance weighted) <sup>1</sup>	75%

## Extended Range mode operation (ERM)

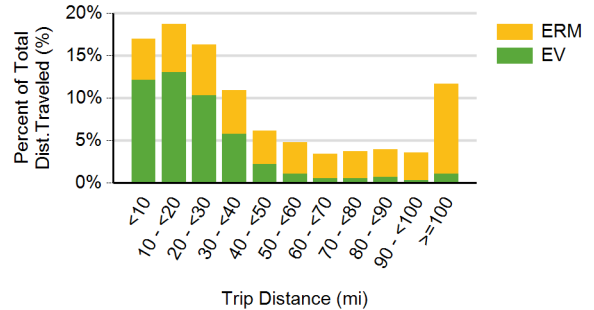
Gasoline fuel economy (mpg)	36.0
AC electrical energy consumption (AC Wh/mi)	No Elec. Used
Distance traveled (mi)	142,977
Percent of total distance traveled	52.4%
Average driving style efficiency (distance weighted) <sup>1</sup>	77%

	City <sup>3</sup>	Highway <sup>3</sup>
Percent of miles in EV operation (%)	65.1%	31.1%
Percent Number of trips	85.5%	14.5%
Average trip distance (mi)	6.9	43.5
Average driving style efficiency (distance weighted) <sup>1</sup>	73%	78%

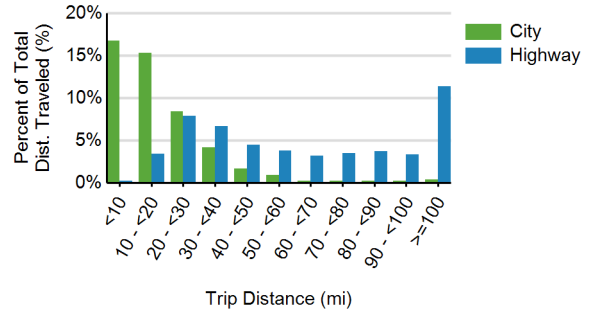
Fuel Economy & Electrical Consumption  
By Operating Mode



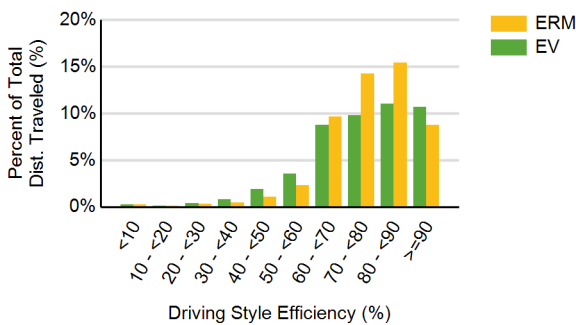
Percent Distance Traveled By  
Operating Mode (EV/ERM)



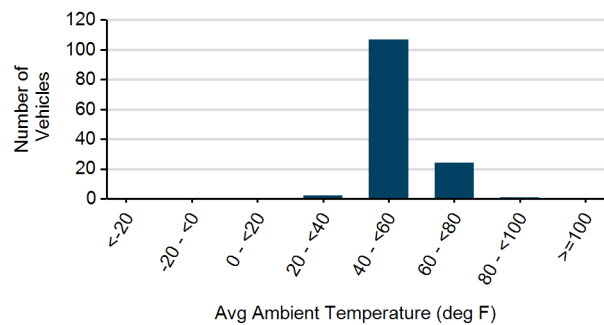
Percent Distance Traveled by  
Route Type (City/Hwy)



Percent Distance Driven for each Driving Style Efficiency



Distribution of Average Ambient Temperature<sup>2</sup>



<sup>1</sup> The energy efficiency over the drive cycle is based on driving style. Driving in a more efficient manner results in a higher percentage for driving style.

<sup>2</sup> Plot shows average ambient temperature during all driving in the reporting period for each vehicle

<sup>3</sup> City / Highway defined per SAE J2841

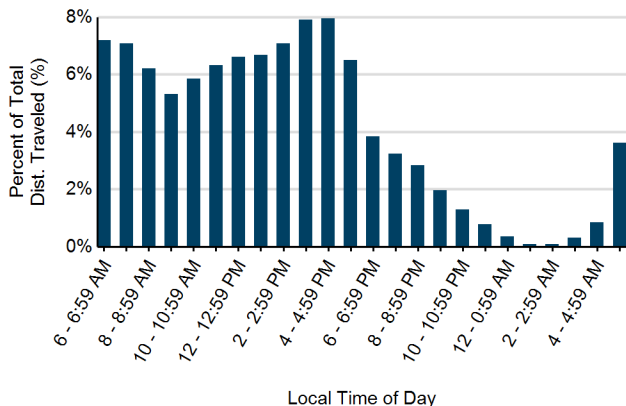
# Chevrolet Volt Vehicle Demonstration (continued)

Reporting period: October 2011 through December 2011

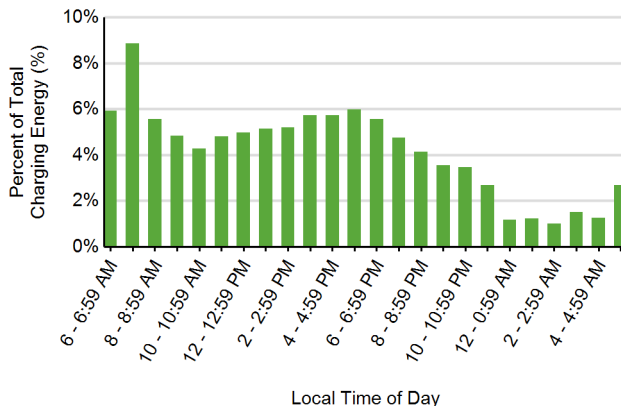
## Charging Information

Average number of charging events per vehicle month*	16
Average number of charging events per vehicle day*	1.2
Average distance between charging events (mi)	43
Average number of trips between charging events	3.5
Average time charging per charging event (hr)	3.4
Average energy per charging event (AC kWh)	7.2
Average charging energy per vehicle month* (AC kWh)	114
Total charging energy (AC kWh)	47,671

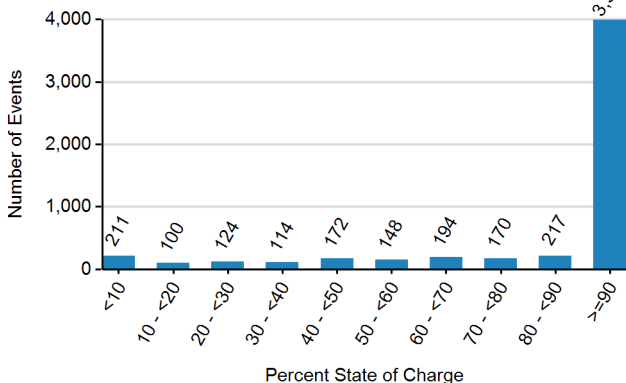
Time of Day When Driving



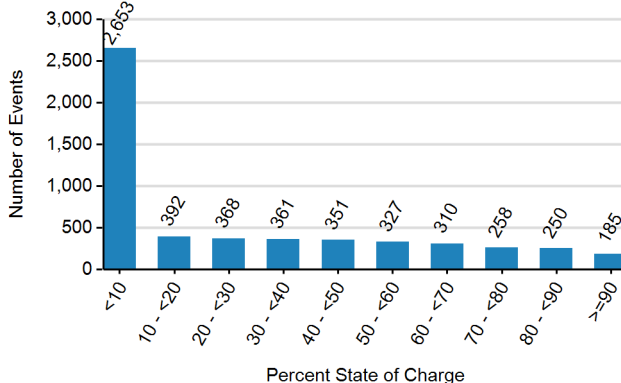
Time of Day When Charging



Battery State of Charge at End of Charging Prior to Driving



Battery State of Charge at End of Drive Prior to Plugging In



\* month or day vehicle is driven