

Chevrolet Volt Vehicle Demonstration

Fleet Summary Report

Reporting period: May 2011 through March 2014

Number of vehicles: 150

Number of vehicle days driven: 66,572

All operation

Overall gasoline fuel economy (mpg)	67.5
Overall AC electrical energy consumption (AC Wh/mi)	167
Average Trip Distance	12.4
Total distance traveled (mi)	3,837,911
Average Ambient Temperature (deg F)	61.4

Electric Vehicle mode operation (EV)

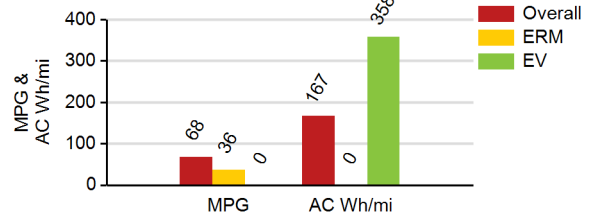
Gasoline fuel economy (mpg)	No Fuel Used
AC electrical energy consumption (AC Wh/mi)	358
Distance traveled (mi)	1,787,554
Percent of total distance traveled	46.6%
Average driving style efficiency (distance weighted) ¹	78%

Extended Range mode operation (ERM)

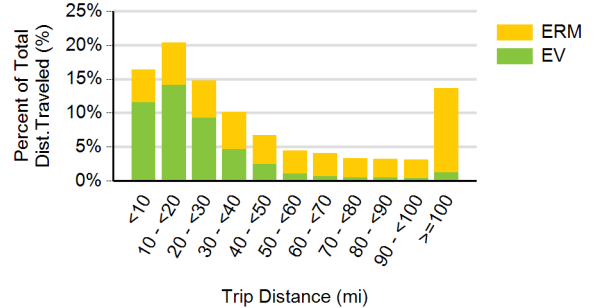
Gasoline fuel economy (mpg)	36.1
AC electrical energy consumption (AC Wh/mi)	No Elec. Used
Distance traveled (mi)	2,050,357
Percent of total distance traveled	53.4%
Average driving style efficiency (distance weighted) ¹	77%

	City ³	Highway ³
Percent of miles in EV operation (%)	63.8%	29.0%
Percent Number of trips	86.0%	14.0%
Average trip distance (mi)	7.2	44.3
Average driving style efficiency (distance weighted) ¹	75%	80%

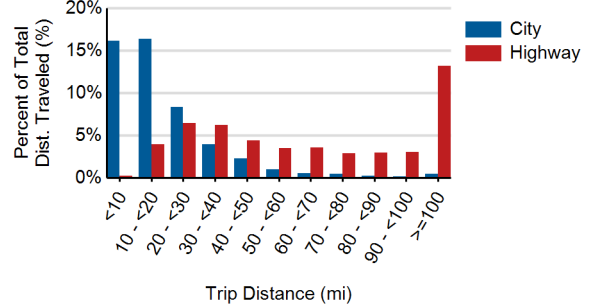
Fuel Economy & Electrical Consumption By Operating Mode



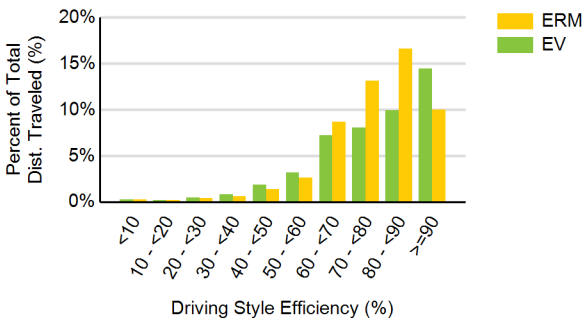
Percent Distance Traveled By Operating Mode (EV/ERM)



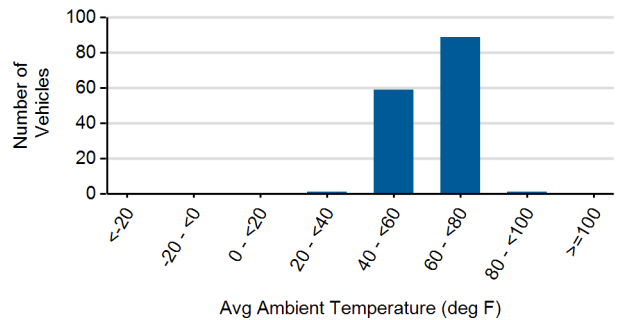
Percent Distance Traveled by Route Type (City/Hwy)



Percent Distance Driven for each Driving Style Efficiency



Distribution of Average Ambient Temperature²



¹ The energy efficiency over the drive cycle is based on driving style. Driving in a more efficient manner results in a higher percentage for driving style.

² Plot shows average ambient temperature during all driving in the reporting period for each vehicle

³ City / Highway defined per SAE J2841

