

Ford Escape Advanced Research Fleet

Number of vehicles: 20

Date range of data received: 01/01/2012 to 11/30/2012

Reporting period: January 12 -
November 12

Number of vehicle days driven: 2,790

All Trips Combined

Overall gasoline fuel economy (mpg)	39
Overall AC electrical energy consumption (AC Wh/mi) ¹	105
Overall DC electrical energy consumption (DC Wh/mi) ²	72
Total number of trips	14,961
Total distance traveled (mi)	168,067

Trips in Charge Depleting (CD) mode³

Gasoline fuel economy (mpg)	51
DC electrical energy consumption (DC Wh/mi) ⁴	157
Number of trips	9,000
Percent of trips city highway	81% 19%
Distance traveled (mi)	55,234
Percent of total distance traveled	33%

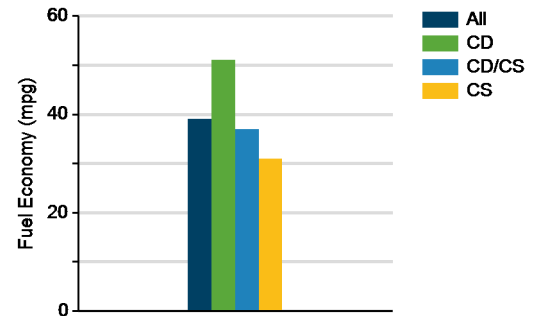
Trips in both Charge Depleting & Charge Sustaining (CD/CS) modes⁵

Gasoline fuel economy (mpg)	37
DC electrical energy consumption (DC Wh/mi) ⁶	55
Number of trips	2,759
Percent of trips city highway	37% 63%
Distance traveled (mi)	69,557
Percent of total distance traveled	41%

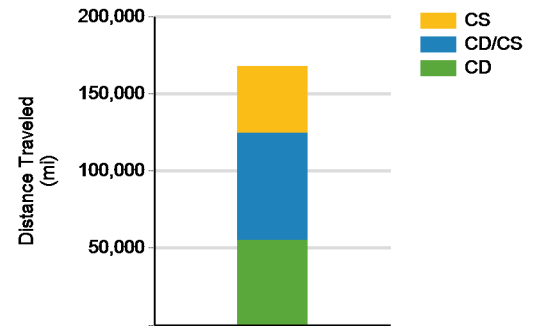
Trips in Charge Sustaining (CS) mode⁷

Gasoline fuel economy (mpg)	31
Number of trips	3,201
Percent of trips city highway	65% 35%
Distance traveled (mi)	43,276
Percent of total distance traveled	26%

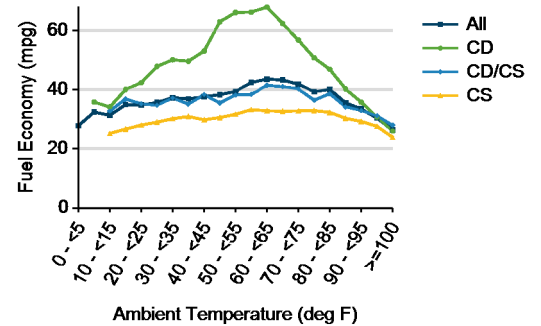
Gasoline Fuel Economy By Trip Type



Distance Traveled By Trip Type



Fuel Economy By Ambient Temperature



Notes: 1 - 7. Please see <http://avt.inl.gov/pdf/phev/fordreportnotes.pdf> for an explanation of all PHEV Fleet Testing Report notes.

Since these vehicles are flex-fuel capable, some driving events are conducted with E-85, which may decrease fuel economy results

"The Ford Escape Advanced Research Fleet was designed as a demonstration of customer duty cycles related to plug-in electric vehicles. The vehicles used in this demonstration have not been optimized to provide the maximum potential fuel economy."

Trips in Charge Depleting (CD) mode

	City	Highway
Gasoline fuel economy (mpg)	44	58
DC electrical energy consumption (DC Wh/mi)	144	167
Percent of miles with internal combustion engine off	31%	10%
Average trip driving intensity (Wh/mi)	288	324
Average trip distance (mi)	3	17

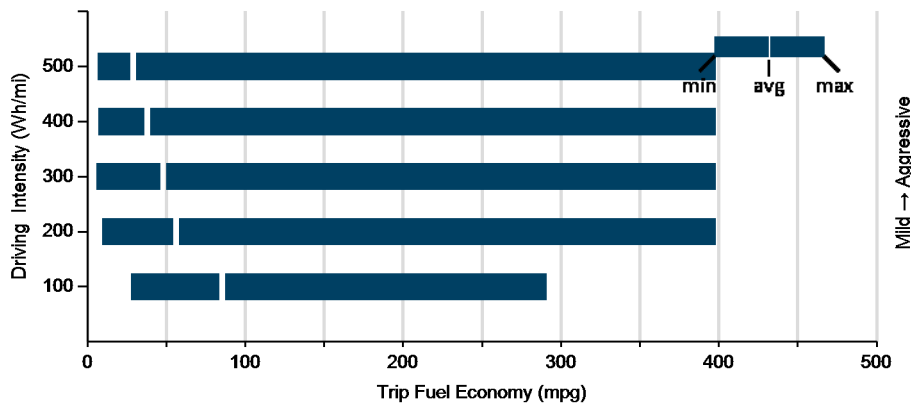
Trips in Charge Depleting and Charge Sustaining (CD/CS) mode

Gasoline fuel economy (mpg)	42	37
DC electrical energy consumption (DC Wh/mi)	73	53
Percent of miles with internal combustion engine off	28%	6%
Average trip driving intensity (Wh/mi)	289	342
Average trip distance (mi)	9	35

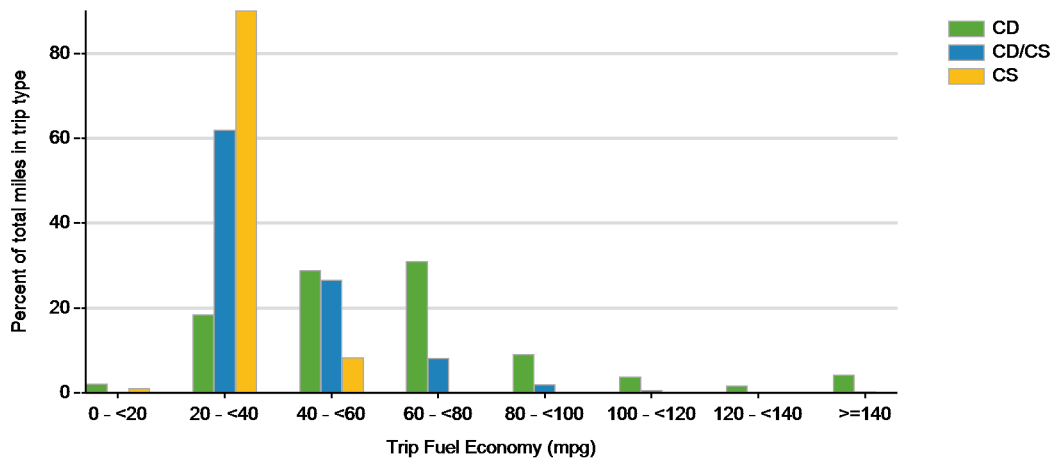
Trips in Charge Sustaining (CS) mode

Gasoline fuel economy (mpg)	30	31
Percent of miles with internal combustion engine off	24%	4%
Average trip driving intensity (Wh/mi)	285	338
Average trip distance (mi)	3	33

Effect Of Driving Intensity (Wheel Energy) on Fuel Economy This Month



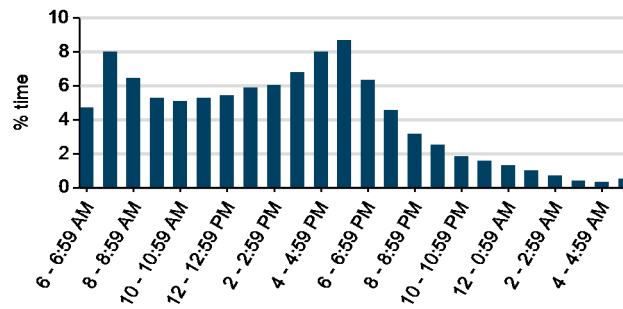
Trip Fuel Economy Distribution By Trip Type



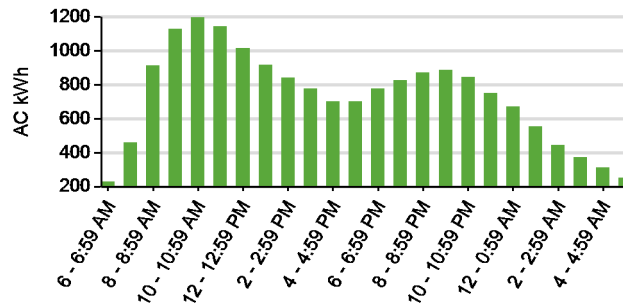
Plug-in charging

Average number of charging events per vehicle per month when driven	31
Average number of charging events per vehicle per day when driven	2.1
Average distance driven between charging events (mi)	28.6
Average number of trips between charging events	2.5
Average time plugged in per charging event (hr)	6.3
Average time charging per charging event (hr)	2.2
Average energy per charging event (AC kWh)	3.0
Average charging energy per vehicle per month (AC kWh)	93.1
Total number of charging events	5,886
Total charging energy (AC kWh)	17,691

Time of Day When Driving



Time of Day When Charging



Time of Day When Plugging In

