

Ford Escape Advanced Research Fleet

Number of vehicles: 21

Date range of data received: 02/01/2010 to 02/28/2010

Reporting period: February 2010

Number of vehicle days driven: 248

All Trips Combined

Overall gasoline fuel economy (mpg)	37
Overall AC electrical energy consumption (AC Wh/mi) ¹	112
Overall DC electrical energy consumption (DC Wh/mi) ²	72
Total number of trips	973
Total distance traveled (mi)	12,099

Trips in Charge Depleting (CD) mode³

Gasoline fuel economy (mpg)	46
DC electrical energy consumption (DC Wh/mi) ⁴	174
Number of trips	555
Percent of trips city highway	85% 16%
Distance traveled (mi)	3,016
Percent of total distance traveled	25%

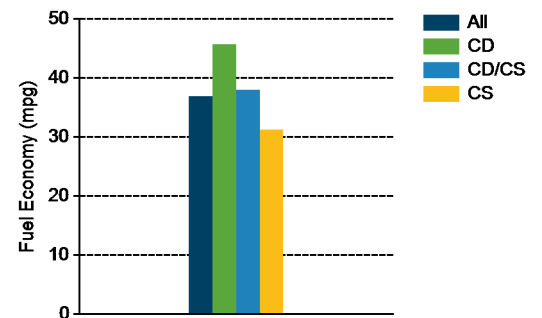
Trips in both Charge Depleting & Charge Sustaining (CD/CS) modes⁵

Gasoline fuel economy (mpg)	38
DC electrical energy consumption (DC Wh/mi) ⁶	69
Number of trips	162
Percent of trips city highway	41% 59%
Distance traveled (mi)	5,051
Percent of total distance traveled	42%

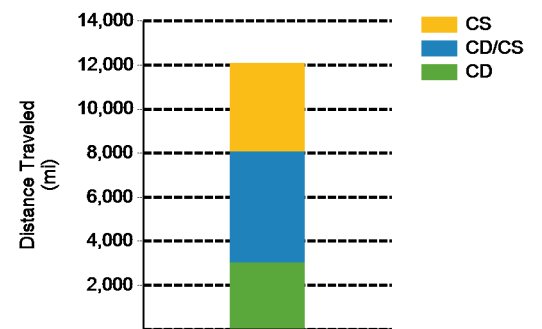
Trips in Charge Sustaining (CS) mode⁷

Gasoline fuel economy (mpg)	31
Number of trips	256
Percent of trips city highway	65% 35%
Distance traveled (mi)	4,032
Percent of total distance traveled	33%

Gasoline Fuel Economy By Trip Type



Distance Traveled By Trip Type



Notes: 1 - 7. Please see <http://avt.inl.gov/pdf/phev/fordreportnotes.pdf> for an explanation of all PHEV Fleet Testing Report notes.

Since these vehicles are flex-fuel capable, some driving events are conducted with E-85, which may decrease fuel economy results

"The Ford Escape Advanced Research Fleet was designed as a demonstration of customer duty cycles related to plug-in electric vehicles. The vehicles used in this demonstration have not been optimized to provide the maximum potential fuel economy."

Trips in Charge Depleting (CD) mode

	City	Highway
Gasoline fuel economy (mpg)	41	58
DC electrical energy consumption (DC Wh/mi)	175	174
Percent of miles with internal combustion engine off	32%	13%
Average trip driving intensity (Wh/mi)	252	293
Average trip distance (mi)	4	15

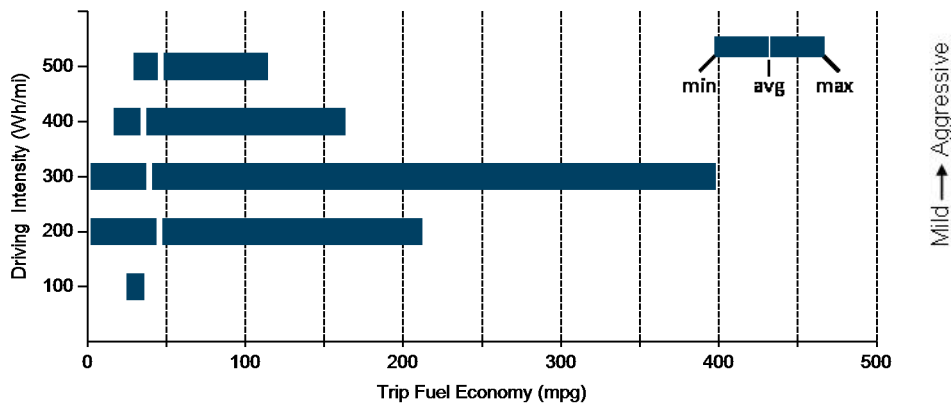
Trips in Charge Depleting and Charge Sustaining (CD/CS) mode

Gasoline fuel economy (mpg)	44	37
DC electrical energy consumption (DC Wh/mi)	112	63
Percent of miles with internal combustion engine off	26%	5%
Average trip driving intensity (Wh/mi)	272	315
Average trip distance (mi)	10	46

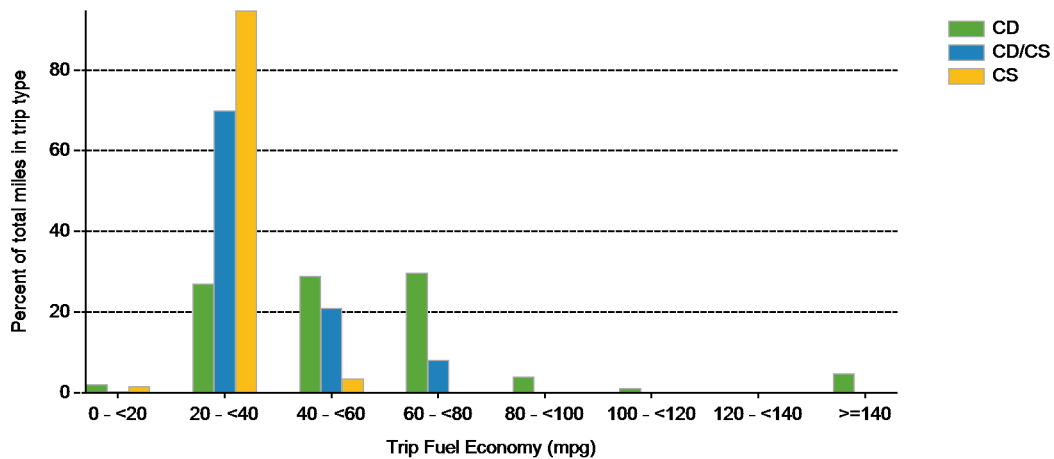
Trips in Charge Sustaining (CS) mode

Gasoline fuel economy (mpg)	29	32
Percent of miles with internal combustion engine off	25%	5%
Average trip driving intensity (Wh/mi)	252	298
Average trip distance (mi)	4	38

Effect Of Driving Intensity (Wheel Energy) on Fuel Economy This Month



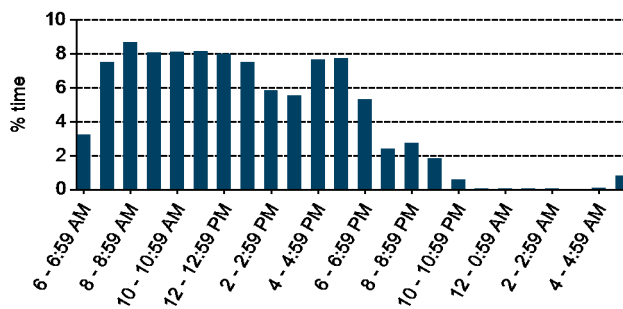
Trip Fuel Economy Distribution By Trip Type



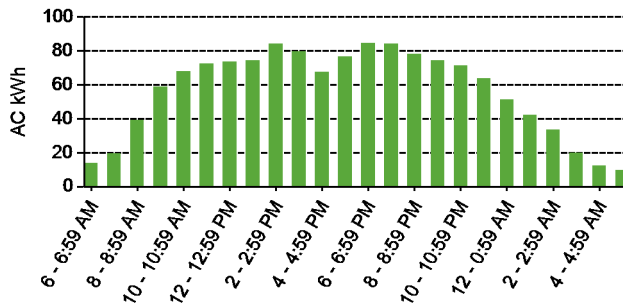
Plug-in charging

Average number of charging events per vehicle per month when driven	39
Average number of charging events per vehicle per day when driven	3.3
Average distance driven between charging events (mi)	14.9
Average number of trips between charging events	1.2
Average time plugged in per charging event (hr)	5.9
Average time charging per charging event (hr)	1.1
Average energy per charging event (AC kWh)	1.7
Average charging energy per vehicle per month (AC kWh)	64.4
Total number of charging events	813
Total charging energy (AC kWh)	1,352

Time of Day When Driving



Time of Day When Charging



Time of Day When Plugging In

