

## Ford C-Max Energi Fleet

Number of vehicles: 2

Date range of data received: 07/01/2013 to 12/12/2013

Reporting period: July 2013 through December 2013

Number of vehicle days driven: 150

### All Trips Combined<sup>1</sup>

Overall gasoline fuel economy (mpg)	40.9
DC electrical energy consumption (DC Wh/mi) <sup>2</sup>	30.3
Total number of trips	631
Total distance traveled (mi)	20,005.0
Distance traveled with internal combustion engine off (mi)	7,441.5
Average ambient temperature over reporting period (deg F)	66.1

### Trips in Charge Depleting (CD) mode<sup>3</sup>

Gasoline fuel economy (mpg)	58.5
DC electrical energy consumption (DC Wh/mi) <sup>4</sup>	146.5
Number of trips	170
Percent of trips city   highway	51%   49%
Distance traveled (mi)	3,852.7
Percent of total distance traveled	19.3%
Distance traveled with internal combustion engine off (mi)	2,004.7
Number of All-Electric trips (consumed No Fuel)	47
Distance traveled for All-Electric trips (consumed No Fuel) (mi)	137.2
DC electrical energy consumption for All-Electric trips (DC Wh/mi)	363.0

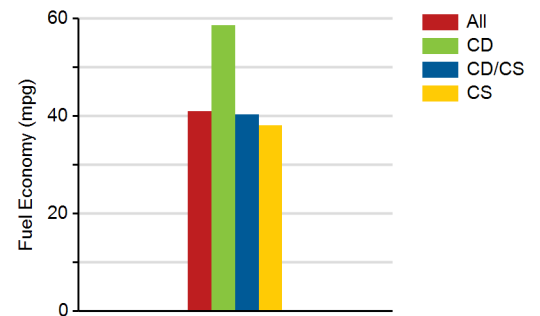
### Trips in both Charge Depleting & Charge Sustaining (CD/CS) modes<sup>5</sup>

Gasoline fuel economy (mpg)	40.3
DC electrical energy consumption (DC Wh/mi) <sup>6</sup>	31.3
Number of trips	24
Percent of trips city   highway	71%   29%
Distance traveled (mi)	1,313.6
Percent of total distance traveled	6.6%
Distance traveled with internal combustion engine off (mi)	442.1

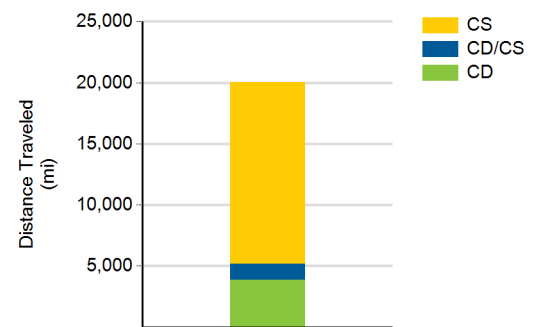
### Trips in Charge Sustaining (CS) mode<sup>7</sup>

Gasoline fuel economy (mpg)	38.0
DC electrical energy consumption (DC Wh/mi)	0
Number of trips	437
Percent of trips city   highway	57%   43%
Distance traveled (mi)	14,838.8
Percent of total distance traveled	74.2%
Distance traveled with internal combustion engine off (mi)	4,994.7

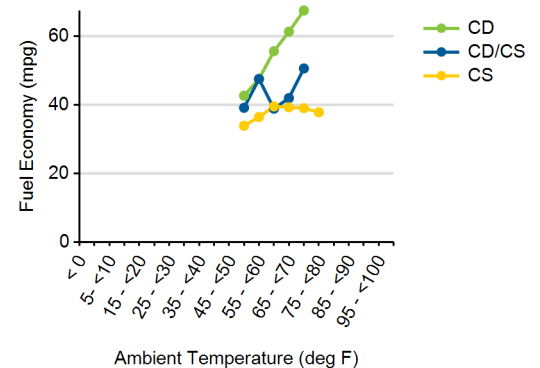
Gasoline Fuel Economy By Trip Type



Distance Traveled By Trip Type



Fuel Economy By Ambient Temperature



- Recorded results vary for many reasons, including driving conditions, drive quality and the vehicle maintenance.
- "Overall DC electrical energy consumption (DC Wh/mi)" is based on net DC electricity discharged from or charged to the plug-in battery pack and distance driven during all trips in the reporting period.
- Trips when the plug-in battery pack was depleted to propel the vehicle throughout entire trip. NOTE: Normal operation of the Blended Architecture in Ford C Max Energi permits the use of the ICE in CD mode.
- Based on the net DC electricity discharged from the plug-in battery pack and the distance driven during charge depleting (CD) trips in the reporting period.
- Trips when the plug-in battery pack was depleted to propel the vehicle for a portion of the trip, but was fully depleted, and the vehicle operated as a conventional HEV for the remainder of the trip.
- Based on the net DC electricity discharged from the plug-in battery pack and all distance driven during trips in both charge depleting and charge sustaining (CD/CS) modes in the reporting period.
- Trips when the vehicle operated as a conventional HEV.



**Trips in Charge Depleting (CD) mode**

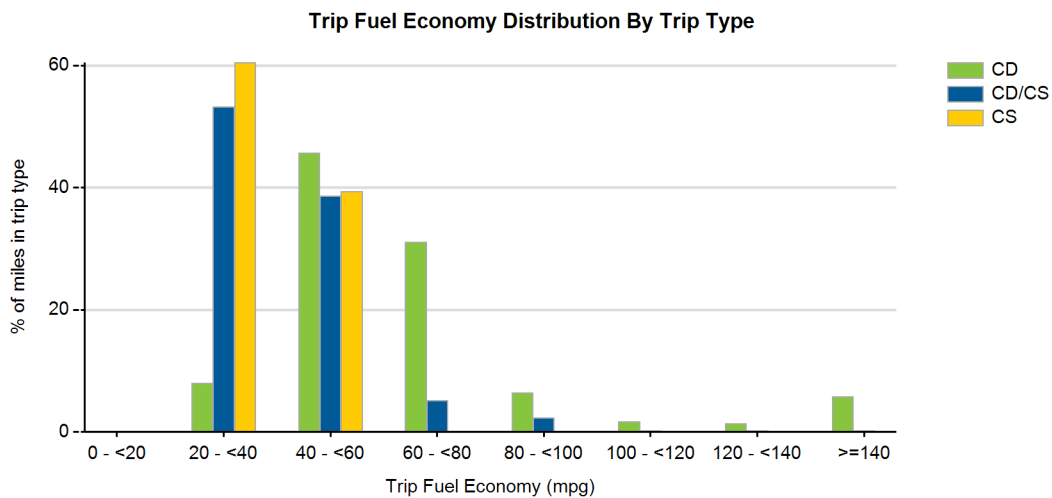
	City <sup>8</sup>	Highway <sup>9</sup>
Gasoline fuel economy (mpg)	73	55
DC electrical energy consumption (DC Wh/mi)	176	137
Percent of miles with internal combustion engine off	64%	48%
Average trip distance (mi)	11.0	34.6
Average All-Electric trip distance (mi)	2.9	0.0

**Trips in Charge Depleting and Charge Sustaining (CD/CS) mode**

	City <sup>8</sup>	Highway <sup>9</sup>
Gasoline fuel economy (mpg)	51	39
DC electrical energy consumption (DC Wh/mi)	87	20
Percent of miles with internal combustion engine off	55%	30%
Average trip distance (mi)	12.8	156.6

**Trips in Charge Sustaining (CS) mode**

	City <sup>8</sup>	Highway <sup>9</sup>
Gasoline fuel economy (mpg)	40	37
DC electrical energy consumption (DC Wh/mi)	0	0
Percent of miles with internal combustion engine off	41%	30%
Average trip distance (mi)	19.5	53.1



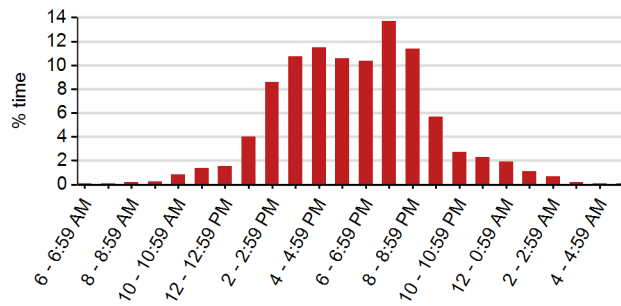
8. City trips are trips with average driving speed < 42 mph.  
 9. Highway trips are trips with average driving speed ≥ 42 mph.



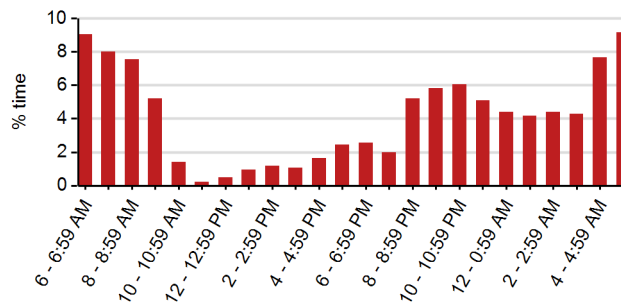
Plug-in charging

Average number of charging events per vehicle per month when driven	11.8
Average number of charging events per vehicle per day when driven	0.9
Average distance driven between charging events (mi)	140.9
Average time plugged in per charging event (hr)	44.1
Average time charging per charging event (hr)	3.8
Total number of charging events	142
Number of charge events ending with Full ESS (>98% SOC)	117

Time of Day When Driving



Time of Day When Charging



Time of Day When Plugging In

