

MHV Fleet Testing - Summary Fact Sheet



Advanced Vehicle Testing Activity

2010 Smart fortwo

VIN# WME4513341K406659

Vehicle Specifications

- Engine:** 1.0 L I-3
- Battery:** 60 Ah, 680 A EN, VRLA
- Seatbelt Positions:** Two
- Payload:** 507 lbs
- Features:**
 - Integrated stop-start
 - Brake energy recuperation

Fleet Performance

Operating Cost:

- Purchase Cost: \$13,917 (9/10)*
- Kelley Blue Book: Not Available
- Sale Price: N/A***
- Maintenance Cost: \$0.04/mile
- Operating Cost: \$0.17/mile**
- Total Ownership Cost: ***

Description:

This vehicle is operated throughout the valley of Phoenix, Arizona by EZ Messenger, a legal document courier business. It is operated five days a week, transferring documents between courts, law offices, and medical facilities on city streets and urban freeways.

See HEVAmerica Baseline Performance Fact Sheet for more information

Operating Performance:

- Total miles driven: 49,578
- Cumulative MPG: 36.8

Major Operations & Maintenance

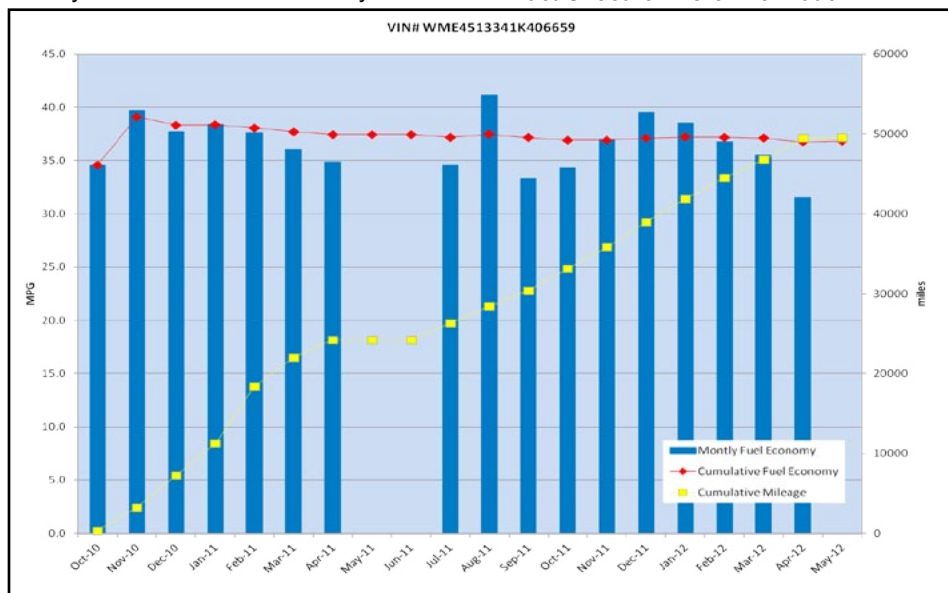
Events:

7/11 Replaced head gasket @ 24,288 mi
Cost: \$786.21

*Purchase includes dealer price with options plus taxes. It does not include title, license, registration, extended warranty or delivery fee costs.

**Operating costs includes insurance, fuel, and registration costs

***This vehicle is not available for normal purchase in the United States so no ownership costs can be calculated



Monthly MPG = (miles driven)/(gallons of fuel purchased). Monthly variation in reported MPG may occur due to the difference in fuel tank level at the beginning and end of the month.