

MHV Fleet Testing - Summary Fact Sheet



Advanced Vehicle Testing Activity

2010 Mazda3

VIN# JMZBLA4G601111865

Vehicle Specifications

Engine: 2.0 L I-4

Battery: Main 36 Ah

Sub 21 Ah, Flooded

Seatbelt Positions: Five

Payload: 1,210 lbs

Features:

Integrated stop-start

Brake energy recuperation

See HEVAmerica Baseline Performance Fact Sheet for more information

Fleet Performance

Operating Cost:

Purchase Cost: \$27,918 (9/10)*

Kelley Blue Book: Not Available

Sale Price: N/A***

Maintenance Cost: \$0.03/mile

Operating Cost: \$0.19

Total Ownership Cost: ***

Description:

This vehicle is operated throughout the valley of Phoenix, Arizona by EZ Messenger, a legal document courier business. It is operated five days a week, transferring documents between courts, law offices, and medical facilities on city streets and urban freeways.

Operating Performance:

Total miles driven: 122,269

Cumulative MPG: 28.8

Major Operations & Maintenance

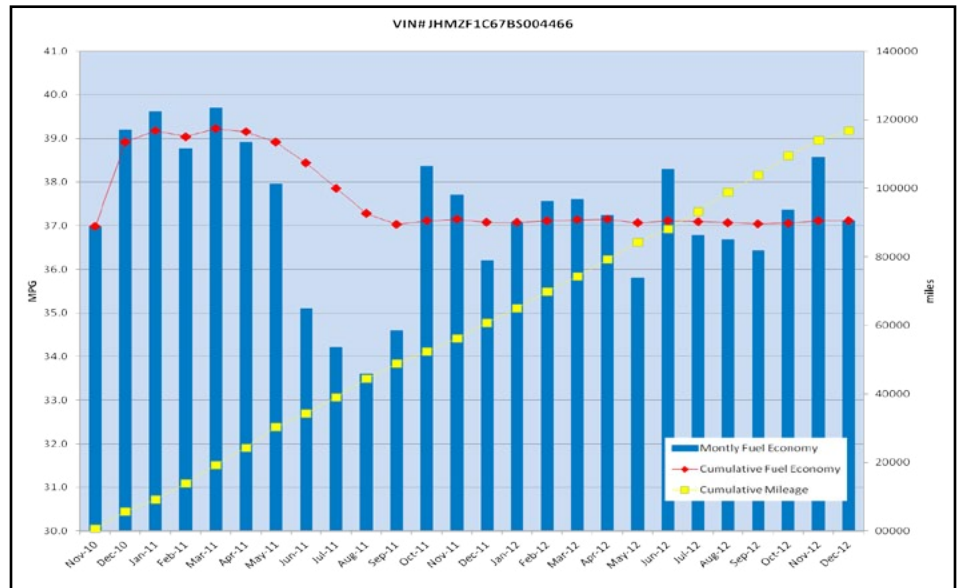
Events:

None

**Purchase includes dealer price with options plus taxes. It does not include title, license, registration, extended warranty or delivery fee costs.*

***Operating costs includes insurance, fuel, and registration costs*

****This vehicle is not available for normal purchase in the United States so no ownership costs can be calculated*



Monthly MPG = (miles driven)/(gallons of fuel purchased). Monthly variation in reported MPG may occur due to the difference in fuel tank level at the beginning and end of the month.