

Operating Costs

2014 Mazda Mazda3 Grand Touring VIN: JM1BM1W3XE1177631



Vehicle Specifications

- Engine:** 2.5 L, dual overhead cam, inline 4-cylinder with variable valve timing
- Electric Motor:** n/a
- Battery:** n/a
- Class:** Compact
- Seatbelt Positions:** Five
- Payload:** 840 lbs

See Vehicle Specifications and Testing Results for more information

Fleet Performance

Operating Cost:

- Purchase Cost: \$30,594¹
- Purchase Date: September 2014
- Resale Value as of 11/2016: \$9,046²
- Sale Price: In Operation
- Maintenance Cost: \$0.03/mile
- Operating Cost: \$0.11/mile³
- Total Ownership Cost: \$0.35/mile⁴

Operating Performance:

- Total miles driven: 102,433
- Cumulative MPG: 32.9

Major Operations & Maintenance Events:

¹Purchase includes dealer price with options plus taxes. It does not include title, license, registration, extended warranty or delivery fee costs.

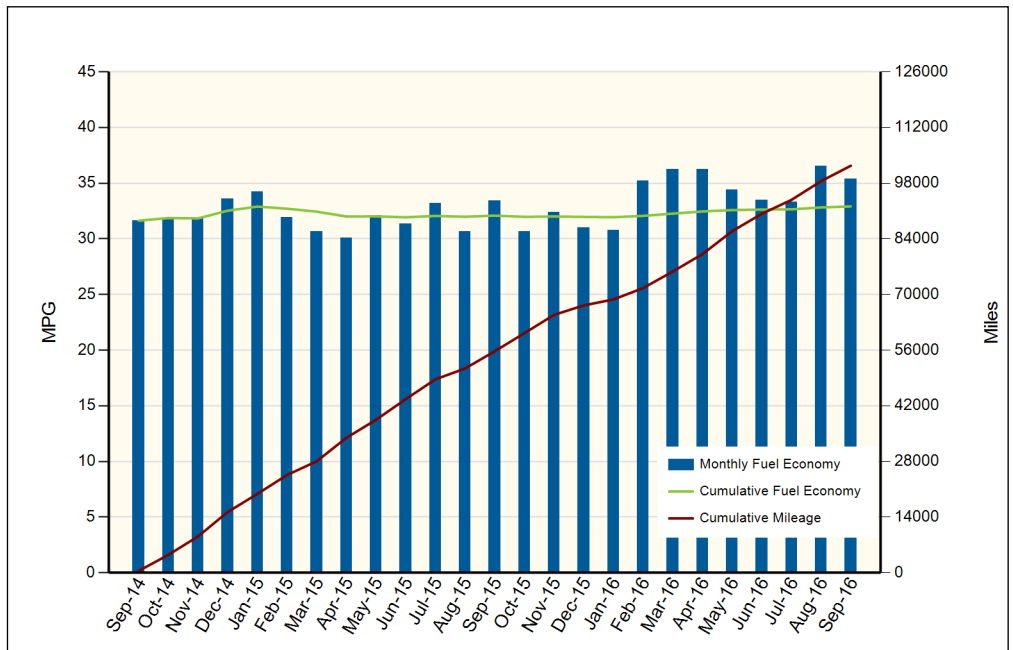
²Per Kelley Blue Book private resale estimate, www.kbb.com.

³Operating costs includes insurance, fuel, and registration costs

⁴Total ownership includes maintenance, operating, and capital depreciation

Description of Vehicle Usage:

This vehicle is operated by various commercial vehicle fleets throughout the Southwestern United States covering a mixture of city and highway routes. This vehicle is operated five to seven days a week functioning as a typical vehicle in the overall fleet.



Monthly MPG = (miles driven)/(gallons of fuel purchased). Monthly variation in reported MPG may occur due to the difference in fuel tank level at the beginning and end of the month