

Operating Costs

2014 Mazda Mazda3 Grand Touring

VIN: JM1BM1W3XE1131135



Vehicle Specifications

Engine: 2.5 L, dual overhead cam, inline 4-cylinder with variable valve timing

Electric Motor: n/a

Battery: n/a

Class: Compact

Seatbelt Positions: Five

Payload: 840 lbs

See Baseline Performance Fact Sheet for more information

Fleet Performance

Operating Cost:

Purchase Cost: \$30,802¹

Purchase Date: September 2014

Resale Value as of : \$0²

Sale Price: \$27,108

Maintenance Cost: \$0.01/mile

Operating Cost: \$0.14/mile³

Total Ownership Cost: \$2.79/mile⁴

Operating Performance:

Total miles driven: 21,868

Cumulative MPG: 31.5

Major Operations & Maintenance Events:

Vehicle was Totaled

¹Purchase includes dealer price with options plus taxes. It does not include title, license, registration, extended warranty or delivery fee costs.

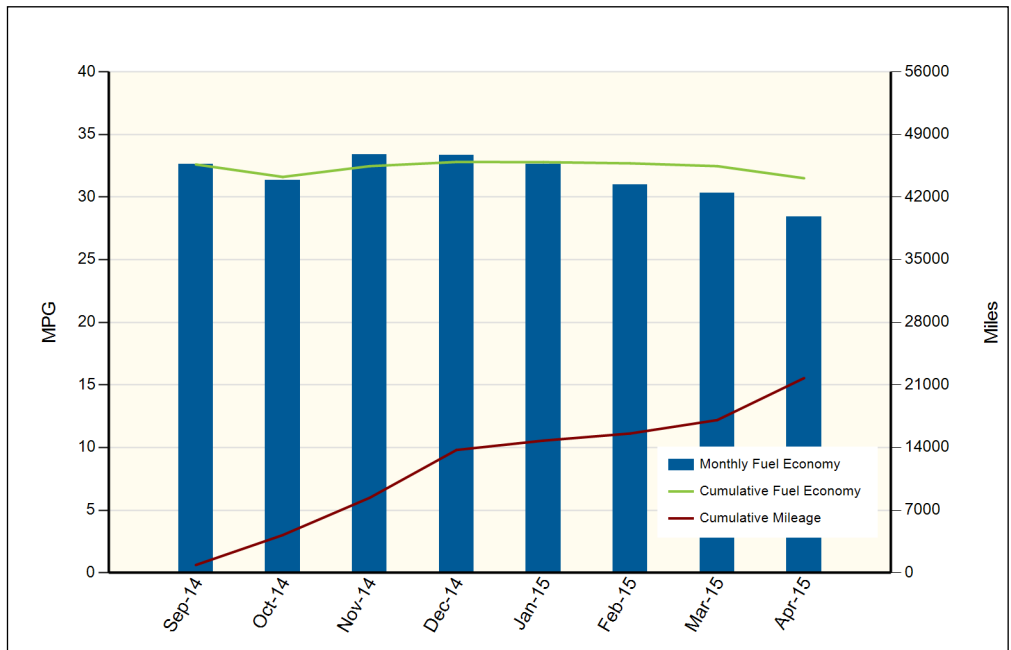
²Per Kelley Blue Book private resale estimate, www.kbb.com.

³Operating costs includes insurance, fuel, and registration costs

⁴Total ownership includes maintenance, operating, and capital depreciation

Description of Vehicle Usage:

This vehicle is operated by various commercial vehicle fleets throughout the Southwestern United States covering a mixture of city and highway routes. This vehicle is operated five to seven days a week functioning as a typical vehicle in the overall fleet.



Monthly MPG = (miles driven)/(gallons of fuel purchased). Monthly variation in reported MPG may occur due to the difference in fuel tank level at the beginning and end of the month