

Operating Costs

2013 Volkswagen Jetta TDI

VIN: 3VWLL7AJ5DM206371



Vehicle Specifications

Engine: 2.0 L TDI with diesel particulate filter, Inline 4-cylinder

Electric Motor: n/a

Battery: n/a

Class: Compact

Seatbelt Positions: Five

Payload: 1115 lbs

See Vehicle Specifications and Testing Results for more information

Fleet Performance

Operating Cost:

Purchase Cost: \$27,981¹

Purchase Date: November 2012

Resale Value as of 11/2016: \$8,057²

Sale Price: In Operation

Maintenance Cost: \$0.06/mile

Operating Cost: \$0.14/mile³

Total Ownership Cost: \$0.35/mile⁴

Operating Performance:

Total miles driven: 128,282

Cumulative MPG: 35.9

Major Operations & Maintenance Events:

Rebuilt A/C system @94,251 mi Cost: \$1,500

Replaced diesel particulate filter and EGR filter @97,519 mi Cost: \$2,150

¹Purchase includes dealer price with options plus taxes. It does not include title, license, registration, extended warranty or delivery fee costs.

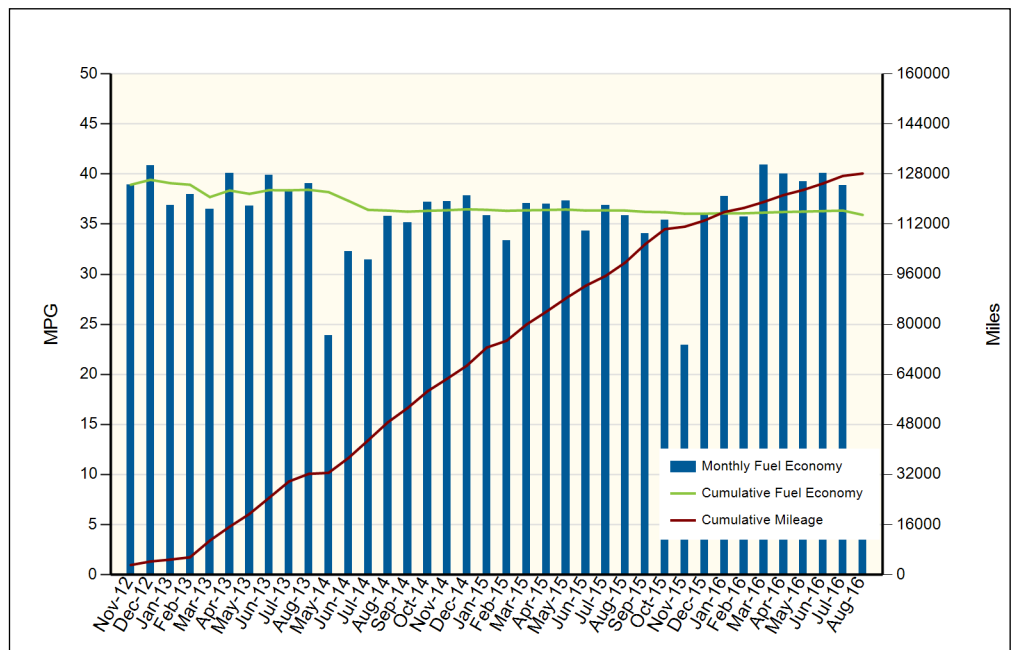
²Per Kelley Blue Book private resale estimate, www.kbb.com.

³Operating costs includes insurance, fuel, and registration costs

⁴Total ownership includes maintenance, operating, and capital depreciation

Description of Vehicle Usage:

This vehicle is operated by various commercial vehicle fleets throughout the Southwestern United States covering a mixture of city and highway routes. This vehicle is operated five to seven days a week functioning as a typical vehicle in the overall fleet.



Monthly MPG = (miles driven)/(gallons of fuel purchased). Monthly variation in reported MPG may occur due to the difference in fuel tank level at the beginning and end of the month