

## Operating Costs



### 2013 Volkswagen Jetta TDI

VIN: 3VWLL7AJ8DM206221

#### Vehicle Specifications

**Engine:** 2.0 L TDI with diesel particulate filter, Inline 4-cylinder

**Electric Motor:** n/a

**Battery:** n/a

**Class:** Compact

**Seatbelt Positions:** Five

**Payload:** 1115 lbs

See Vehicle Specifications and Testing Results for more information

#### Fleet Performance

##### Operating Cost:

Purchase Cost: \$25,974<sup>1</sup>

Purchase Date: November 2012

Resale Value as of 11/2016: \$7,452<sup>2</sup>

Sale Price: In Operation

Maintenance Cost: \$0.05/mile

Operating Cost: \$0.14/mile<sup>3</sup>

Total Ownership Cost: \$0.33/mile<sup>4</sup>

##### Operating Performance:

Total miles driven: 141,097

Cumulative MPG: 35.4

##### Major Operations & Maintenance Events:

Replaced a/c compressor @48,406 mi

Cost: \$605.54

Replaced main coolant fans @125,877

Cost: \$617.64

Replaced heater core, wheel bearing and hub assembly @125,979 Cost: \$1,149.37

<sup>1</sup>Purchase includes dealer price with options plus taxes. It does not include title, license, registration, extended warranty or delivery fee costs.

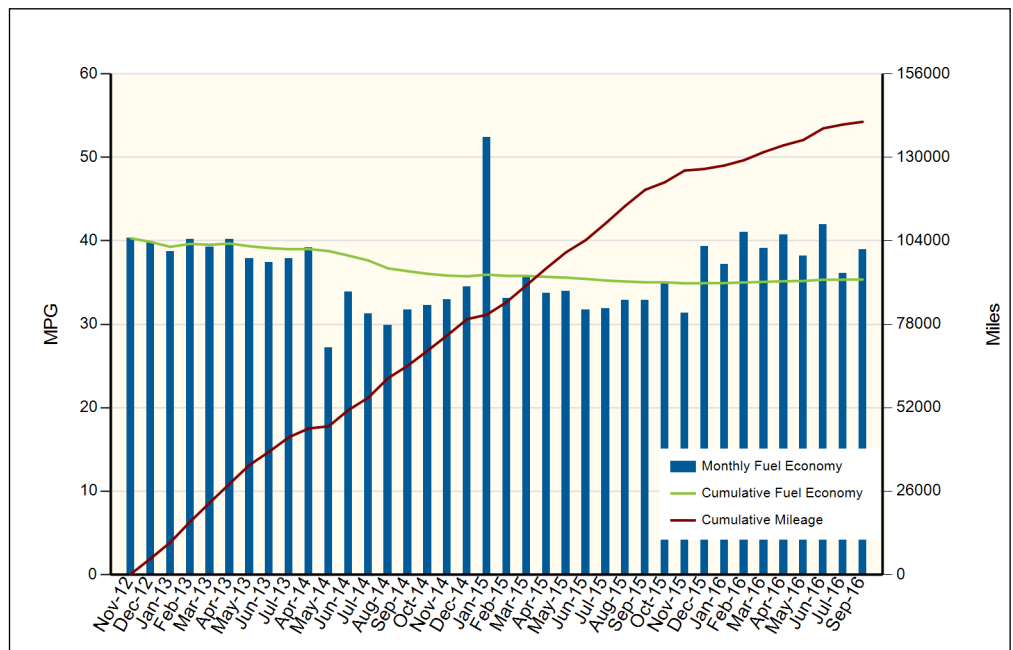
<sup>2</sup>Per Kelley Blue Book private resale estimate, [www.kbb.com](http://www.kbb.com).

<sup>3</sup>Operating costs includes insurance, fuel, and registration costs

<sup>4</sup>Total ownership includes maintenance, operating, and capital depreciation

#### Description of Vehicle Usage:

This vehicle is operated by various commercial vehicle fleets throughout the Southwestern United States covering a mixture of city and highway routes. This vehicle is operated five to seven days a week functioning as a typical vehicle in the overall fleet.



Monthly MPG = (miles driven)/(gallons of fuel purchased). Monthly variation in reported MPG may occur due to the difference in fuel tank level at the beginning and end of the month