

# Operating Costs

## 2013 Volkswagen Jetta TDI

VIN: 3VWLL7AJ8DM365286



### Vehicle Specifications

**Engine:** 2.0 L TDI with diesel particulate filter, Inline 4-cylinder

**Electric Motor:** n/a

**Battery:** n/a

**Class:** Compact

**Seatbelt Positions:** Five

**Payload:** 1115 lbs

See Vehicle Specifications and Testing Results for more information

### Fleet Performance

#### Operating Cost:

Purchase Cost: \$25,974<sup>1</sup>

Purchase Date: November 2012

Resale Value as of 11/2016: \$8,057<sup>2</sup>

Sale Price: In Operation

Maintenance Cost: \$0.04/mile

Operating Cost: \$0.14/mile<sup>3</sup>

Total Ownership Cost: \$0.32/mile<sup>4</sup>

#### Operating Performance:

Total miles driven: 129,141

Cumulative MPG: 34.8

#### Major Operations & Maintenance Events:

Replaced a/c compressor @50,579 mi

Cost: \$1,089.97

<sup>1</sup>Purchase includes dealer price with options plus taxes. It does not include title, license, registration, extended warranty or delivery fee costs.

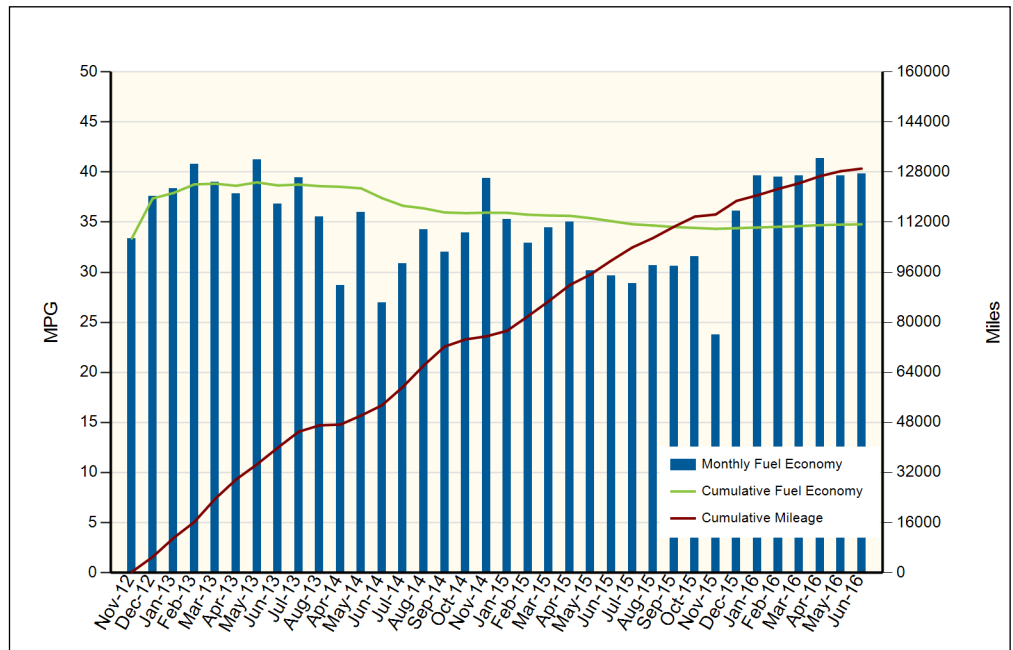
<sup>2</sup>Per Kelley Blue Book private resale estimate, www.kbb.com.

<sup>3</sup>Operating costs includes insurance, fuel, and registration costs

<sup>4</sup>Total ownership includes maintenance, operating, and capital depreciation

### Description of Vehicle Usage:

This vehicle is operated by various commercial vehicle fleets throughout the Southwestern United States covering a mixture of city and highway routes. This vehicle is operated five to seven days a week functioning as a typical vehicle in the overall fleet.



Monthly MPG = (miles driven)/(gallons of fuel purchased). Monthly variation in reported MPG may occur due to the difference in fuel tank level at the beginning and end of the month