

# Operating Costs

## 2012 Honda Civic CNG

VIN: 19XFB5F53CE000672



### Vehicle Specifications

- Engine:** 1.8 L, Inline 4-cylinder
- Electric Motor:** n/a
- Battery:** n/a
- Class:** Compact
- Seatbelt Positions:** Five
- Payload:** 959 lbs

See Vehicle Specifications and Testing Results for more information

### Fleet Performance

#### Operating Cost:

- Purchase Cost: \$28,940<sup>1</sup>
- Purchase Date: November 2012
- Resale Value as of 11/2016: \$5,294<sup>2</sup>
- Sale Price: In Operation
- Maintenance Cost: \$0.02/mile
- Operating Cost: \$0.11/mile<sup>3</sup>
- Total Ownership Cost: \$0.32/mile<sup>4</sup>

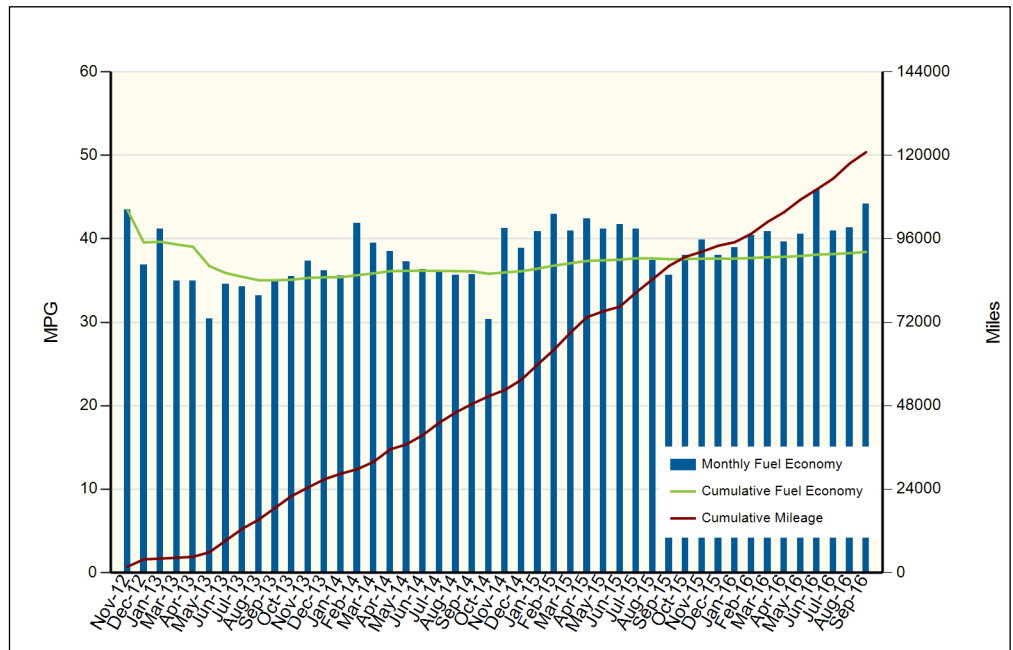
#### Operating Performance:

- Total miles driven: 121,083
- Cumulative MPGe: 38.4

#### Major Operations & Maintenance Events:

### Description of Vehicle Usage:

This vehicle is operated by various commercial vehicle fleets throughout the Southwestern United States covering a mixture of city and highway routes. This vehicle is operated five to seven days a week functioning as a typical vehicle in the overall fleet.



Monthly MPG = (miles driven)/(gallons of fuel purchased). Monthly variation in reported MPG may occur due to the difference in fuel tank level at the beginning and end of the month

<sup>1</sup>Purchase includes dealer price with options plus taxes. It does not include title, license, registration, extended warranty or delivery fee costs.

<sup>2</sup>Per Kelley Blue Book private resale estimate, www.kbb.com.

<sup>3</sup>Operating costs includes insurance, fuel, and registration costs

<sup>4</sup>Total ownership includes maintenance, operating, and capital depreciation