

## Auxiliary Loads: 2014 Mazda 3 i-ELOOP

3/1/2015 through 6/1/2015

Number of Vehicles: 4  
 Location of on-road operation: Arizona  
 Description of use: Courier Fleet

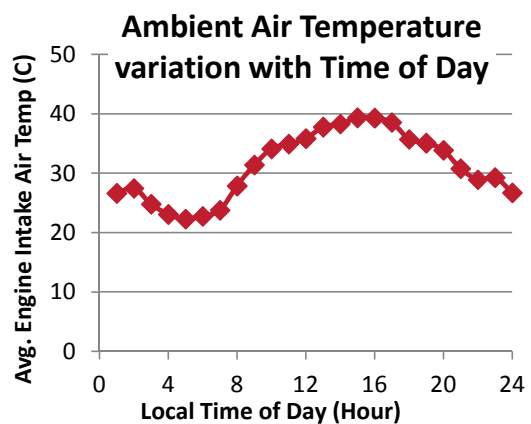
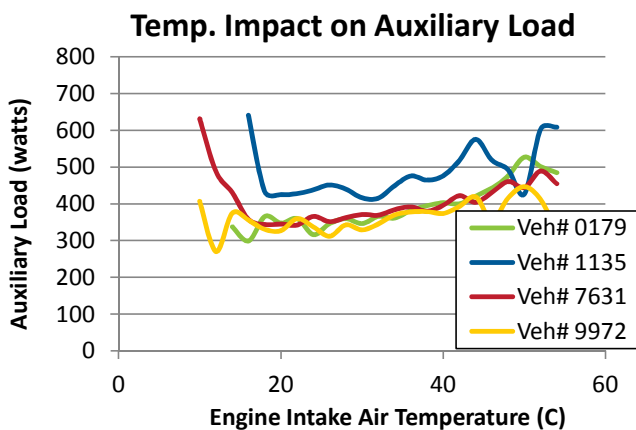
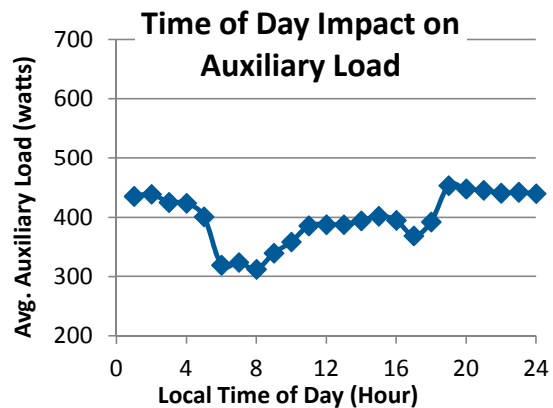
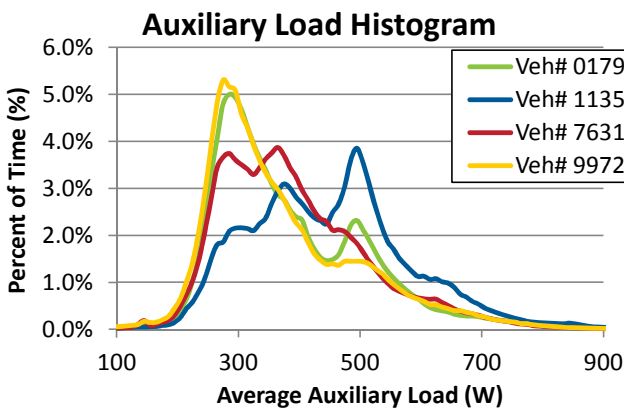


### Description / Specifications

Engine Displacement: 2.5L  
 Engine Fuel Type: gas direct inj.  
 Alternator system description: variable output with 25 V capacitor

### Summary of On-Road Results

Vehicle Number (#)	0179	1135	7631	9972	All
Distance Driven (miles)	12,428	5,810	13,830	12,165	44,234
Average Auxiliary Load (watts)	374.7	439.1	382.2	363.5	382.5
Avg. Engine Intake Air Temp. (C)	34.7	31.5	34.6	34.9	34.3



**Summary of On-Road Driving Characteristics**

Vehicle Number (#)	0179	1135	7631	9972	All
Percent of Driving: City (%)	39.8%	56.4%	63.5%	61.2%	55.3%
Percent of Driving: Highway (%)	60.2%	43.6%	36.5%	38.8%	44.7%
Average Idle Time (%)	23.9%	27.1%	27.9%	26.5%	26.5%

**On-Road Acceleration and Speed Driving Characteristics**

