

## Auxiliary Loads: 2014 Mazda 3 i-ELOOP

6/1/2015 through 9/1/2015

Number of Vehicles: 3  
 Location of on-road operation: Arizona  
 Description of use: Courier Fleet

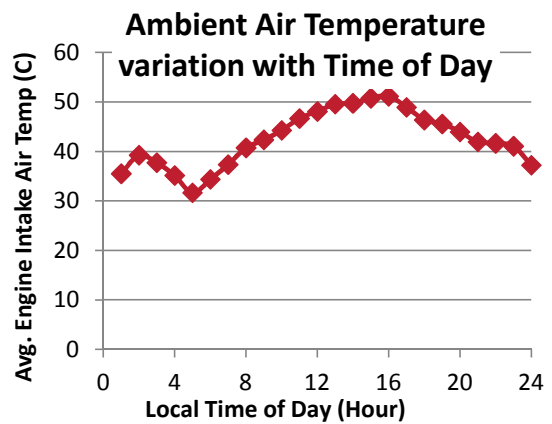
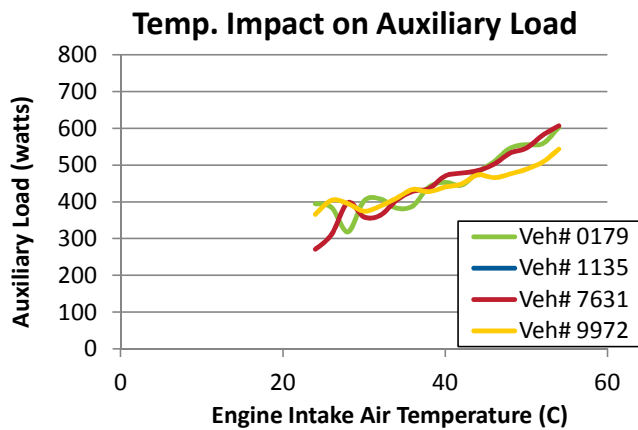
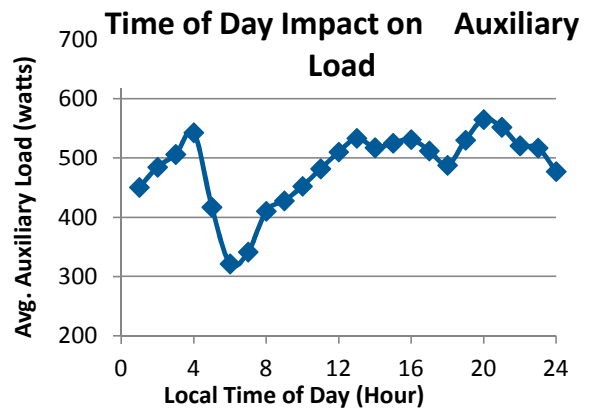
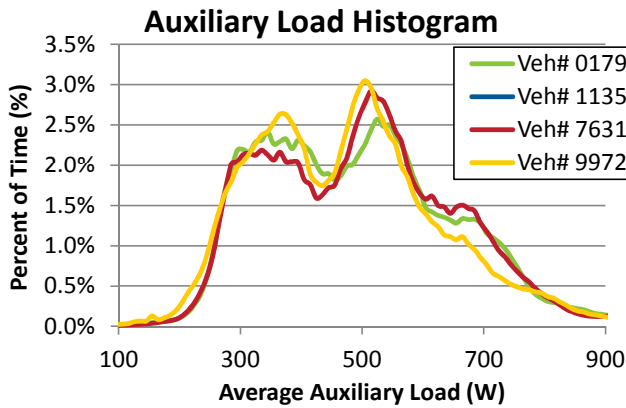


### Description / Specifications

Engine Displacement: 2.5L  
 Engine Fuel Type: gas direct inj.  
 Alternator system description: variable output with 25 V capacitor

### Summary of On-Road Results

Vehicle Number (#)	0179	1135	7631	9972	All
Distance Driven (miles)	11,938	<i>removed</i>	12,540	13,983	38,461
Average Auxiliary Load (watts)	482.5	<i>from</i>	487.6	466.8	477.7
Avg. Engine Intake Air Temp. (C)	46.3	<i>fleet</i>	45.1	45.3	45.6



### Summary of On-Road Driving Characteristics

Vehicle Number (#)	0179	1135	7631	9972	All
Percent of Driving: City (%)	50.2%	-	48.2%	69.7%	56.6%
Percent of Driving: Highway (%)	49.8%	-	51.8%	30.3%	43.4%
Average Idle Time (%)	26.1%	-	24.2%	31.8%	27.4%

### On-Road Acceleration and Speed Driving Characteristics

