

### Auxiliary Loads: 2013 VW Jetta TDI

12/1/2014 through 3/1/2015

Number of Vehicles: 4  
 Location of on-road operation: Arizona  
 Description of use: Taxi service

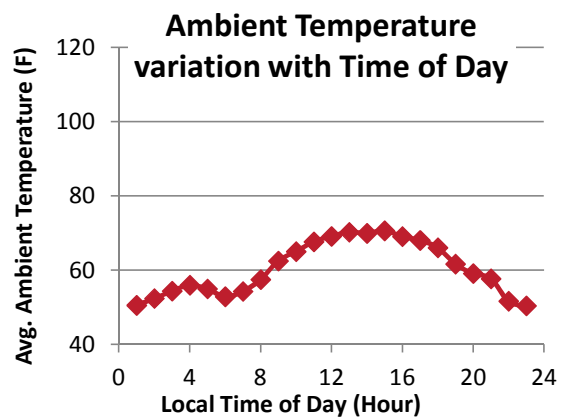
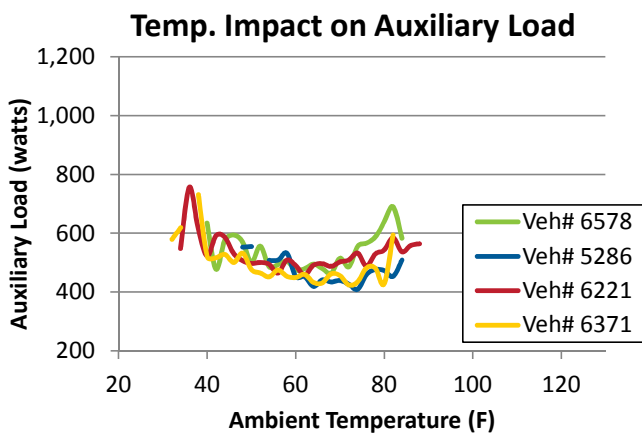
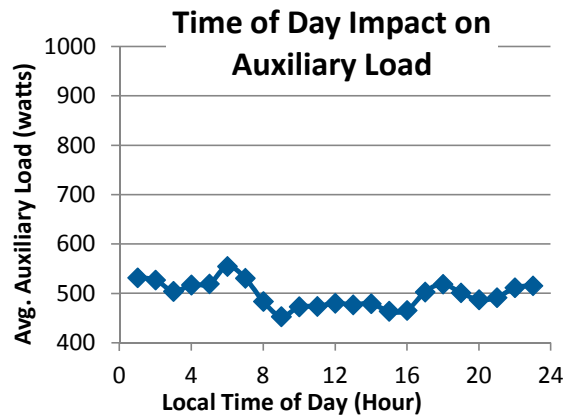
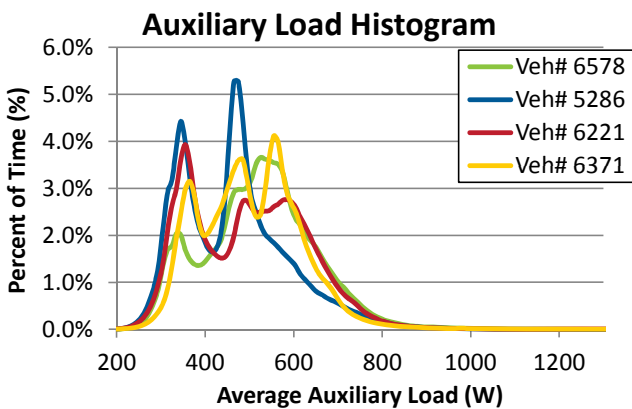


#### Description / Specifications

Engine Displacement: 2.0 L  
 Engine and Fuel Type: Turbo Diesel  
 Alternator max current rating: 140 A

#### Summary of On-Road Results

Vehicle Number (#)	6578	5286	6221	6371	All
Distance Driven (miles)	10,230	5,937	9,946	12,015	38,129
Average Auxiliary Load (watts)	511.2	455.7	490.9	494.5	490.6
Average Ambient Temp. (F)	65.6	66.3	62.9	61.2	63.2



### Summary of On-Road Driving Characteristics

Vehicle Number (#)	6578	5286	6221	6371	All
Percent of Driving: City (%)	93.4%	98.4%	97.4%	85.4%	92.7%
Percent of Driving: Highway (%)	6.6%	1.6%	2.6%	14.6%	7.3%
Average Idle Time (%)	37.5%	44.1%	39.6%	28.5%	35.3%

### On-Road Acceleration and Speed Driving Characteristics

