

## Auxiliary Loads: 2013 VW Jetta TDI

3/1/2015 through 6/1/2015

Number of Vehicles: 4  
 Location of on-road operation: Arizona  
 Description of use: Taxi service

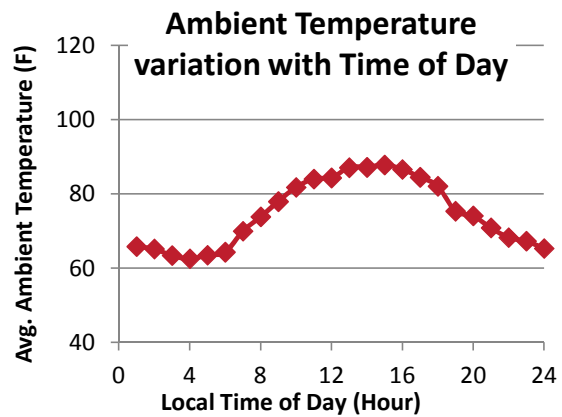
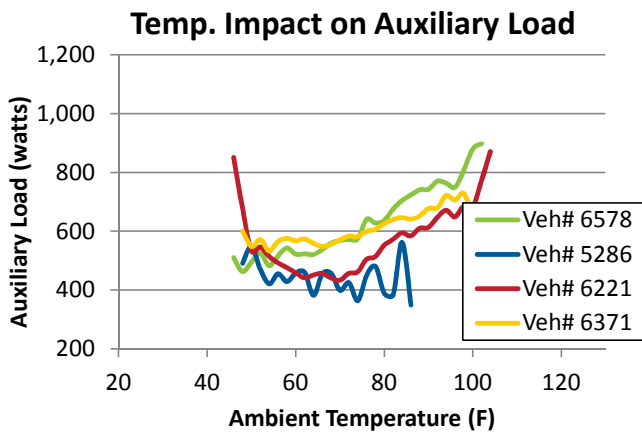
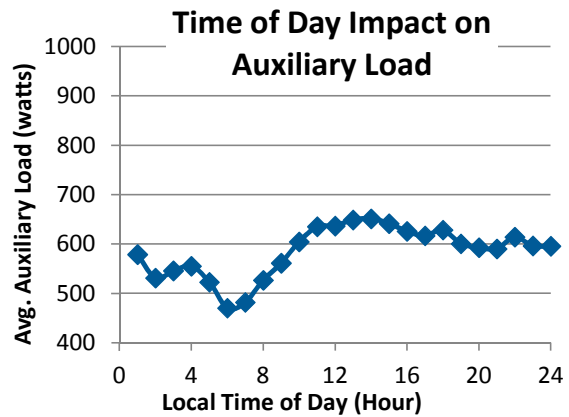
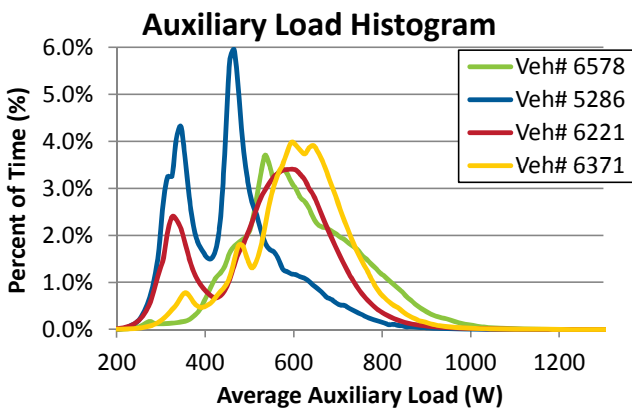


### Description / Specifications

Engine Displacement: 2.0 L  
 Engine and Fuel Type: Turbo Diesel  
 Alternator max current rating: 140 A

### Summary of On-Road Results

Vehicle Number (#)	6578	5286	6221	6371	All
Distance Driven (miles)	15,287	1,879	15,154	10,589	42,909
Average Auxiliary Load (watts)	609.0	452.1	535.0	602.1	567.3
Average Ambient Temp. (F)	76.4	66.4	79.6	73.6	76.2



### Summary of On-Road Driving Characteristics

Vehicle Number (#)	6578	5286	6221	6371	All
Percent of Driving: City (%)	92.9%	100.0%	94.1%	73.1%	88.8%
Percent of Driving: Highway (%)	7.1%	0.0%	5.9%	26.9%	11.2%
Average Idle Time (%)	33.2%	44.7%	38.7%	27.1%	33.0%

### On-Road Acceleration and Speed Driving Characteristics

