

Auxiliary Loads: 2014 Chevrolet Cruze Diesel

12/1/2014 through 3/1/2015

Number of Vehicles: 4
 Location of on-road operation: Texas
 Description of use: Courier Fleet

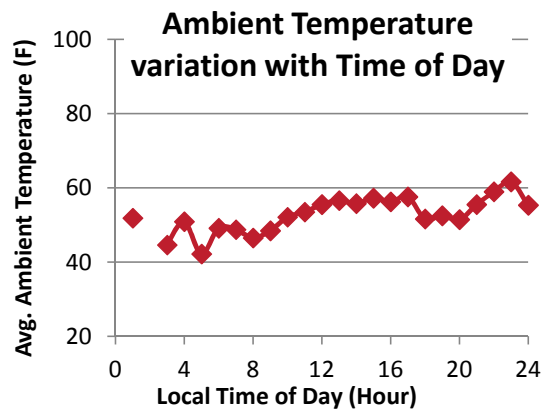
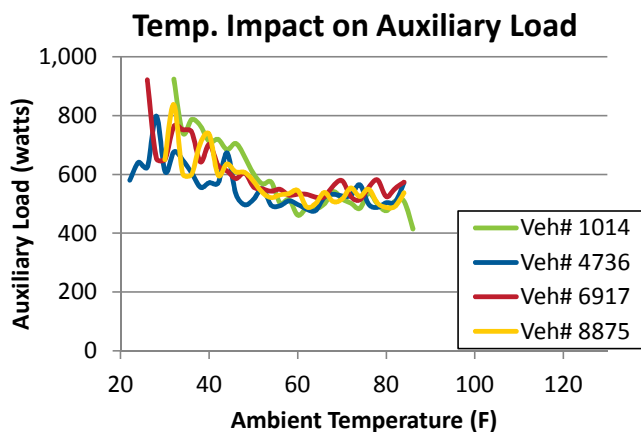
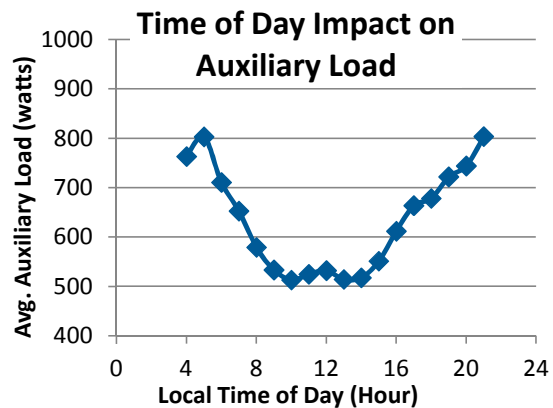
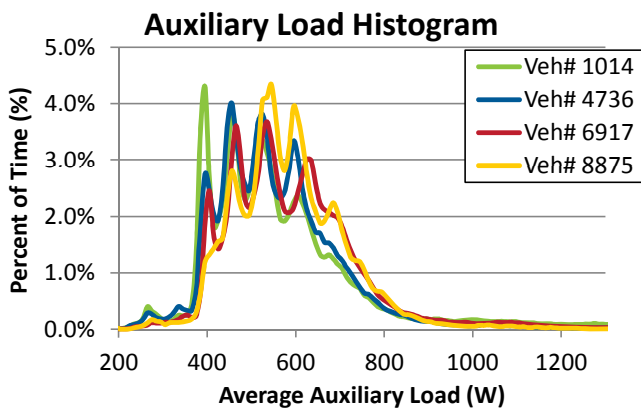


Description / Specifications

Engine Displacement: 2.0 L
 Engine and Fuel Type: Turbo Diesel
 Alternator max current rating: 140 A

Summary of On-Road Results

Vehicle Number (#)	1014	4736	6917	8875	AIT
Distance Driven (miles)	4,939	7,101	10,590	5,407	28,038
Average Auxiliary Load (watts)	593.5	560.7	597.0	578.2	584.3
Average Ambient Temp. (F)	54.0	51.5	50.4	57.4	52.7



Summary of On-Road Driving Characteristics

Vehicle Number (#)	1014	4736	6917	8875	All
Percent of Driving: City (%)	71.6%	49.7%	56.7%	57.2%	57.7%
Percent of Driving: Highway (%)	28.4%	50.3%	43.3%	42.8%	42.3%
Average Idle Time (%)	21.8%	22.1%	20.7%	22.2%	21.6%

On-Road Acceleration and Speed Driving Characteristics

