

## Auxiliary Loads: 2014 Chevrolet Cruze Diesel

8/6/2014 through 9/1/2015

Number of Vehicles: 4  
 Location of on-road operation: Texas  
 Description of use: Courier Fleet

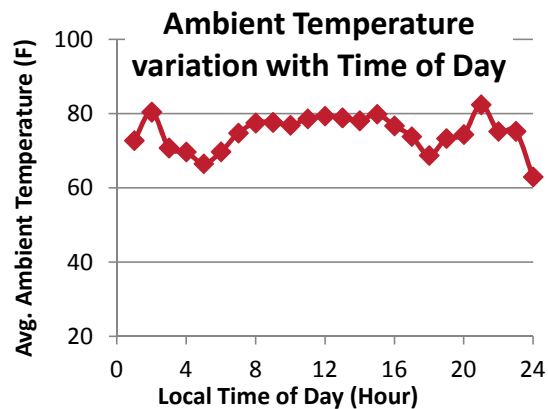
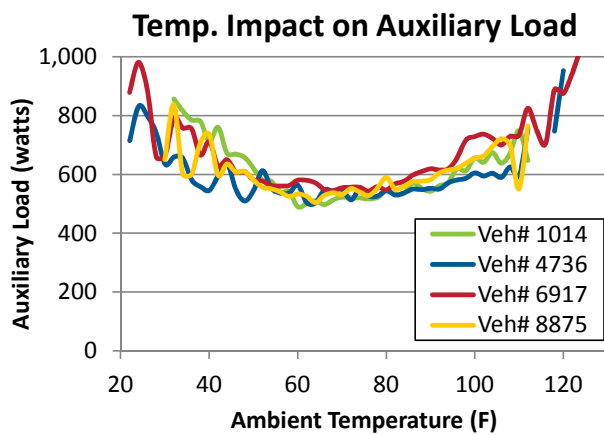
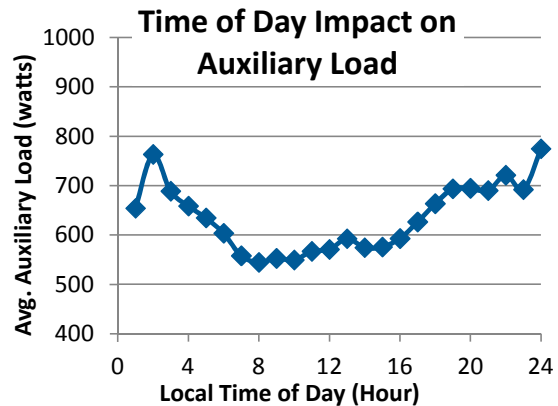
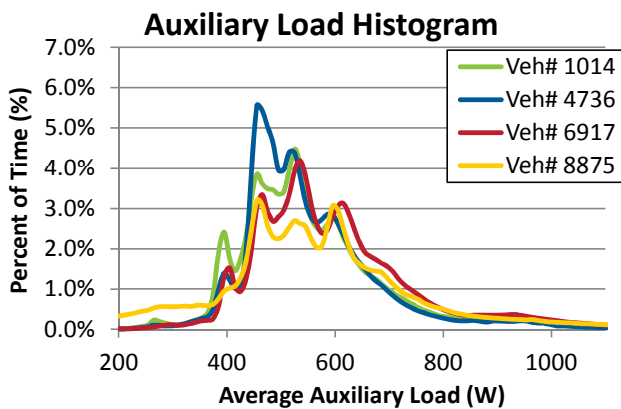


### Description / Specifications

Engine Displacement: 2.0 L  
 Engine and Fuel Type: Turbo Diesel  
 Alternator max current rating: 140 A

### Summary of On-Road Results

Vehicle Number (#)	1014	4736	6917	8875	ATI
Distance Driven (miles)	23,909	35,780	36,447	26,399	122,535
Average Auxiliary Load (watts)	563.0	547.1	594.6	574.1	570.2
Average Ambient Temp. (F)	75.5	76.9	72.9	80.4	75.9



**Summary of On-Road Driving Characteristics**

Vehicle Number (#)	1014	4736	6917	8875	All
Percent of Driving: City (%)	63.2%	50.0%	55.3%	57.6%	55.8%
Percent of Driving: Highway (%)	36.8%	50.0%	44.7%	42.4%	44.2%
Average Idle Time (%)	22.3%	21.4%	20.7%	22.8%	21.7%

**On-Road Acceleration and Speed Driving Characteristics**

