

## Auxiliary Loads: 2012 Honda Civic CNG

6/27/2014 through 9/1/2014

Number of Vehicles: 4  
 Location of on-road operation: Texas / Oklahoma  
 Description of use: Courier Fleet

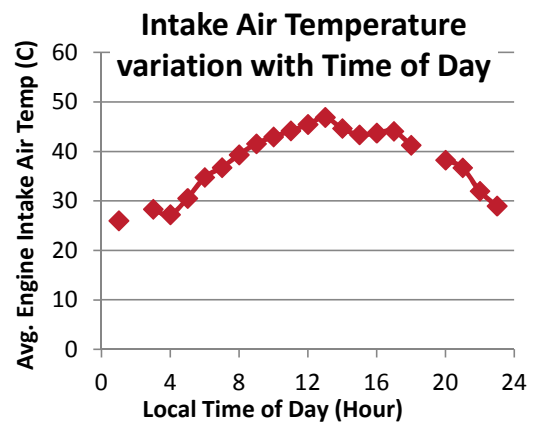
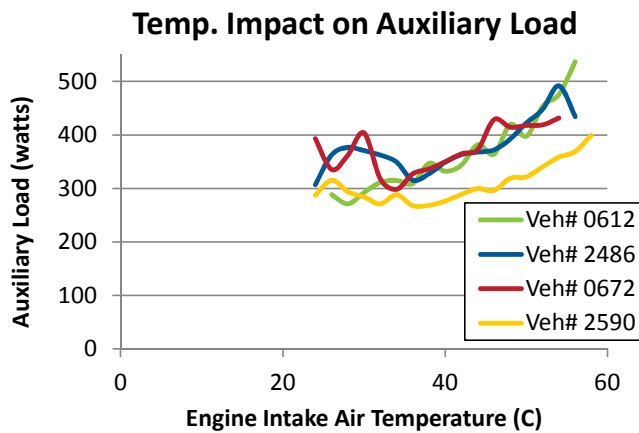
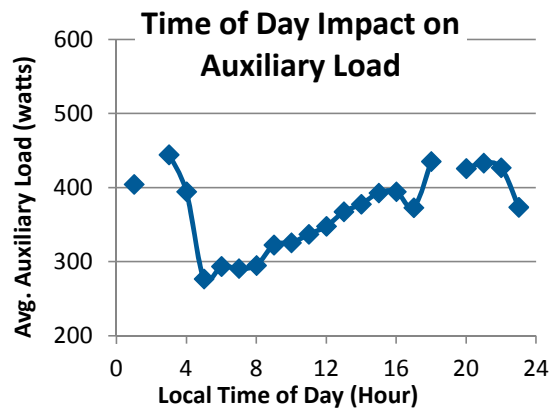
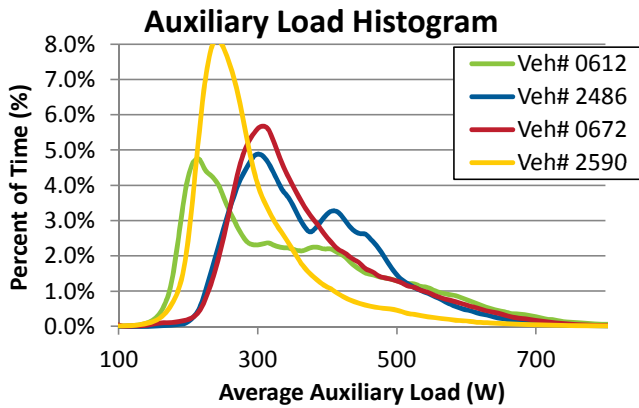


### Description / Specifications

Engine Displacement 1.8 L  
 Engine Fuel Type CNG  
 Alternator max current rating 95 A

### Summary of On-Road Results

| Vehicle Number (#)               | 0612  | 2486  | 0672  | 2590  | All    |
|----------------------------------|-------|-------|-------|-------|--------|
| Distance Driven (miles)          | 3,071 | 4,933 | 5,949 | 6,774 | 20,727 |
| Average Auxiliary Load (watts)   | 343.1 | 366.6 | 362.8 | 292.6 | 337.8  |
| Avg. Engine Intake Air Temp. (C) | 42.0  | 41.8  | 39.9  | 42.6  | 41.8   |



**Summary of On-Road Driving Characteristics**

| Vehicle Number (#)              | 0612  | 2486  | 0672  | 2590  | All   |
|---------------------------------|-------|-------|-------|-------|-------|
| Percent of Driving: City (%)    | 78.3% | 45.7% | 54.4% | 61.8% | 58.3% |
| Percent of Driving: Highway (%) | 21.7% | 54.3% | 45.6% | 38.2% | 41.7% |
| Average Idle Time (%)           | 24.9% | 23.8% | 20.9% | 22.6% | 23.0% |

**On-Road Acceleration and Speed Driving Characteristics**

