

## Auxiliary Loads: 2012 Honda Civic CNG

6/1/2015 through 9/1/2015

Number of Vehicles: 4  
 Location of on-road operation: Texas / Oklahoma  
 Description of use: Courier Fleet

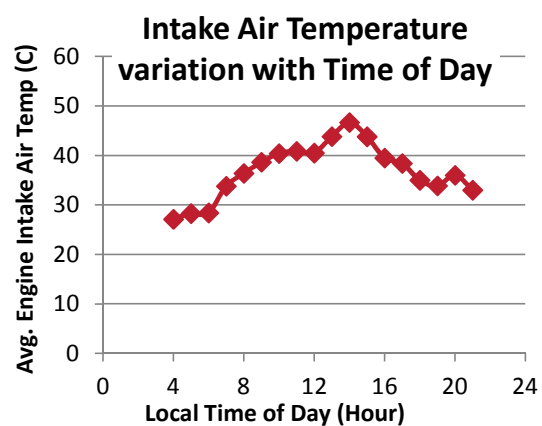
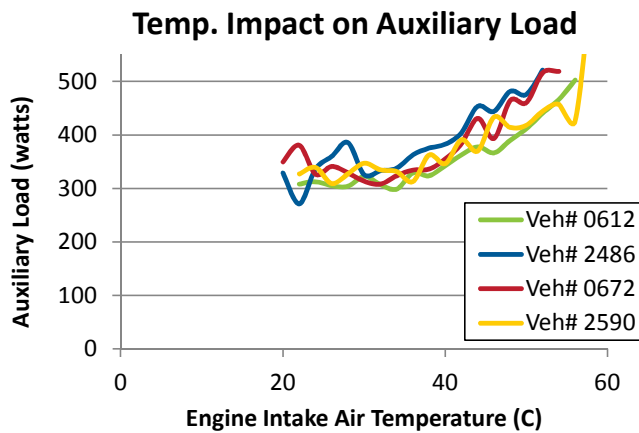
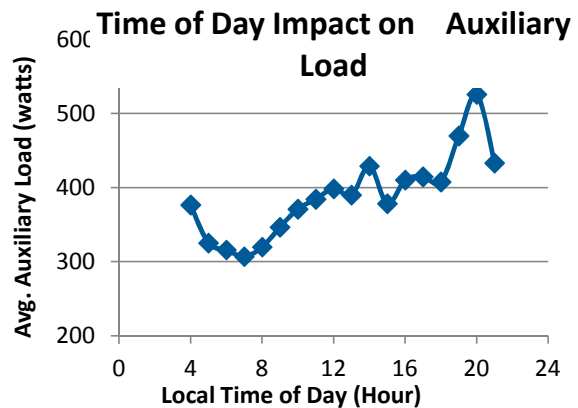
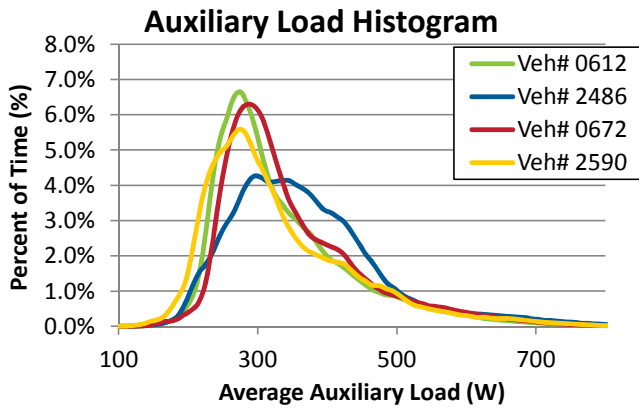


### Description / Specifications

Engine Displacement: 1.8 L  
 Engine Fuel Type: CNG  
 Alternator max current rating: 95 A

### Summary of On-Road Results

Vehicle Number (#)	0612	2486	0672	2590	All
Distance Driven (miles)	8,344	7,579	9,082	7,400	32,405
Average Auxiliary Load (watts)	325.5	358.7	338.6	332.7	338.0
Avg. Engine Intake Air Temp. (C)	39.0	38.2	37.5	39.3	38.5



### Summary of On-Road Driving Characteristics

Vehicle Number (#)	0612	2486	0672	2590	All
Percent of Driving: City (%)	27.7%	13.0%	19.2%	16.9%	19.4%
Percent of Driving: Highway (%)	72.3%	87.0%	80.8%	83.1%	80.6%
Average Idle Time (%)	21.9%	19.3%	21.3%	20.1%	20.8%

### On-Road Acceleration and Speed Driving Characteristics

