

On-Road Usage and Performance Summary for 2015 Honda Accord VIN 5439

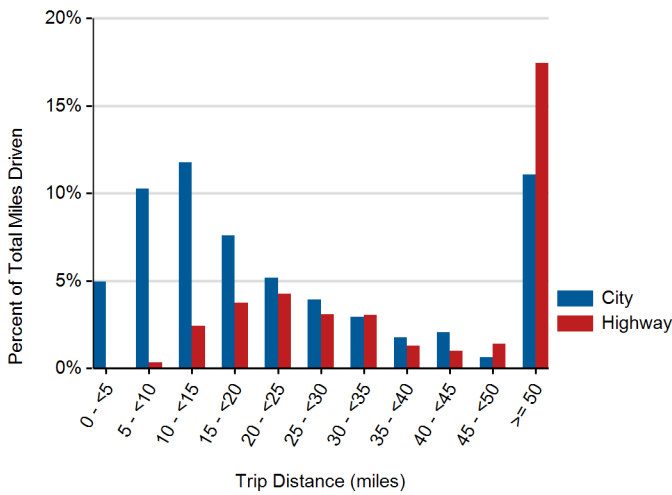
Reporting Period: March 2015 through May 2016

Usage and Performance Statistics¹

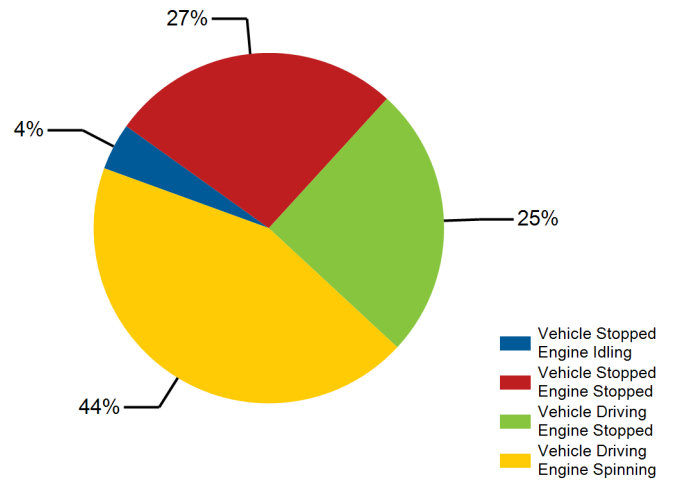
Overall gasoline fuel economy (mpg)	40
Total distance driven (mi)	78,472
Average trip distance (mi)	13.8
Percent of miles city highway ²	62% 38%
Average ambient temperature (deg F)	---
Percent of time driven with air conditioning selected	89%



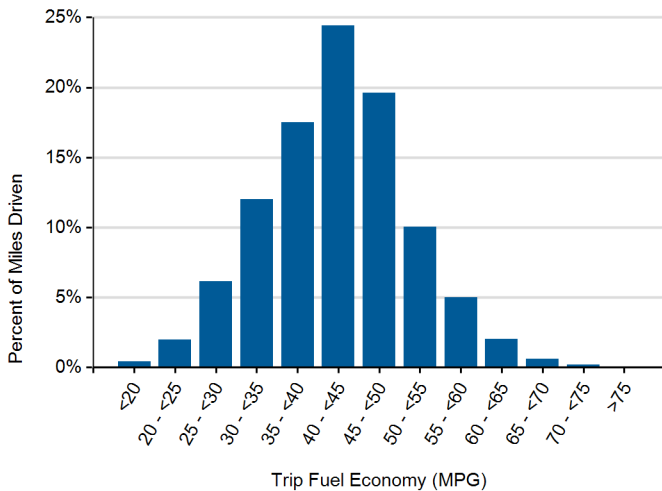
Distribution of Trip Distance by Trip Type¹



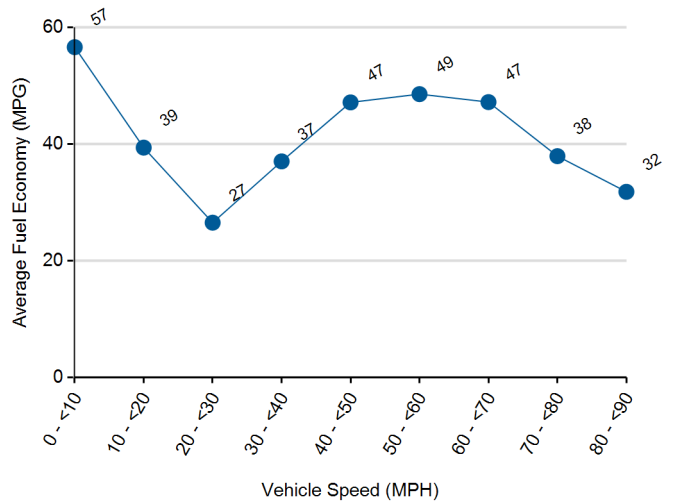
Percent of Drive Time by Operating Mode¹



Distribution of Trip Fuel Economy¹



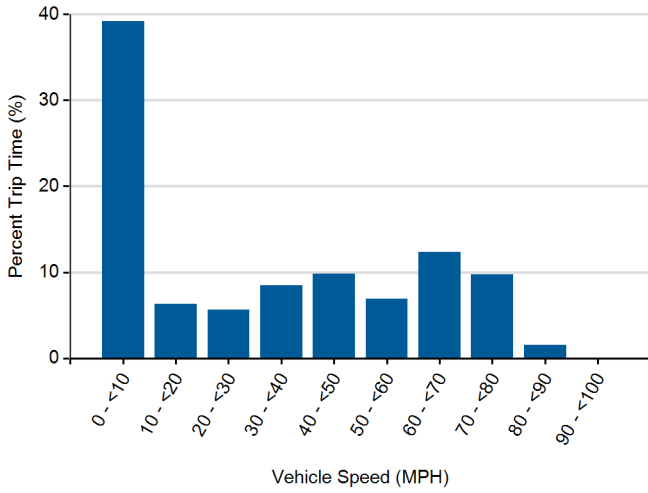
Average Fuel Economy at Speed¹



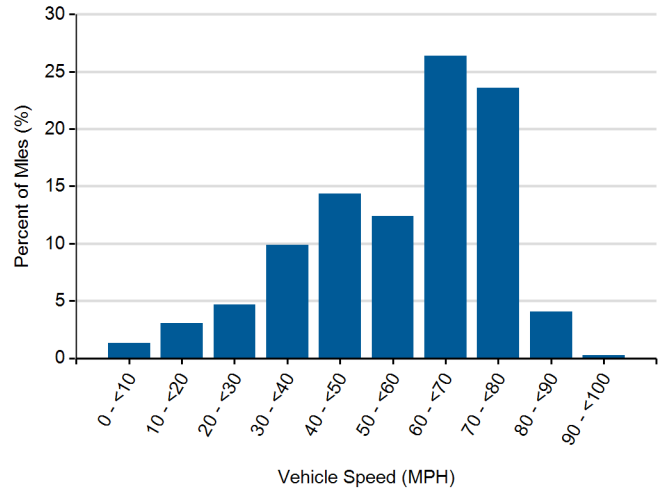
1. Calculated from on-board electronic data logged over 78,472 miles, which may be a subset of total lifetime miles driven.

2. Calculated based upon trip average driving speed per SAE J2841.

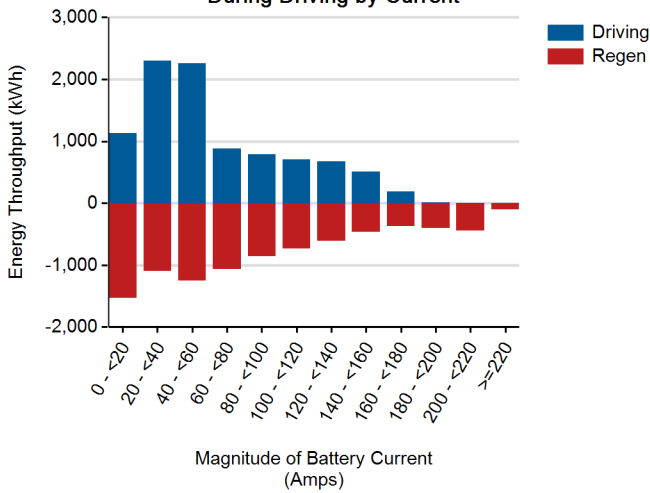
Distribution of Driving Time by Vehicle Speed¹



Distribution of Driving Distance by Vehicle Speed¹



Battery Energy Throughput During Driving by Current¹



Battery Energy Throughput During Driving by Pack Temperature¹

