

On-Road Usage and Performance Summary for 2013 Ford C-Max SE VIN 2158

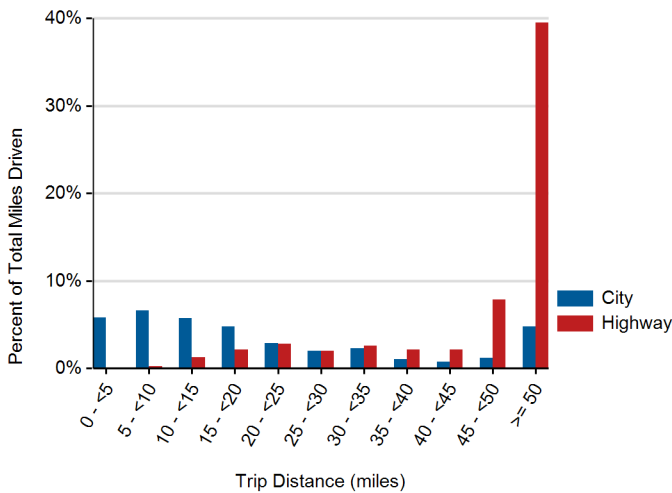
Reporting Period: January 2014 through April 2016

Usage and Performance Statistics¹

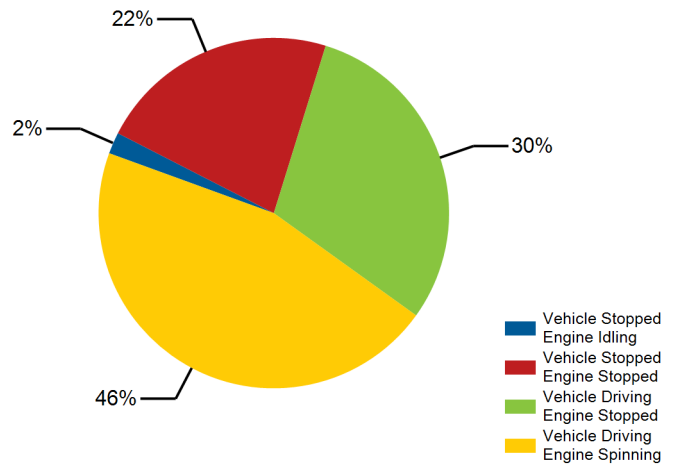
Overall gasoline fuel economy (mpg)	43
Total distance driven (mi)	131,439
Average trip distance (mi)	15.1
Percent of miles city highway ²	38% 62%
Average ambient temperature (deg F)	81.0
Percent of time driven with air conditioning selected	92%



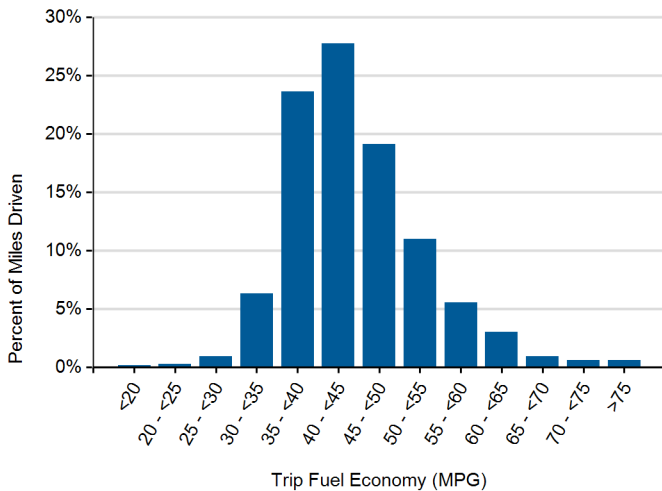
Distribution of Trip Distance by Trip Type¹



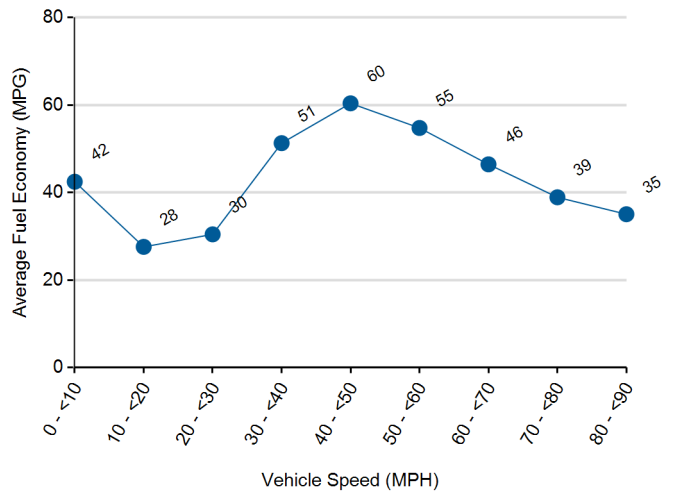
Percent of Drive Time by Operating Mode¹



Distribution of Trip Fuel Economy¹



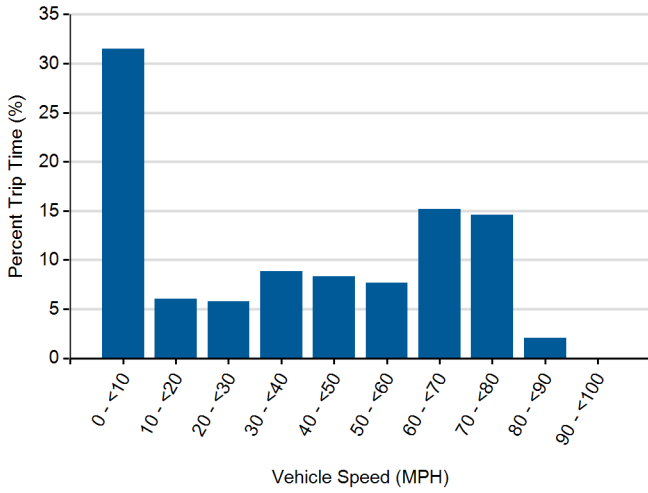
Average Fuel Economy at Speed¹



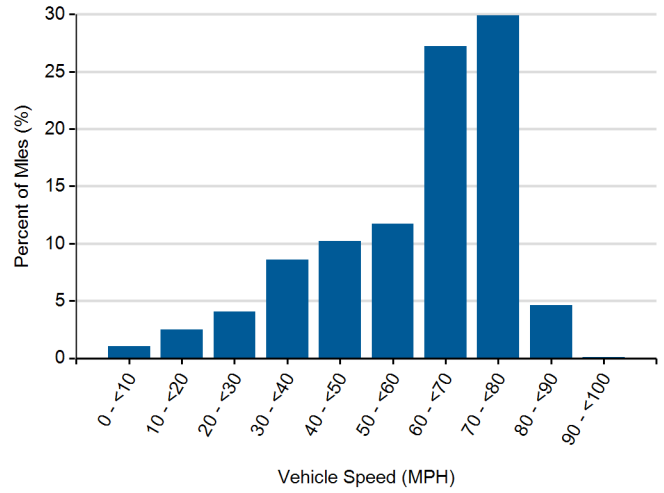
1. Calculated from on-board electronic data logged over 131,439 miles, which may be a subset of total lifetime miles driven.

2. Calculated based upon trip average driving speed per SAE J2841.

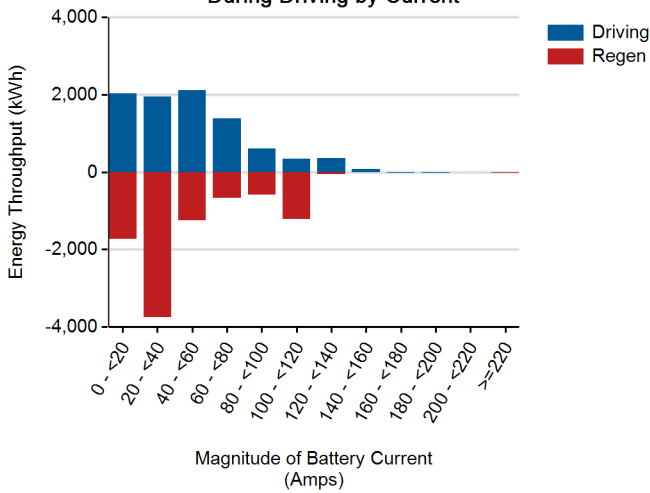
Distribution of Driving Time by Vehicle Speed¹



Distribution of Driving Distance by Vehicle Speed¹



Battery Energy Throughput During Driving by Current¹



Battery Energy Throughput During Driving by Pack Temperature¹

