

## HEV Fleet Testing



**2011 Hyundai  
Sonata**  
VIN: 3539

## Fleet Testing Results To Date

### Operating Statistics

Distance Driven<sup>1</sup>: 160,019  
Average Trip Distance<sup>2</sup>: 18.4 mi  
Stop Time with Engine Idling<sup>2</sup>: 12%  
Trip Type City/Highway<sup>2</sup>: 73%/27%

### Operating Performance

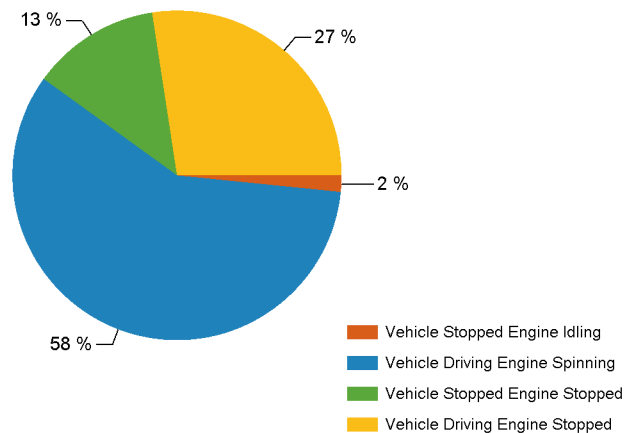
Cumulative MPG<sup>1</sup>: 33.3

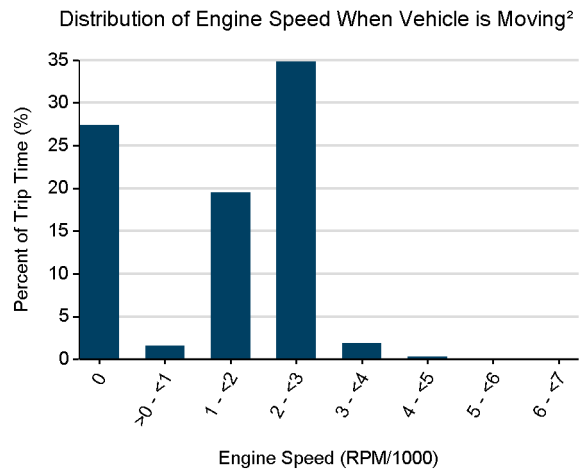
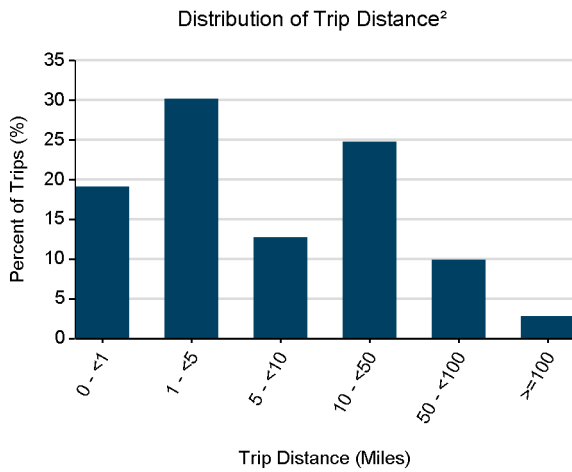
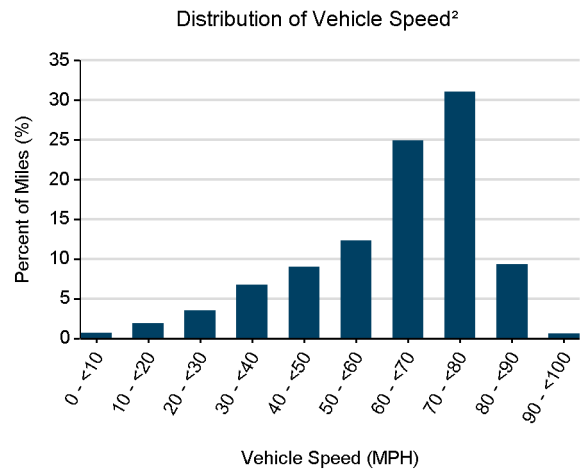
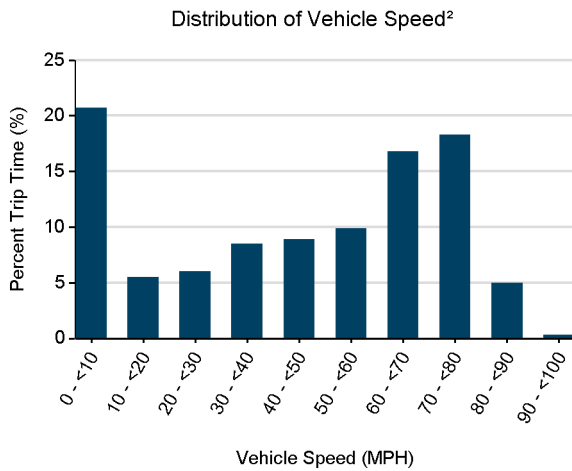
*See HEV America Baseline Performance and Fleet Testing Fuel Economy fact sheets for more information on vehicle specifications and fuel usage reporting, available at <http://avt.inl.gov/>*

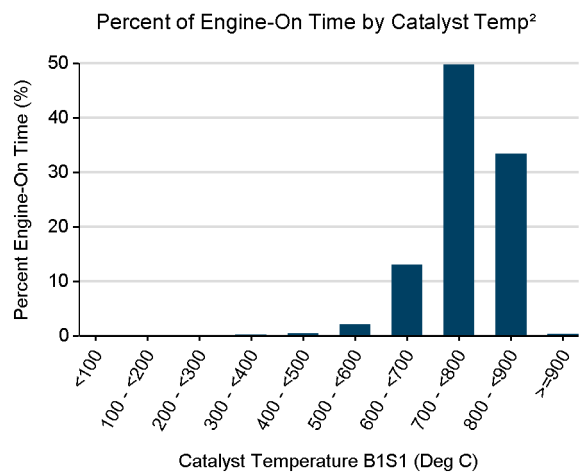
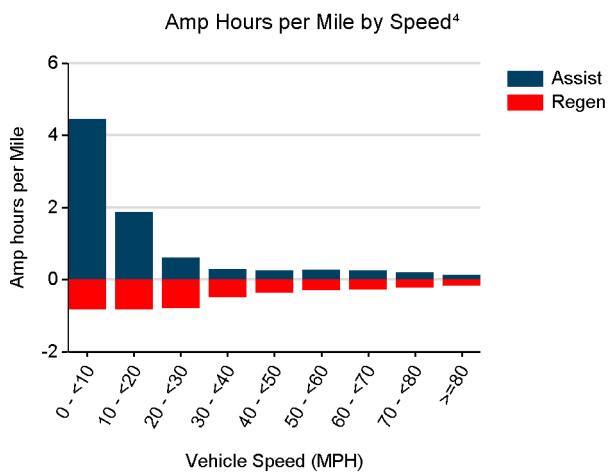
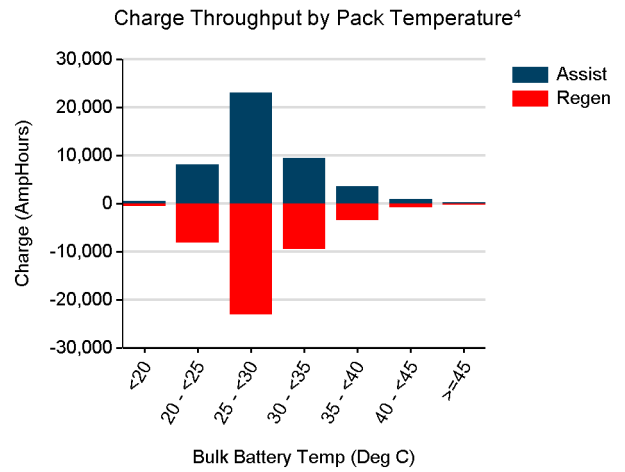
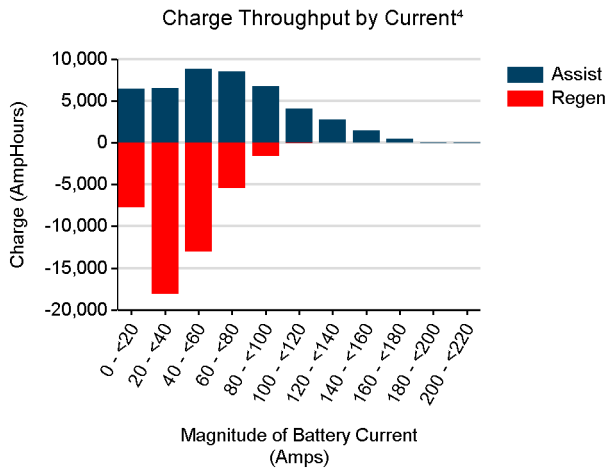
### Test Notes

1. Calculated over the life of the vehicle based on odometer reading and fuel logs. More information available in Fleet Testing Fuel Economy sheet.
2. Calculated from electronic data logged over a subset of total miles traveled equal to 149,998 miles.
3. Fuel economy calculated for this figure using mass air flow over dynamic vehicle operation.
4. Calculated from battery current data logged over a subset of total miles traveled, equal to 149,997 miles.

Percent of Drive Time by Operating Mode<sup>2</sup>







Total charge into battery pack (Ah)<sup>4</sup>: 45,929  
 Total charge out of battery pack (Ah)<sup>4</sup>: 45,795  
 Battery round trip efficiency<sup>4</sup>: 100%