

HEV Fleet Testing



**2011 Honda
CRZ EX**
VIN: 4466

Fleet Testing Results To Date

Operating Statistics

Distance Driven¹: 160,020
 Average Trip Distance²: 11.7 mi
 Stop Time with Engine Idling²: 75%
 Trip Type City/Highway²: 84%/16%

Operating Performance

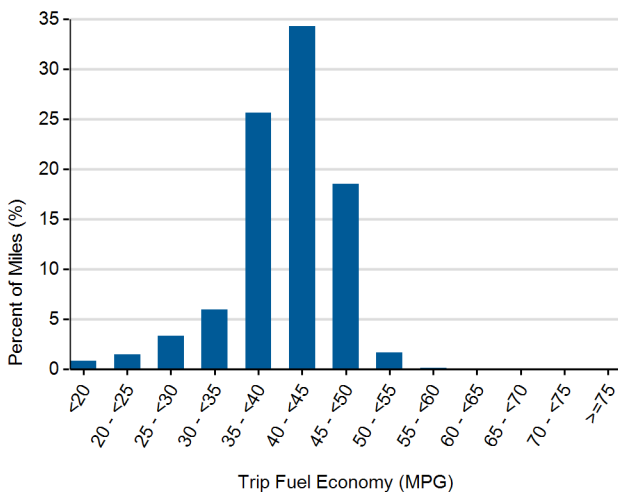
Cumulative MPG¹: 36.8

See HEV America Baseline Performance and Fleet Testing Fuel Economy fact sheets for more information on vehicle specifications and fuel usage reporting, available at <http://avt.inl.gov/>

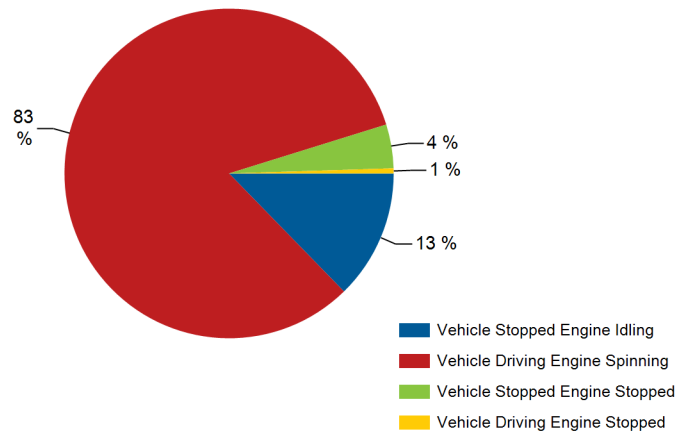
Test Notes

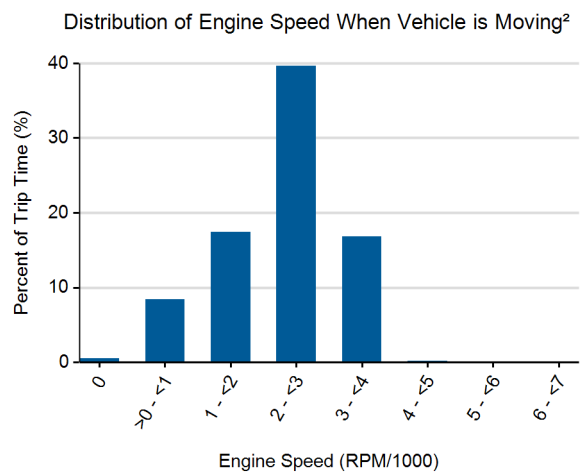
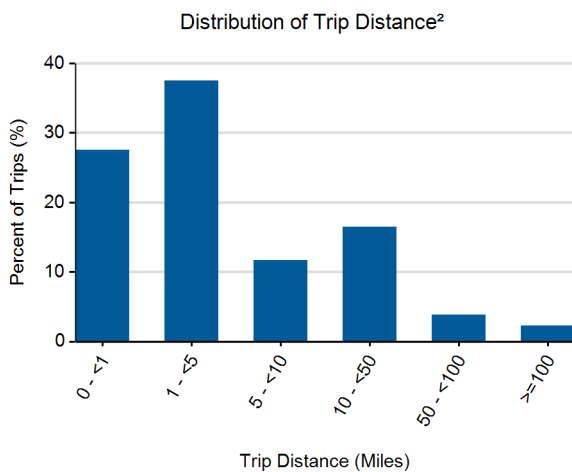
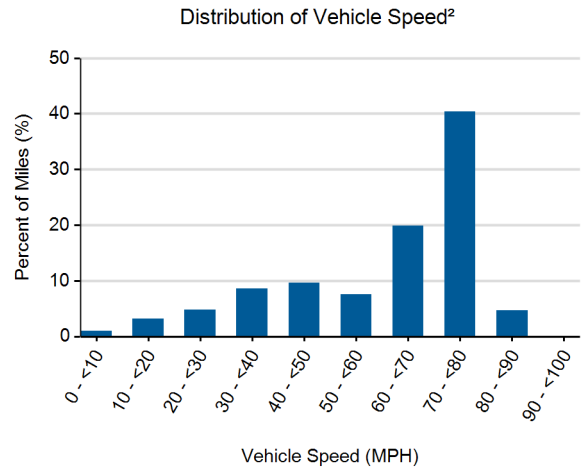
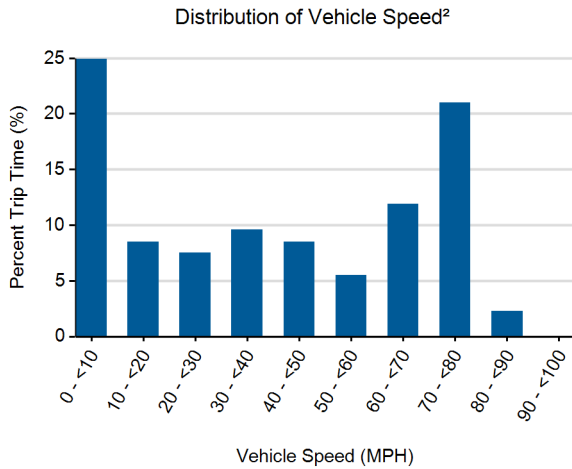
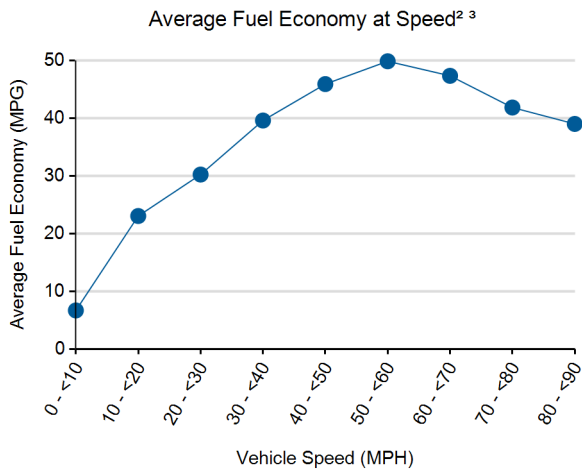
1. Calculated over the life of the vehicle based on odometer reading and fuel logs. More information available in Fleet Testing Fuel Economy sheet.
2. Calculated from electronic data logged over a subset of total miles traveled equal to 149,319 miles.
3. Fuel economy calculated for this figure using mass air flow over dynamic vehicle operation.
4. Calculated from battery power data logged over a subset of total miles traveled, equal to 149,319 miles.

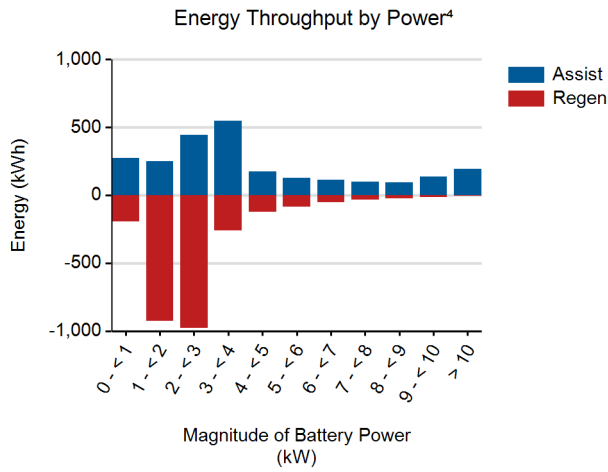
Distribution of Trip Fuel Economy^{2 3}



Percent of Drive Time by Operating Mode²

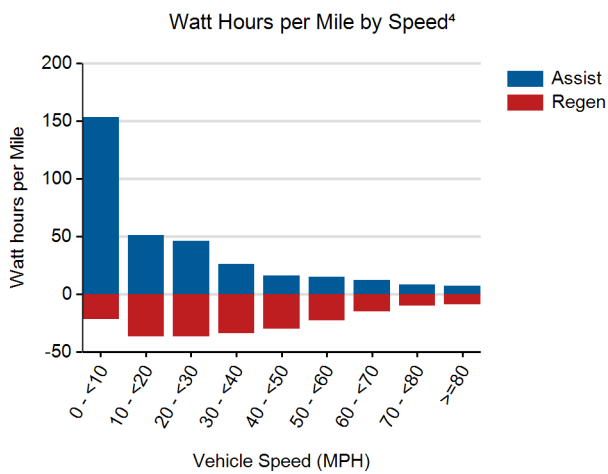




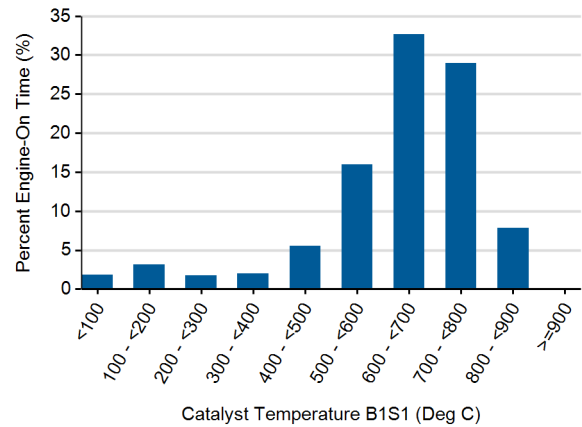


Energy Throughput by Pack Temperature⁴

No Data Available



Percent of Engine-On Time by Catalyst Temp²



Total energy into battery pack (kWh)⁴: 2,712
 Total energy out of battery pack (kWh)⁴: 2,429
 Battery round trip energy efficiency⁴: 90%