

# HEV Fleet Testing



**2011 Honda  
CRZ**  
VIN: 2982

## Fleet Testing Results To Date

### Operating Statistics

Distance Driven<sup>1</sup>: 158,644  
 Average Trip Distance<sup>2</sup>: 8.4 mi  
 Stop Time with Engine Idling<sup>2</sup>: 89%  
 Trip Type City/Highway<sup>2</sup>: 85%/15%

### Operating Performance

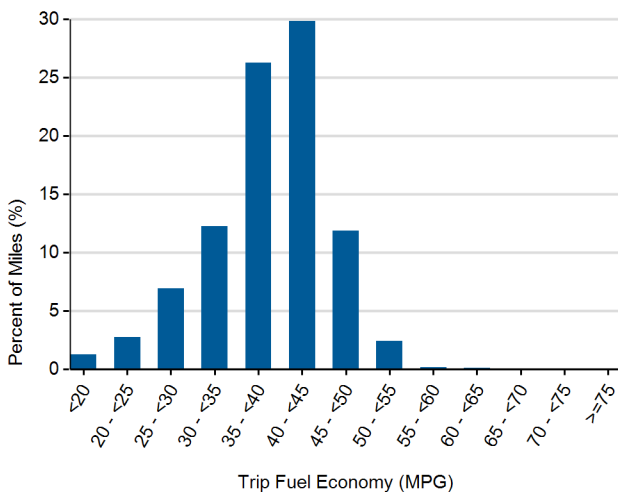
Cumulative MPG<sup>1</sup>: 34.8

*See HEV America Baseline Performance and Fleet Testing Fuel Economy fact sheets for more information on vehicle specifications and fuel usage reporting, available at <http://avt.inl.gov/>*

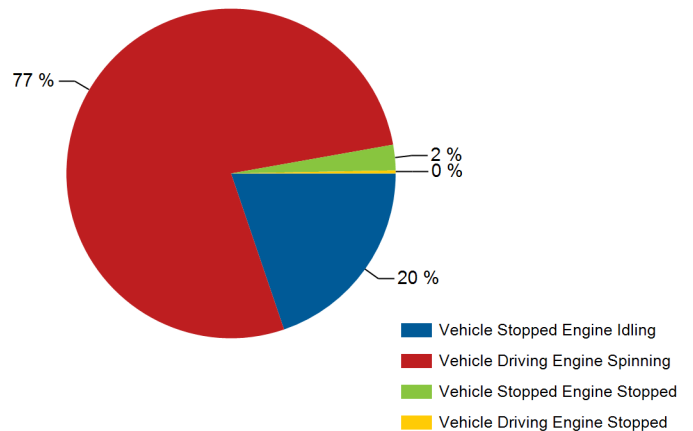
### Test Notes

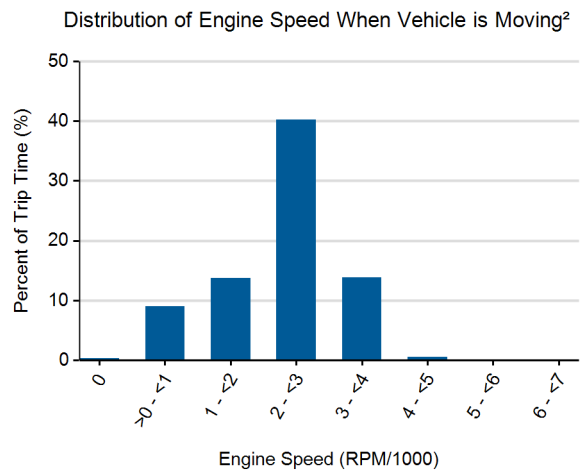
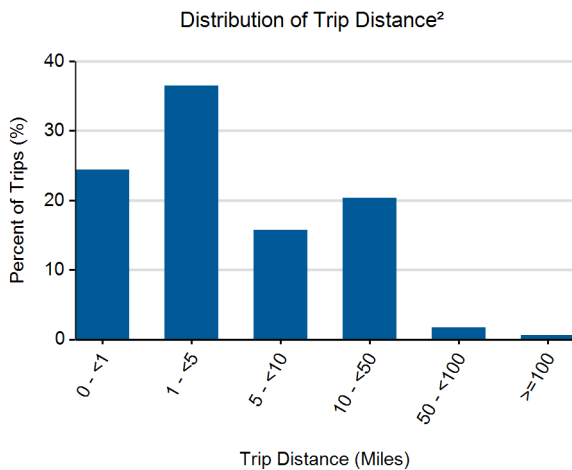
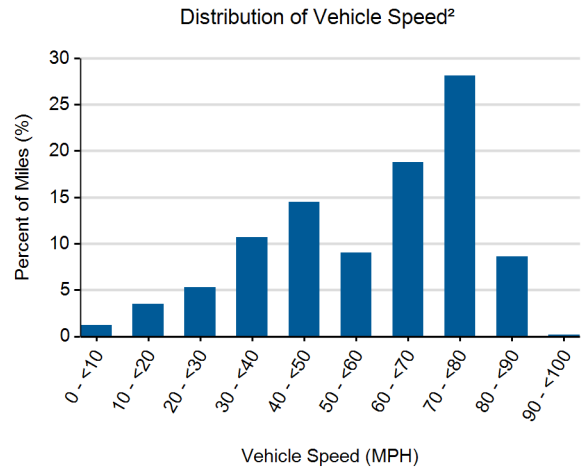
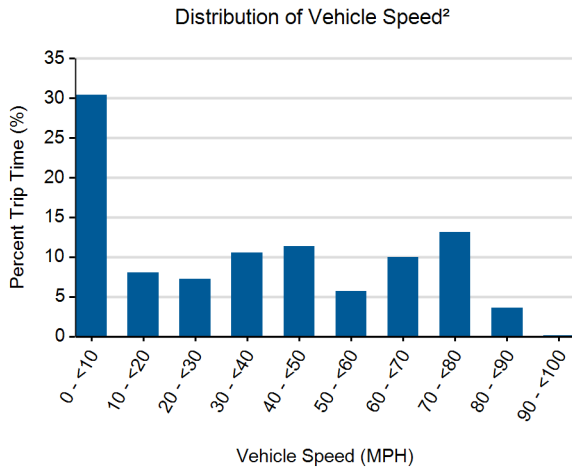
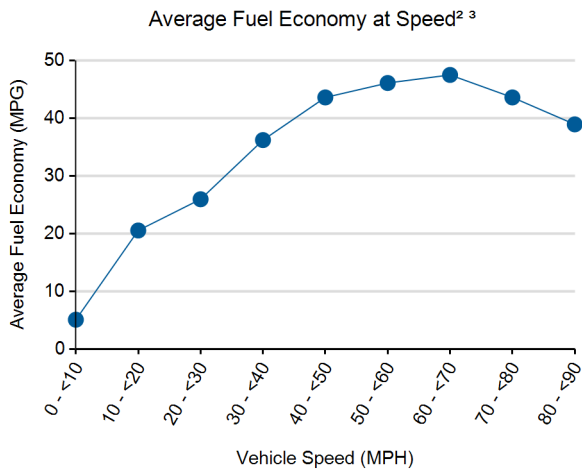
1. Calculated over the life of the vehicle based on odometer reading and fuel logs. More information available in Fleet Testing Fuel Economy sheet.
2. Calculated from electronic data logged over a subset of total miles traveled equal to 129,655 miles.
3. Fuel economy calculated for this figure using mass air flow over dynamic vehicle operation.
4. Calculated from battery power data logged over a subset of total miles traveled, equal to 129,655 miles.

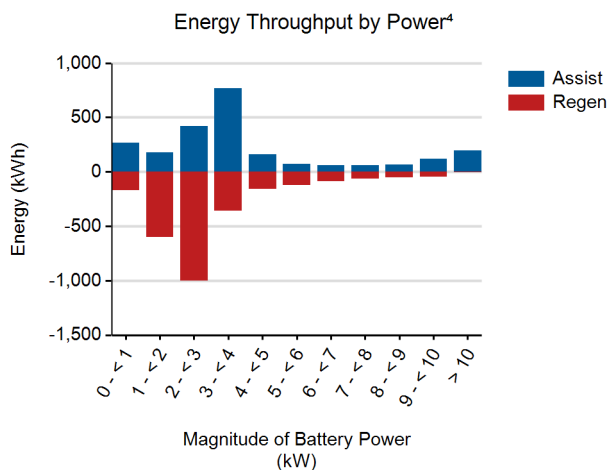
Distribution of Trip Fuel Economy<sup>2 3</sup>



Percent of Drive Time by Operating Mode<sup>2</sup>

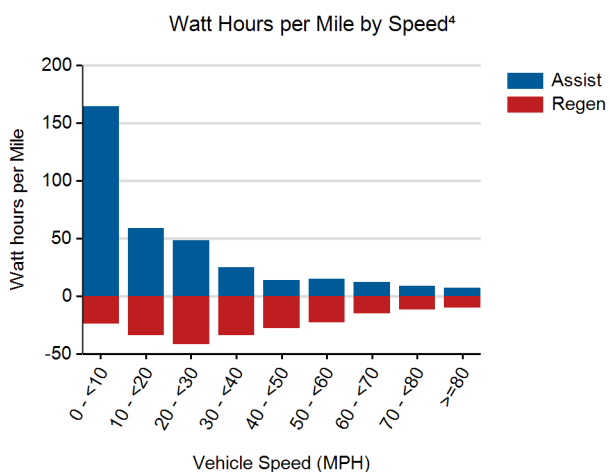




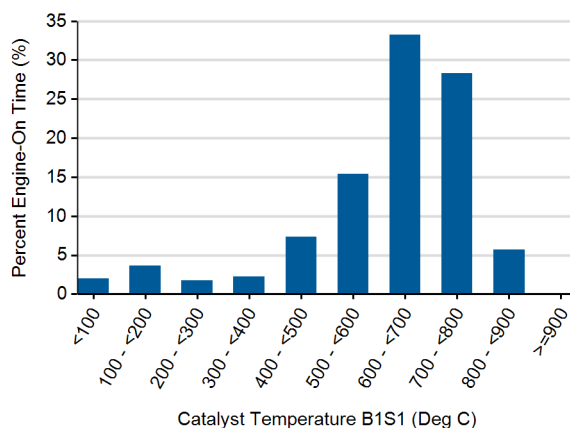


Energy Throughput by Pack Temperature<sup>4</sup>

No Data Available



Percent of Engine-On Time by Catalyst Temp<sup>2</sup>



Total energy into battery pack (kWh)<sup>4</sup>: 2,665  
 Total energy out of battery pack (kWh)<sup>4</sup>: 2,365  
 Battery round trip energy efficiency<sup>4</sup>: 89%