

HEV Fleet Testing



**2010 Honda
Insight**
VIN: 0141

Fleet Testing Results To Date

Operating Statistics

Distance Driven¹: 121,396
Average Trip Distance²: 11.5 mi
Stop Time with Engine Idling²: 85%
Trip Type City/Highway²: 83%/17%

Operating Performance

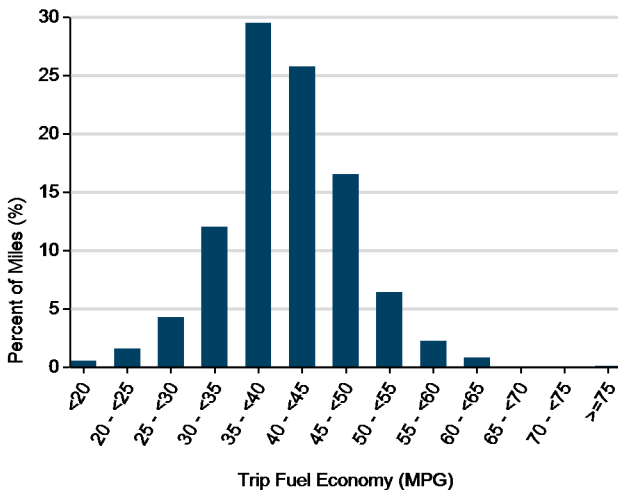
Cumulative MPG¹: 41.7

See HEV America Baseline Performance and Fleet Testing Fuel Economy fact sheets for more information on vehicle specifications and fuel usage reporting, available at <http://avt.inl.gov/>

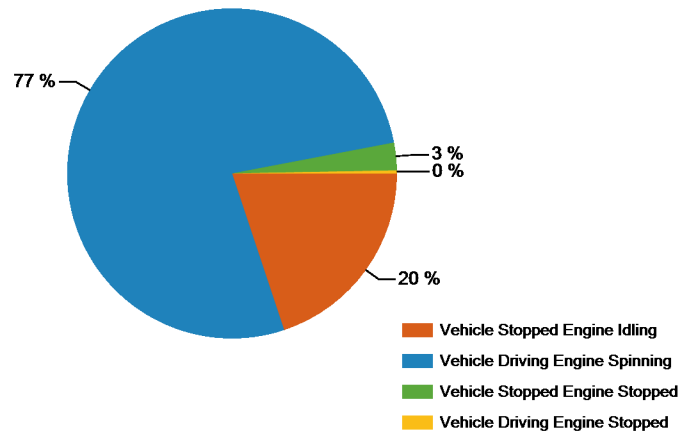
Test Notes

1. Calculated over the life of the vehicle based on odometer reading and fuel logs. More information available in Fleet Testing Fuel Economy sheet.
2. Calculated from electronic data logged over a subset of total miles traveled equal to 112,368 miles.
3. Fuel economy calculated for this figure using mass air flow over dynamic vehicle operation.
4. Calculated from battery power data logged over a subset of total miles traveled, equal to 95,991 miles.

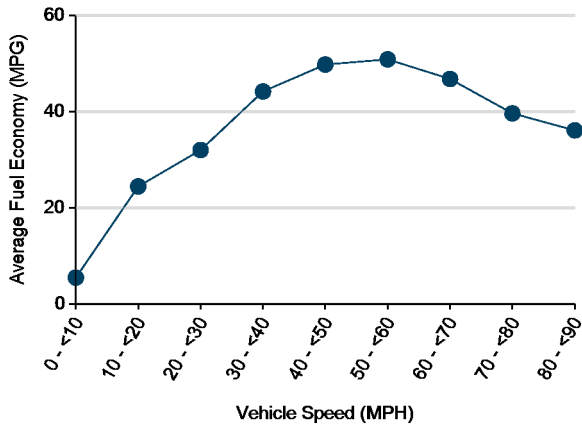
Distribution of Trip Fuel Economy^{2, 3}



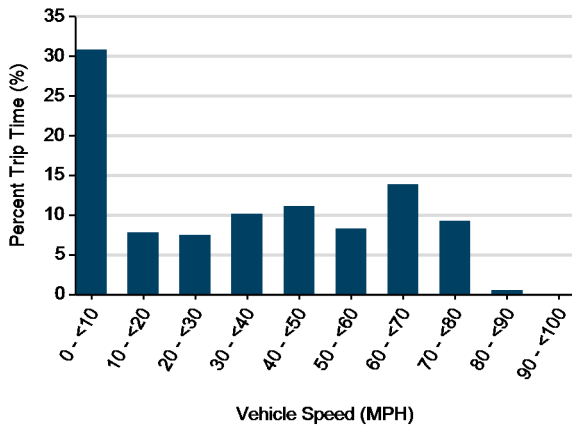
Percent of Drive Time by Operating Mode²



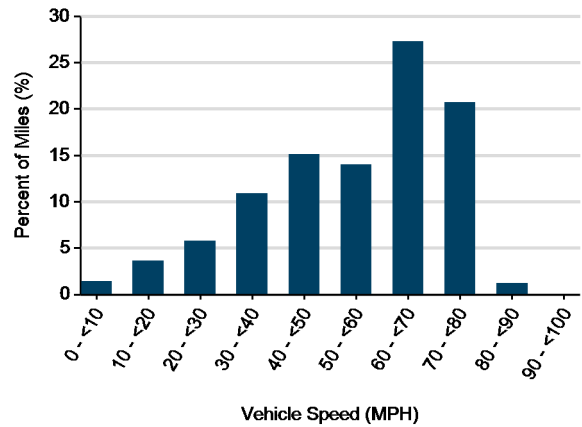
Average Fuel Economy at Speed^{2 3}



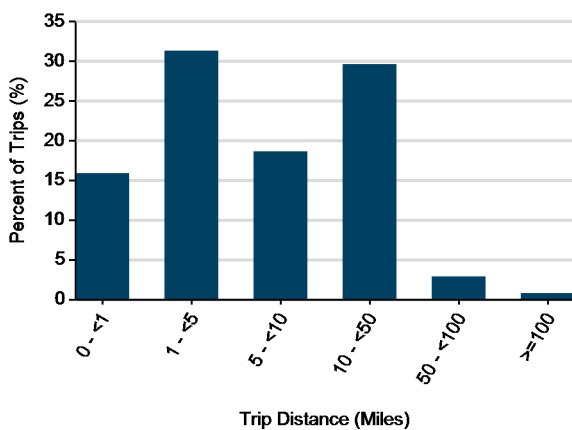
Distribution of Vehicle Speed²



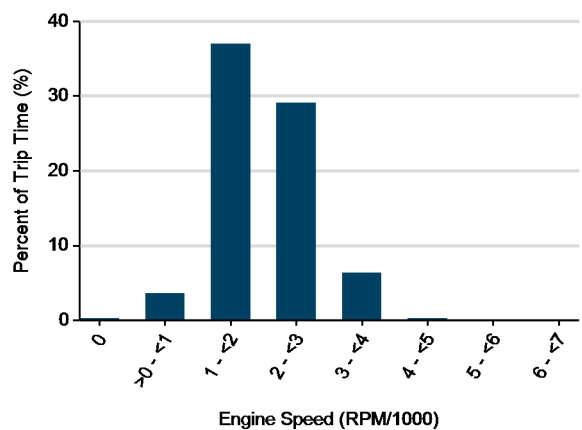
Distribution of Vehicle Speed²

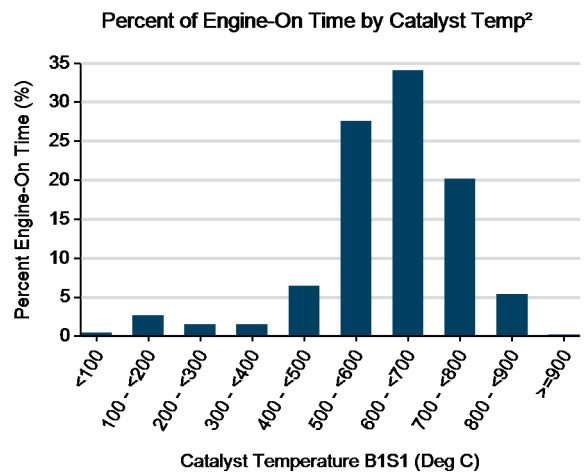
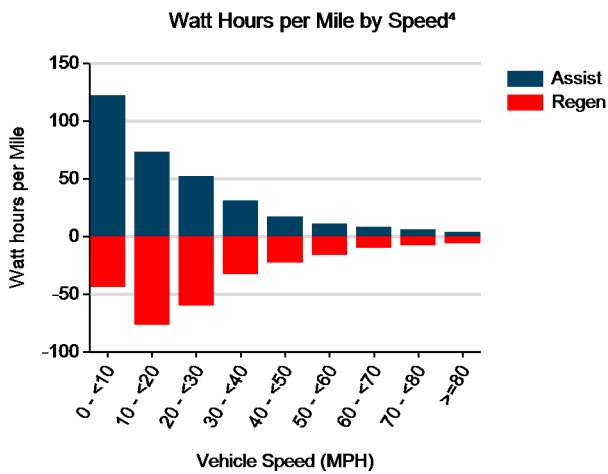
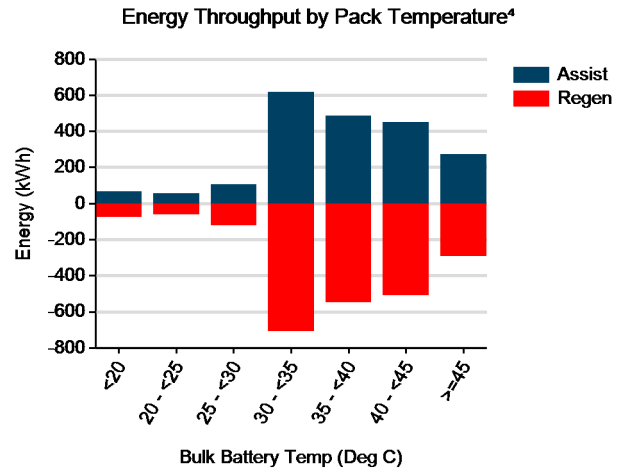
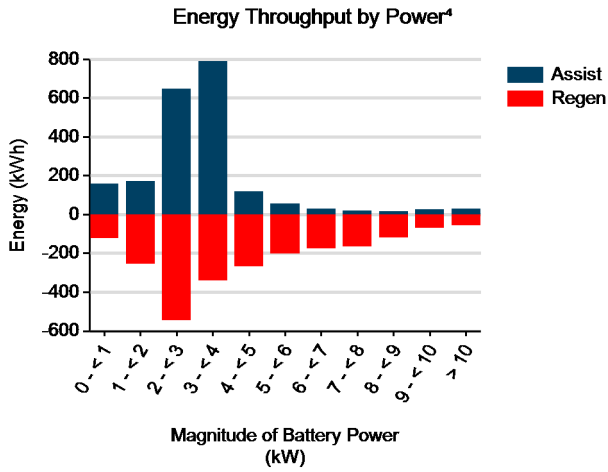


Distribution of Trip Distance²



Distribution of Engine Speed When Vehicle is Moving²





Total energy into battery pack (kWh)⁴: 2,321
 Total energy out of battery pack (kWh)⁴: 2,056
 Battery round trip energy efficiency⁴: 89%