

HEV Fleet Testing



**2010 Ford
Fusion**
VIN: 4757

Fleet Testing Results To Date

Operating Statistics

Distance Driven¹: 145,595
Average Trip Distance²: 11.3 mi
Stop Time with Engine Idling²: 11%
Trip Type City/Highway²: 82%/18%

Operating Performance

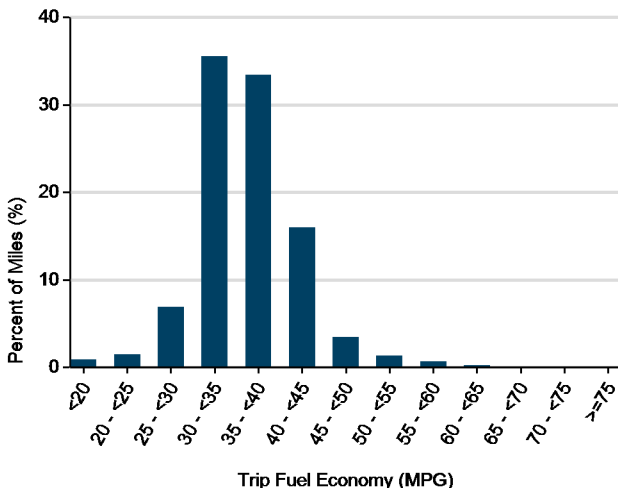
Cumulative MPG¹: 35.7

See HEV America Baseline Performance and Fleet Testing Fuel Economy fact sheets for more information on vehicle specifications and fuel usage reporting, available at <http://avt.inl.gov/>

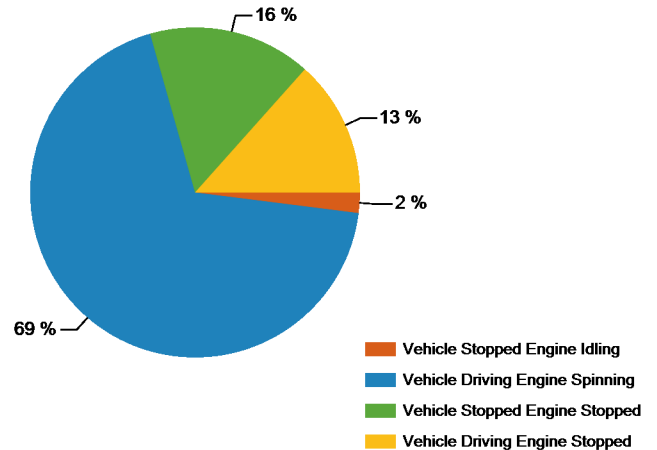
Test Notes

1. Calculated over the life of the vehicle based on odometer reading and fuel logs. More information available in Fleet Testing Fuel Economy sheet.
2. Calculated from electronic data logged over a subset of total miles traveled equal to 123,334 miles.
3. Fuel economy calculated for this figure using mass air flow over dynamic vehicle operation.
4. Calculated from battery current data logged over a subset of total miles traveled, equal to 121,297 miles.

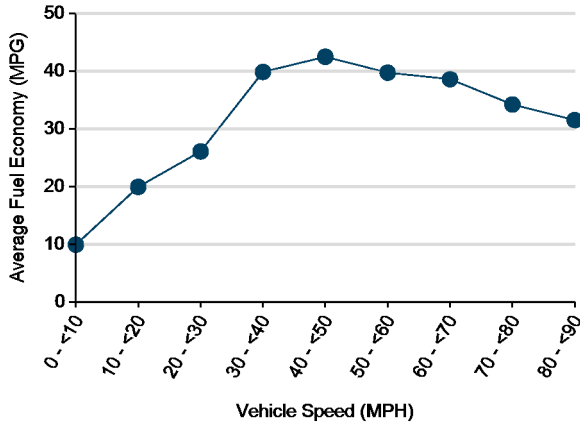
Distribution of Trip Fuel Economy^{2, 3}



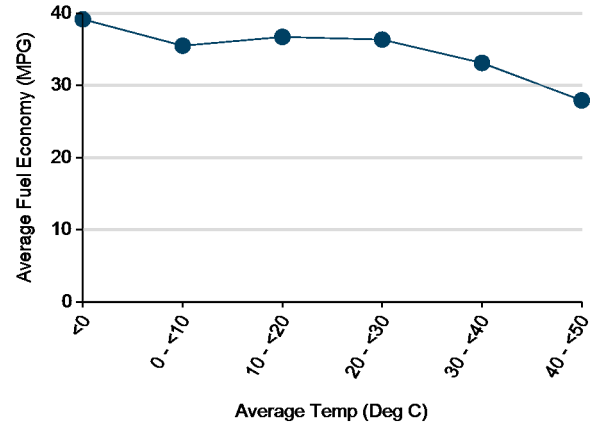
Percent of Drive Time by Operating Mode²



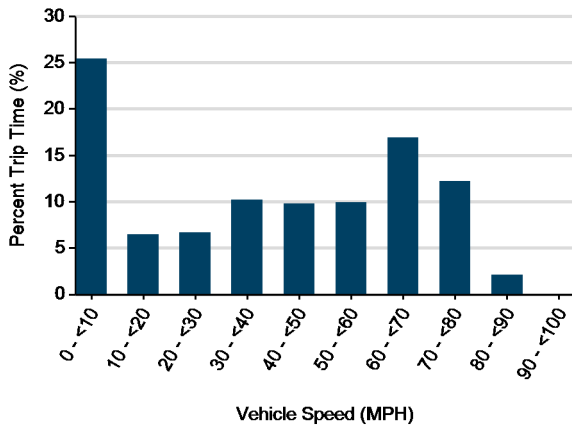
Average Fuel Economy at Speed^{2 3}



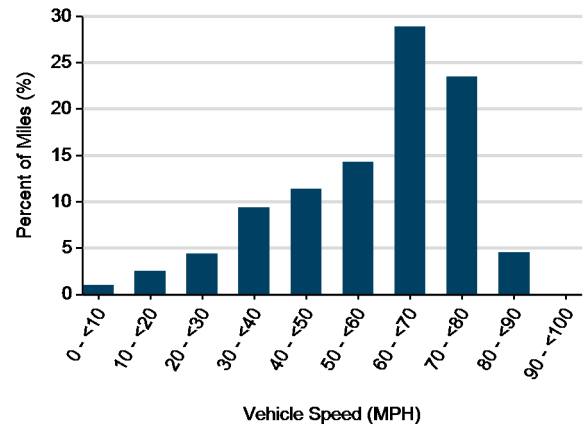
Average Fuel Economy vs Average Temp^{2 3}



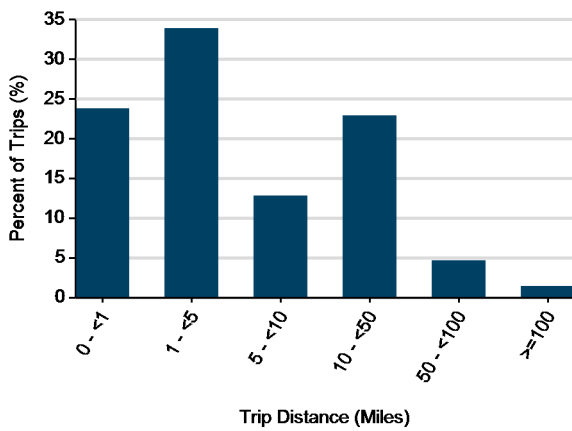
Distribution of Vehicle Speed²



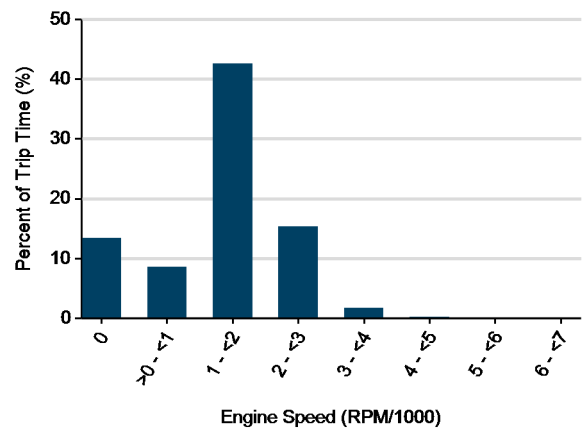
Distribution of Vehicle Speed²

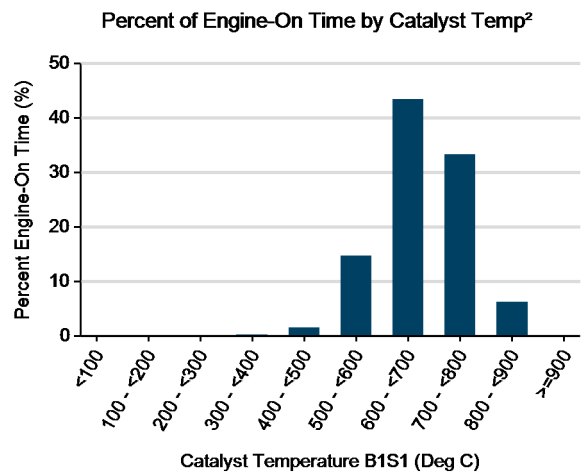
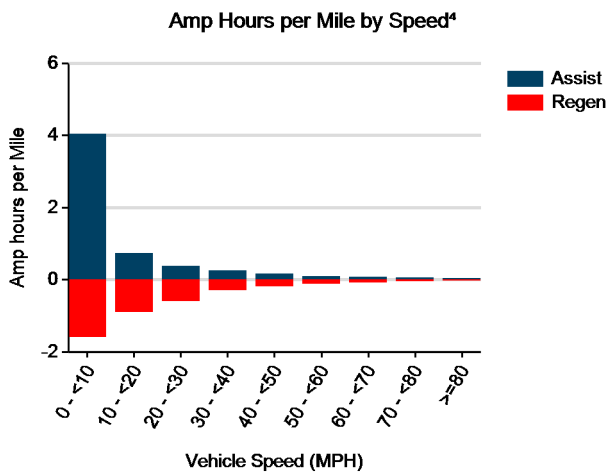
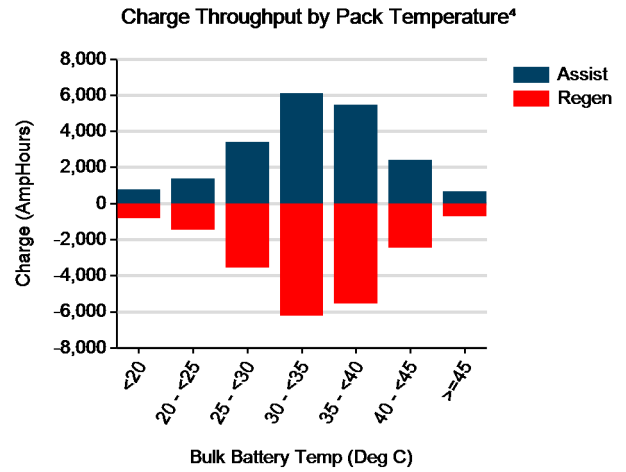
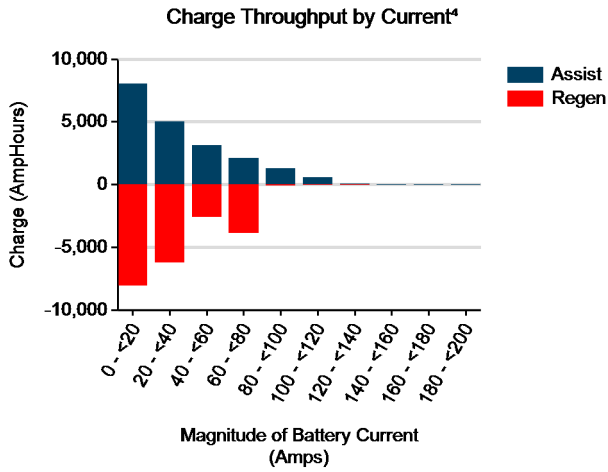


Distribution of Trip Distance²



Distribution of Engine Speed When Vehicle is Moving²





Total charge into battery pack (Ah)⁴: 20,828
 Total charge out of battery pack (Ah)⁴: 20,212
 Battery round trip efficiency⁴: 97%