

# HEV Fleet Testing



## 2010 Mercedes Benz

VIN: 295883

## Fleet Testing Results To Date

### Operating Statistics

Distance Driven<sup>1</sup>: 159,435  
 Average Trip Distance<sup>2</sup>: 16.0 mi  
 Stop Time with Engine Idling<sup>2</sup>: 66%  
 Trip Type City/Highway<sup>2</sup>: 76%/24%

### Operating Performance

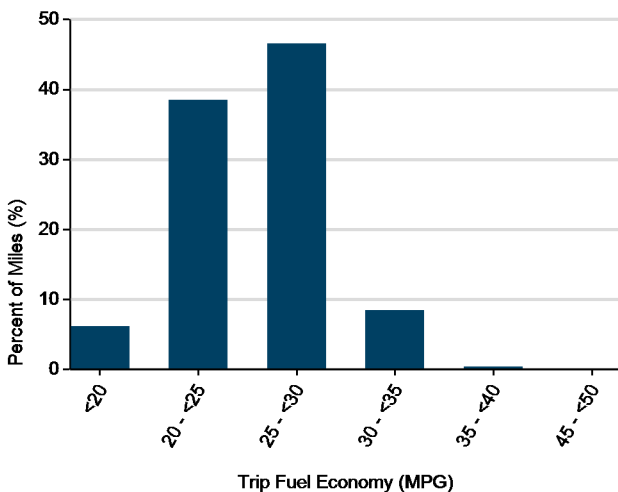
Cumulative MPG<sup>1</sup>: 25.5

*See HEV America Baseline Performance and Fleet Testing Fuel Economy fact sheets for more information on vehicle specifications and fuel usage reporting, available at <http://avt.inl.gov/>*

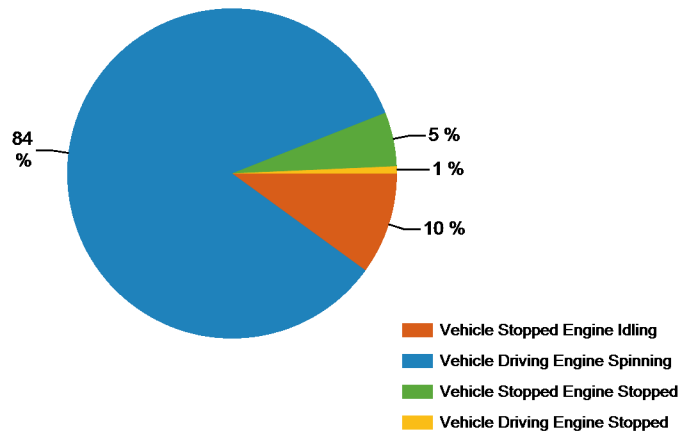
### Test Notes

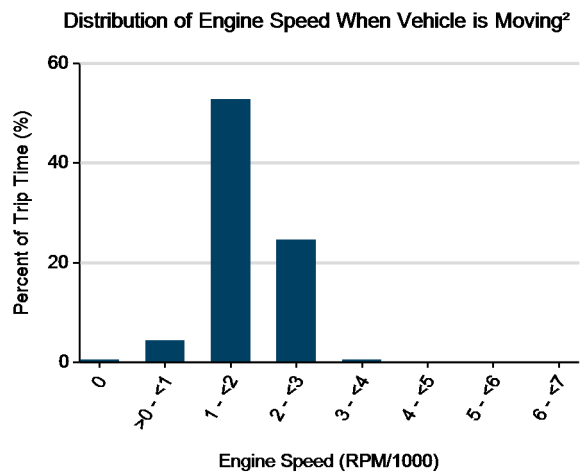
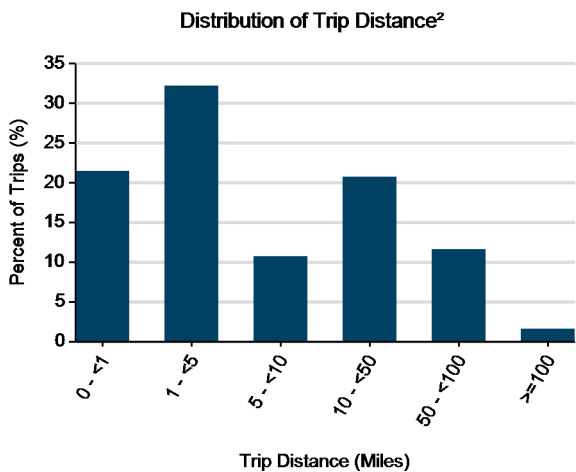
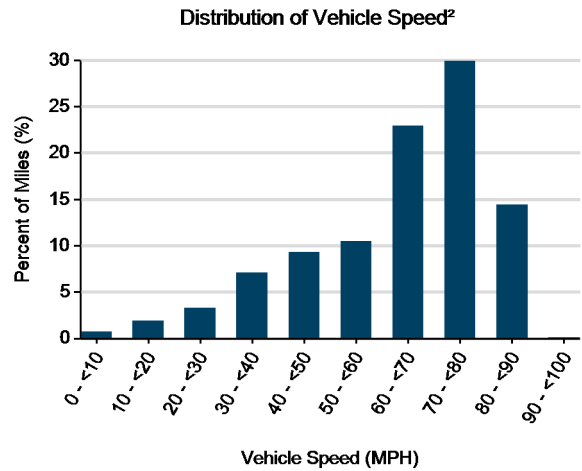
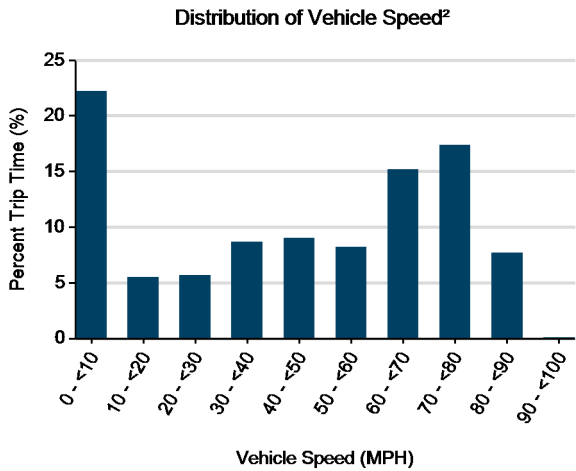
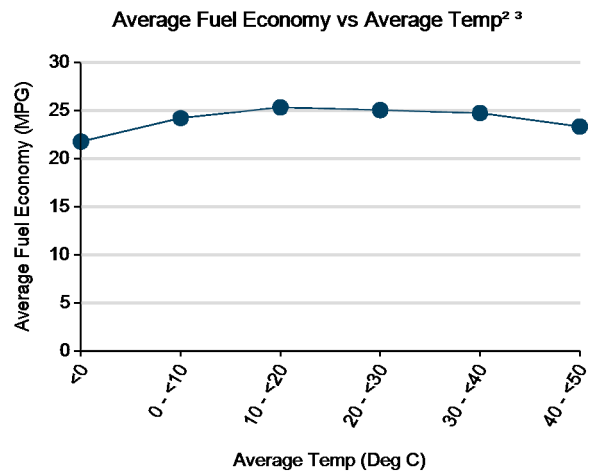
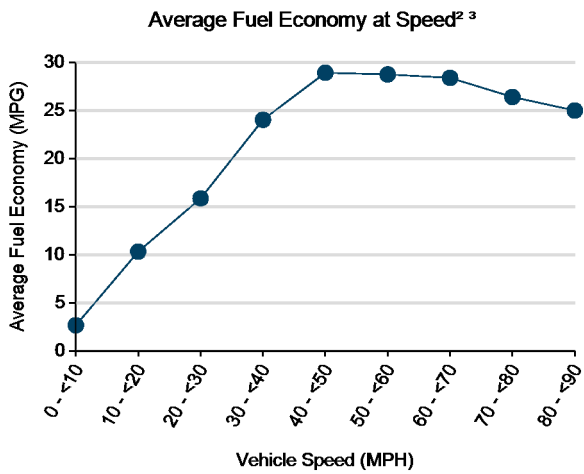
1. Calculated over the life of the vehicle based on odometer reading and fuel logs. More information available in Fleet Testing Fuel Economy sheet.
2. Calculated from electronic data logged over a subset of total miles traveled equal to 143,147 miles.
3. Fuel economy calculated for this figure using mass air flow over dynamic vehicle operation.
4. Calculated from battery current data logged over a subset of total miles traveled, equal to 140,763 miles.

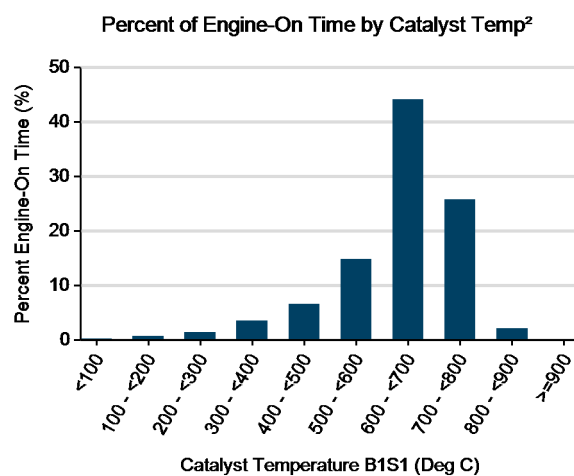
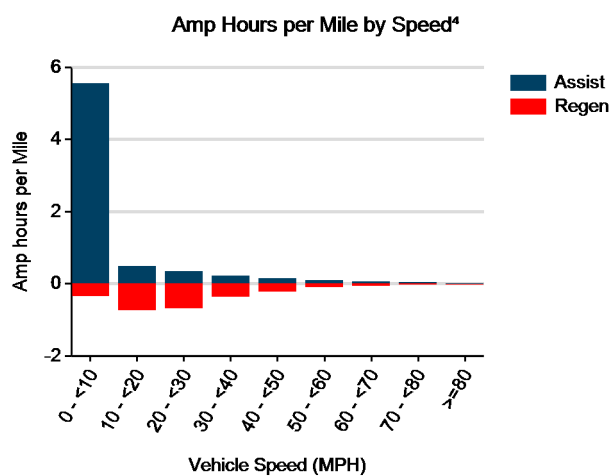
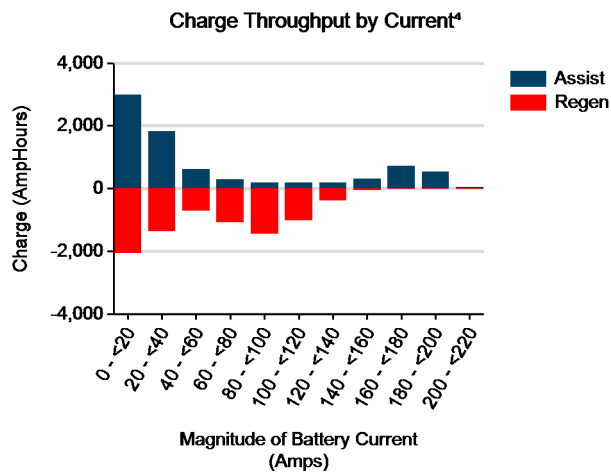
Distribution of Trip Fuel Economy<sup>2, 3</sup>



Percent of Drive Time by Operating Mode<sup>2</sup>







Total charge into battery pack (Ah)<sup>4</sup>: 18,850  
 Total charge out of battery pack (Ah)<sup>4</sup>: 18,420  
 Battery round trip efficiency<sup>4</sup>: 98%