

# Operating Costs

## 2015 Honda Accord

VIN: 1HGCR6F39FA005774



### Vehicle Specifications

- Engine:** 16-Valve DOHC i-VTEC
- Electric Motor:** PM AC Synchronous
- Battery:** Lithium-Ion
- Class:** Sedan
- Seatbelt Positions:** Five
- Payload:** 850 lb

See Vehicle Specifications and Testing Results for more information

### Fleet Performance

#### Operating Cost:

- Purchase Cost: \$33,982<sup>1</sup>
- Purchase Date: March 2015
- Resale Value as of 11/2016: \$12,133<sup>2</sup>
- Sale Price: In Operation
- Maintenance Cost: \$0.02/mile
- Operating Cost: \$0.09/mile<sup>3</sup>
- Total Ownership Cost: \$0.32/mile<sup>4</sup>

#### Operating Performance:

- Total miles driven: 106,861
- Cumulative MPG: 38.3

#### Major Operations & Maintenance Events:

<sup>1</sup>Purchase includes dealer price with options plus taxes. It does not include title, license, registration, extended warranty or delivery fee costs.

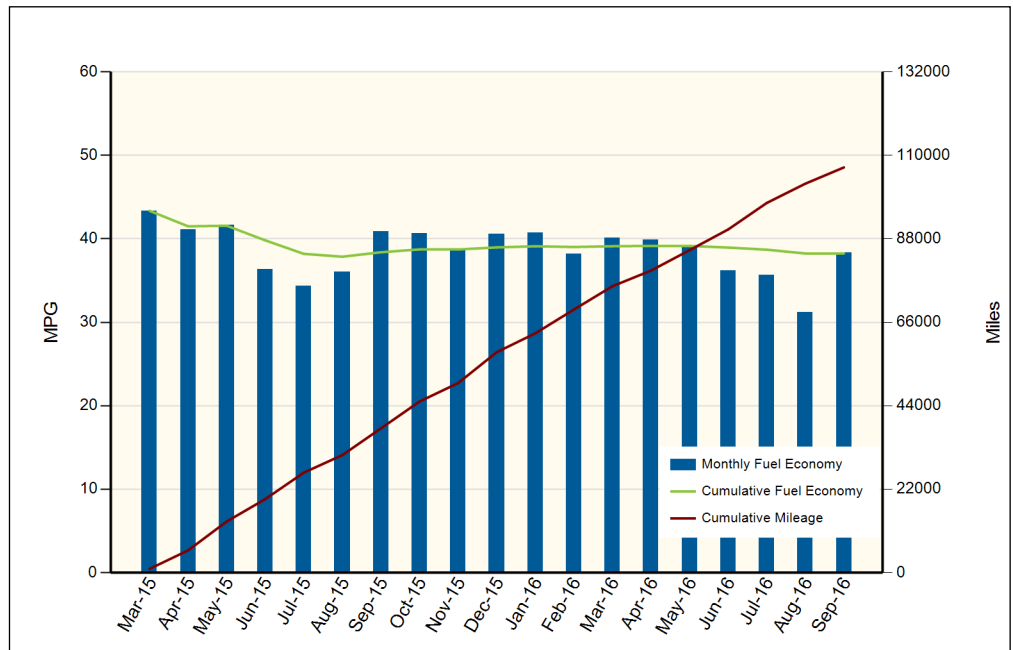
<sup>2</sup>Per Kelley Blue Book private resale estimate, [www.kbb.com](http://www.kbb.com).

<sup>3</sup>Operating costs includes insurance, fuel, and registration costs

<sup>4</sup>Total ownership includes maintenance, operating, and capital depreciation

### Description of Vehicle Usage:

This vehicle is operated by various commercial vehicle fleets throughout the Southwestern United States covering a mixture of city and highway routes. This vehicle is operated five to seven days a week functioning as a typical vehicle in the overall fleet.



Monthly MPG = (miles driven)/(gallons of fuel purchased). Monthly variation in reported MPG may occur due to the difference in fuel tank level at the beginning and end of the month