

Operating Costs

2015 Honda Accord

VIN: 1HGCR6F54FA005439



Vehicle Specifications

- Engine:** 16-Valve DOHC i-VTEC
- Electric Motor:** PM AC Synchronous
- Battery:** Lithium-Ion
- Class:** Sedan
- Seatbelt Positions:** Five
- Payload:** 850 lb

See Vehicle Specifications and Testing Results for more information

Fleet Performance

Operating Cost:

- Purchase Cost: \$31,744¹
- Purchase Date: February 2015
- Resale Value as of 11/2016: \$12,294²
- Sale Price: In Operation
- Maintenance Cost: \$0.03/mile
- Operating Cost: \$0.09/mile³
- Total Ownership Cost: \$0.30/mile⁴

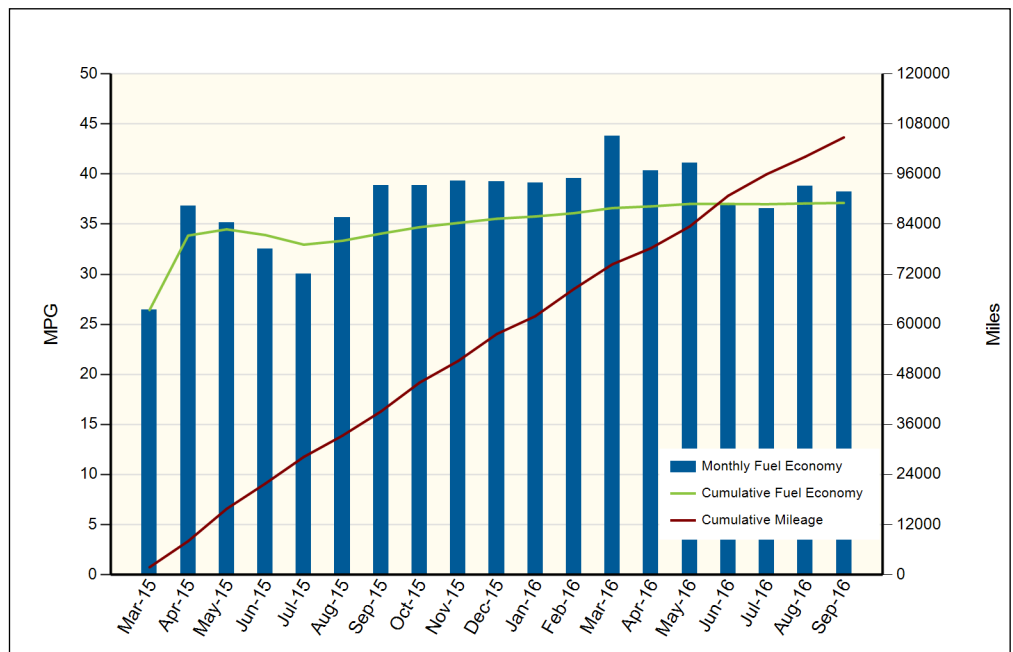
Operating Performance:

- Total miles driven: 105,017
- Cumulative MPG: 37.1

Major Operations & Maintenance Events:

Description of Vehicle Usage:

This vehicle is operated by various commercial vehicle fleets throughout the Southwestern United States covering a mixture of city and highway routes. This vehicle is operated five to seven days a week functioning as a typical vehicle in the overall fleet.



Monthly MPG = (miles driven)/(gallons of fuel purchased). Monthly variation in reported MPG may occur due to the difference in fuel tank level at the beginning and end of the month

¹Purchase includes dealer price with options plus taxes. It does not include title, license, registration, extended warranty or delivery fee costs.

²Per Kelley Blue Book private resale estimate, www.kbb.com.

³Operating costs includes insurance, fuel, and registration costs

⁴Total ownership includes maintenance, operating, and capital depreciation