

# Operating Costs

## 2014 Volkswagen Jetta SE

VIN: 3VW637AJ3EM232708



### Vehicle Specifications

**Engine:** 1.4 L, Inline 4-Cylinder

**Electric Motor:** 20 kW

**Battery:** Lithium-ion

**Class:** Compact

**Seatbelt Positions:** Five

**Payload:** 1109 lbs

See Vehicle Specifications and Testing Results for more information

### Fleet Performance

#### Operating Cost:

Purchase Cost: \$30,640<sup>1</sup>

Purchase Date: December 2013

Resale Value as of : \$0<sup>2</sup>

Sale Price: \$2,000

Maintenance Cost: \$0.05/mile

Operating Cost: \$0.12/mile<sup>3</sup>

Total Ownership Cost: \$0.43/mile<sup>4</sup>

#### Operating Performance:

Total miles driven: 124,700

Cumulative MPG: 35.7

#### Major Operations & Maintenance Events:

Replaced mechatronic unit @ 84,477 mi

Cost: \$2,106.22

Bad transmission @ 124,812 mi - EOT

<sup>1</sup>Purchase includes dealer price with options plus taxes. It does not include title, license, registration, extended warranty or delivery fee costs.

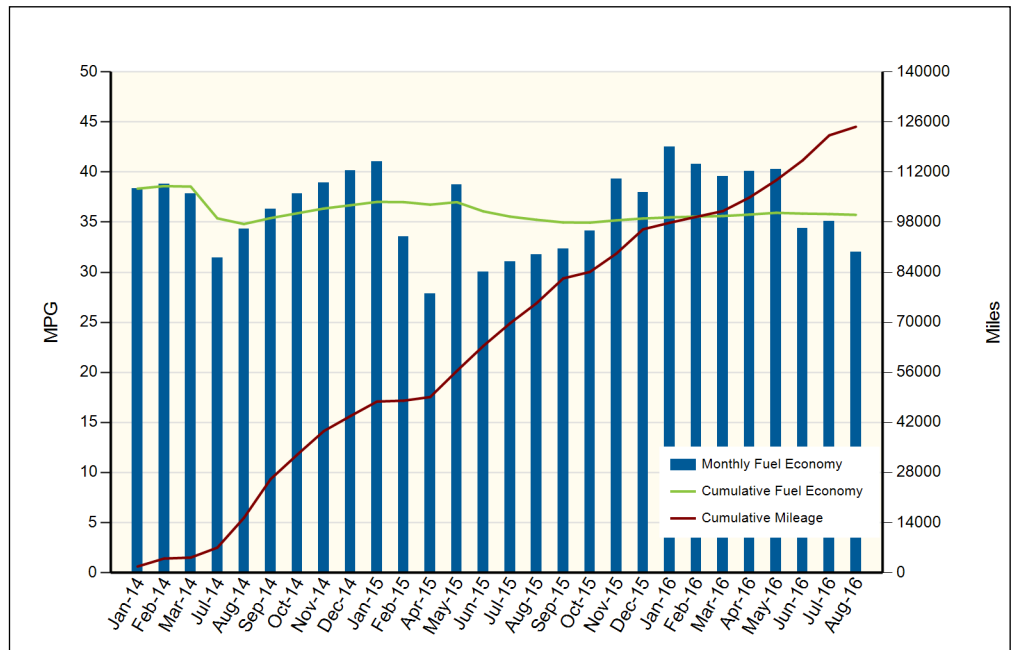
<sup>2</sup>Per Kelley Blue Book private resale estimate, www.kbb.com.

<sup>3</sup>Operating costs includes insurance, fuel, and registration costs

<sup>4</sup>Total ownership includes maintenance, operating, and capital depreciation

### Description of Vehicle Usage:

This vehicle is operated by various commercial vehicle fleets throughout the Southwestern United States covering a mixture of city and highway routes. This vehicle is operated five to seven days a week functioning as a typical vehicle in the overall fleet.



Monthly MPG = (miles driven)/(gallons of fuel purchased). Monthly variation in reported MPG may occur due to the difference in fuel tank level at the beginning and end of the month