

Operating Costs

2013 Chevrolet Malibu Eco

VIN: 1G11D5RR8DF107249



Vehicle Specifications

Engine: 2.4 L, Inline 4-Cylinder

Electric Motor: 15 kW

Battery: Lithium-ion

Class: Midsize

Seatbelt Positions: Five

Payload: 750 lbs

See Vehicle Specifications and Testing Results for more information

Fleet Performance

Operating Cost:

Purchase Cost: \$26,791¹

Purchase Date: November 2012

Resale Value as of 11/2016: \$2,686²

Sale Price: In Operation

Maintenance Cost: \$0.04/mile

Operating Cost: \$0.15/mile³

Total Ownership Cost: \$0.32/mile⁴

Operating Performance:

Total miles driven: 185,093

Cumulative MPG: 26.2

Major Operations & Maintenance Events:

Replaced a/c compressor @ 99,428 mi

Cost: \$1020.87

Replaced oil pan, front engine cover

gasket, and front crank seal due to oil leak

@ 143,413 mi Cost: \$1,105

¹Purchase includes dealer price with options plus taxes. It does not include title, license, registration, extended warranty or delivery fee costs.

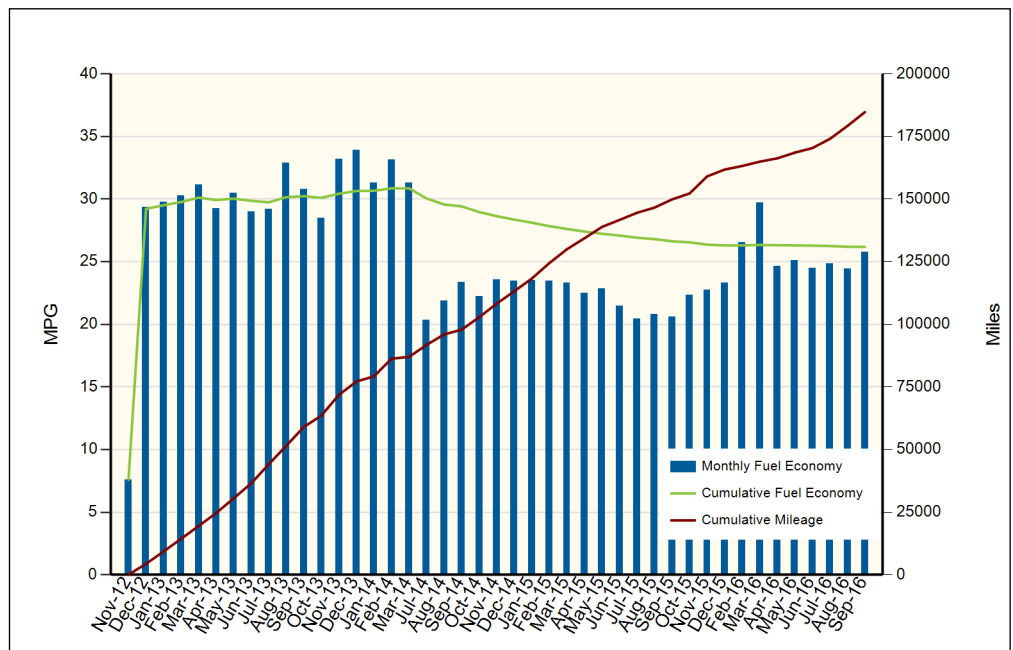
²Per Kelley Blue Book private resale estimate, www.kbb.com.

³Operating costs includes insurance, fuel, and registration costs

⁴Total ownership includes maintenance, operating, and capital depreciation

Description of Vehicle Usage:

This vehicle is operated by various commercial vehicle fleets throughout the Southwestern United States covering a mixture of city and highway routes. This vehicle is operated five to seven days a week functioning as a typical vehicle in the overall fleet.



Monthly MPG = (miles driven)/(gallons of fuel purchased). Monthly variation in reported MPG may occur due to the difference in fuel tank level at the beginning and end of the month

NOTE: The MPG has dropped sharply in July 2014 due to this vehicle being used for a Taxi Service in Phoenix, AZ.