

# Operating Costs

## 2013 Chevrolet Malibu Eco

VIN: 1G11D5RR0DF106791



### Vehicle Specifications

**Engine:** 2.4 L, Inline 4-Cylinder

**Electric Motor:** 15 kW

**Battery:** Lithium-ion

**Class:** Midsize

**Seatbelt Positions:** Five

**Payload:** 750 lbs

See Vehicle Specifications and Testing Results for more information

### Fleet Performance

#### Operating Cost:

Purchase Cost: \$26,791<sup>1</sup>

Purchase Date: November 2012

Resale Value as of 11/2016: \$2,917<sup>2</sup>

Sale Price: In Operation

Maintenance Cost: \$0.03/mile

Operating Cost: \$0.15/mile<sup>3</sup>

Total Ownership Cost: \$0.31/mile<sup>4</sup>

#### Operating Performance:

Total miles driven: 176,808

Cumulative MPG: 27.8

#### Major Operations & Maintenance Events:

Rebalanced shaft tensioner and replaced stretched timing chain and chain guides @ 125,299 mi Cost: \$1,174

Replaced catalytic converter, wiring and hood strut @ 157,434 mi Cost: \$1,041.31

<sup>1</sup>Purchase includes dealer price with options plus taxes. It does not include title, license, registration, extended warranty or delivery fee costs.

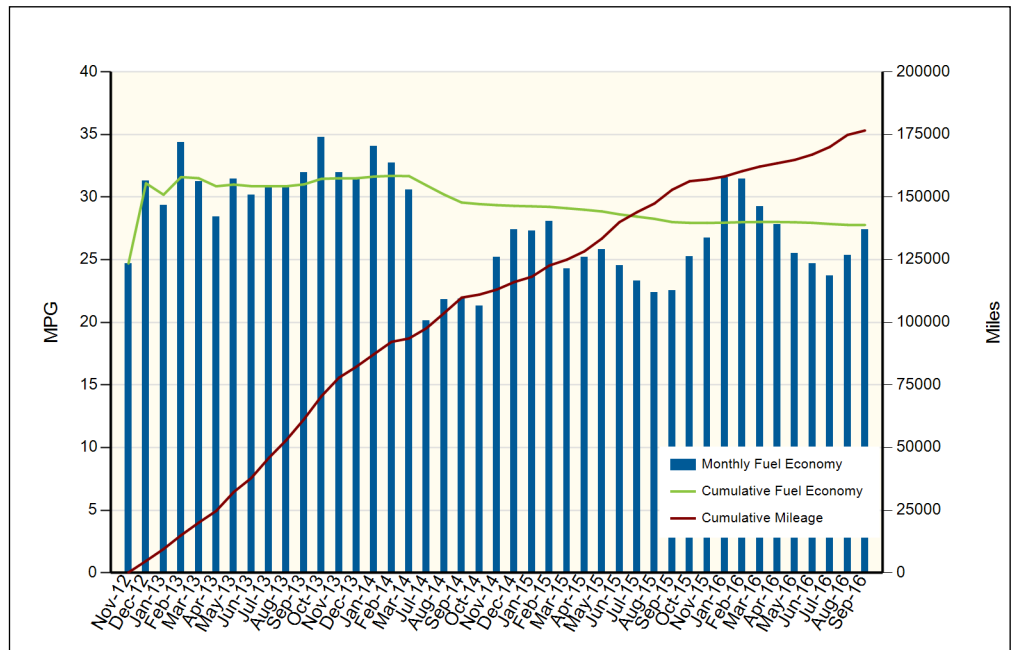
<sup>2</sup>Per Kelley Blue Book private resale estimate, www.kbb.com.

<sup>3</sup>Operating costs includes insurance, fuel, and registration costs

<sup>4</sup>Total ownership includes maintenance, operating, and capital depreciation

### Description of Vehicle Usage:

This vehicle is operated by various commercial vehicle fleets throughout the Southwestern United States covering a mixture of city and highway routes. This vehicle is operated five to seven days a week functioning as a typical vehicle in the overall fleet.



Monthly MPG = (miles driven)/(gallons of fuel purchased). Monthly variation in reported MPG may occur due to the difference in fuel tank level at the beginning and end of the month

NOTE: The MPG has dropped sharply in July 2014 due to this vehicle being used for a Taxi Service in Phoenix, AZ.