

Operating Costs



2013 Chevrolet Malibu Eco

VIN: 1G11D5SR8DF133800

Vehicle Specifications

Engine: 2.4 L, Inline 4-Cylinder

Electric Motor: 15 kW

Battery: Lithium-ion

Class: Midsize

Seatbelt Positions: Five

Payload: 750 lbs

See Vehicle Specifications and Testing Results for more information

Fleet Performance

Operating Cost:

Purchase Cost: \$26,799¹

Purchase Date: November 2012

Resale Value as of 11/2016: \$2,798²

Sale Price: In Operation

Maintenance Cost: \$0.03/mile

Operating Cost: \$0.15/mile³

Total Ownership Cost: \$0.30/mile⁴

Operating Performance:

Total miles driven: 184,018

Cumulative MPG: 28.8

Major Operations & Maintenance Events:

Replaced water pump & balanced shaft chain tensioners @ 137,831 mi Cost: \$1,136

¹Purchase includes dealer price with options plus taxes. It does not include title, license, registration, extended warranty or delivery fee costs.

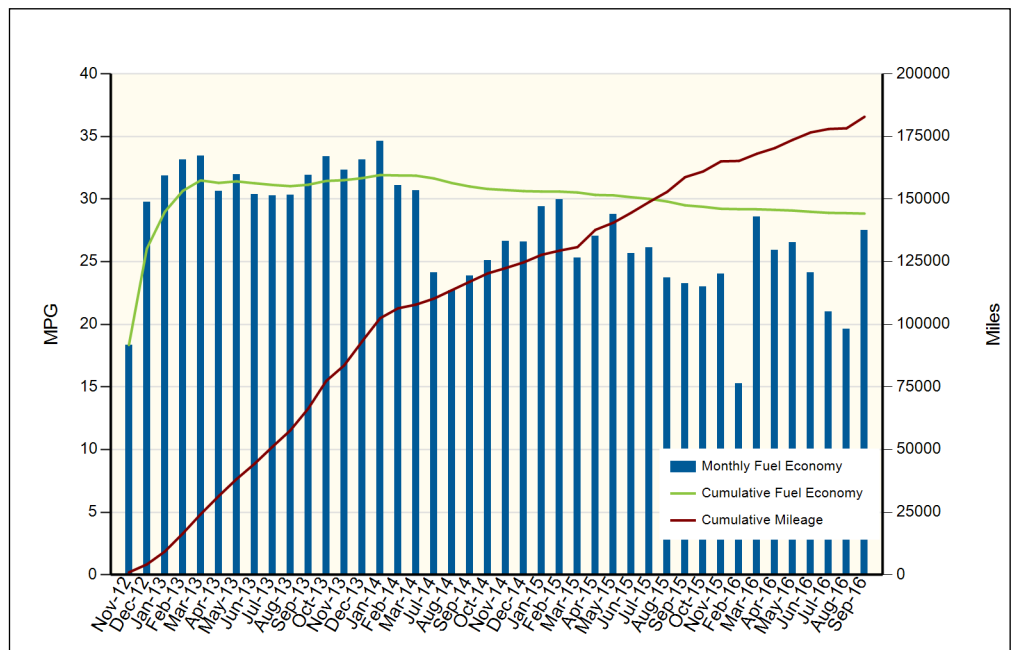
²Per Kelley Blue Book private resale estimate, www.kbb.com.

³Operating costs includes insurance, fuel, and registration costs

⁴Total ownership includes maintenance, operating, and capital depreciation

Description of Vehicle Usage:

This vehicle is operated by various commercial vehicle fleets throughout the Southwestern United States covering a mixture of city and highway routes. This vehicle is operated five to seven days a week functioning as a typical vehicle in the overall fleet.



Monthly MPG = (miles driven)/(gallons of fuel purchased). Monthly variation in reported MPG may occur due to the difference in fuel tank level at the beginning and end of the month

NOTE: The MPG has dropped sharply in July 2014 due to this vehicle being used for a Taxi Service in Phoenix, AZ.