

Operating Costs

2013 Ford C-Max SE
 VIN: 1FADP5AU9DL535138



Vehicle Specifications

- Engine:** 2.0 L, Inline 4-Cylinder
- Electric Motor:** 88 kW
- Battery:** Lithium-ion
- Class:** Large Car
- Seatbelt Positions:** Five
- Payload:** 825 lbs

See Vehicle Specifications and Testing Results for more information

Fleet Performance

Operating Cost:

- Purchase Cost: \$27,355¹
- Purchase Date: December 2013
- Resale Value as of 11/2016: \$2,627²
- Sale Price: In Operation
- Maintenance Cost: \$0.02/mile
- Operating Cost: \$0.19/mile³
- Total Ownership Cost: \$0.35/mile⁴

Operating Performance:

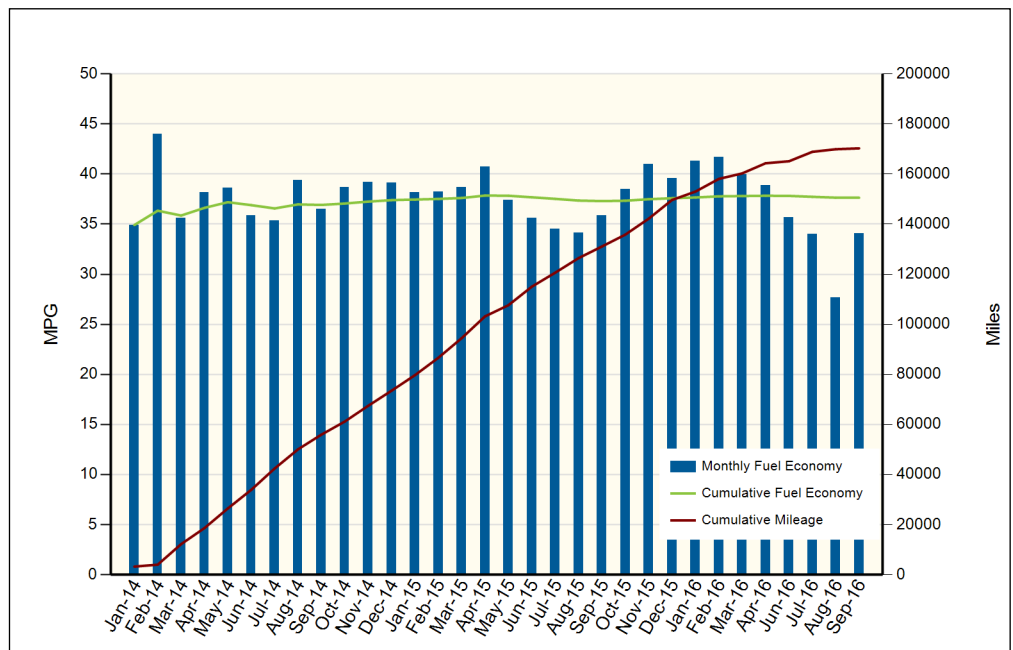
- Total miles driven: 170,285
- Cumulative MPG: 37.6

Major Operations & Maintenance Events:

Battery damaged during ICD testing, replaced battery pack with vehicle #2158 battery @ 164,510 mi

Description of Vehicle Usage:

This vehicle is operated by various commercial vehicle fleets throughout the Southwestern United States covering a mixture of city and highway routes. This vehicle is operated five to seven days a week functioning as a typical vehicle in the overall fleet.



Monthly MPG = (miles driven)/(gallons of fuel purchased). Monthly variation in reported MPG may occur due to the difference in fuel tank level at the beginning and end of the month

¹Purchase includes dealer price with options plus taxes. It does not include title, license, registration, extended warranty or delivery fee costs.

²Per Kelley Blue Book private resale estimate, www.kbb.com.

³Operating costs includes insurance, fuel, and registration costs

⁴Total ownership includes maintenance, operating, and capital depreciation