

# Operating Costs

**2013 Ford C-Max SE**  
VIN: 1FADP5AU0DL532158



### Vehicle Specifications

- Engine:** 2.0 L, Inline 4-Cylinder
- Electric Motor:** 88 kW
- Battery:** Lithium-ion
- Class:** Large Car
- Seatbelt Positions:** Five
- Payload:** 825 lbs

See Vehicle Specifications and Testing Results for more information

### Fleet Performance

#### Operating Cost:

- Purchase Cost: \$27,311<sup>1</sup>
- Purchase Date: December 2013
- Resale Value as of : \$0<sup>2</sup>
- Sale Price: \$9,510
- Maintenance Cost: \$0.05/mile
- Operating Cost: \$0.11/mile<sup>3</sup>
- Total Ownership Cost: \$0.43/mile<sup>4</sup>

#### Operating Performance:

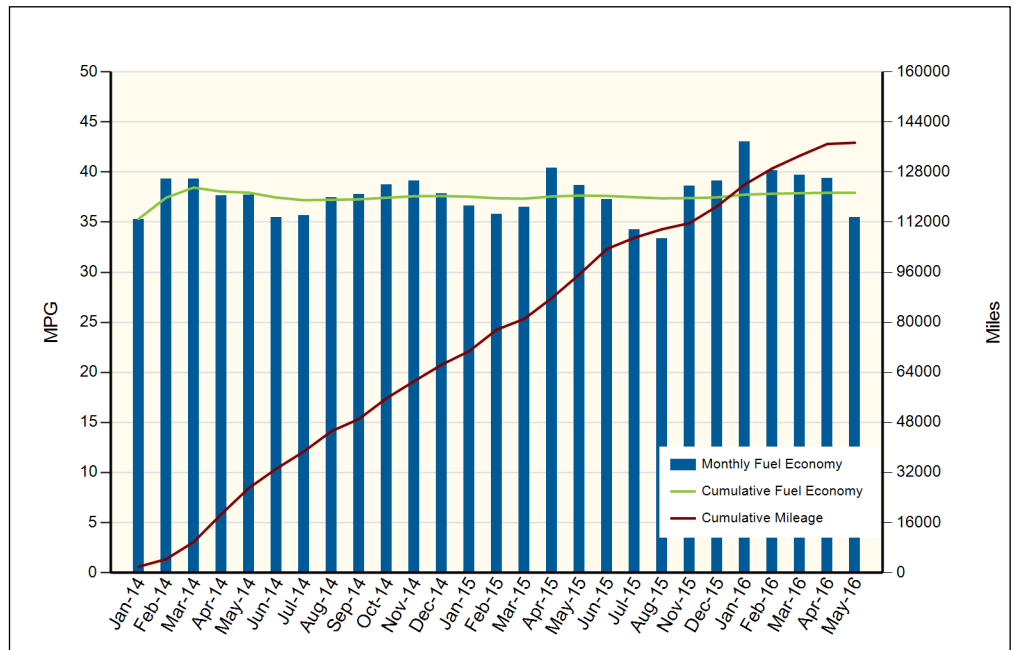
- Total miles driven: 137,392
- Cumulative MPG: 37.9

#### Major Operations & Maintenance Events:

Replaced transmission @109,757 mi Cost: \$3,889.19  
Vehicle was totaled

### Description of Vehicle Usage:

This vehicle is operated by various commercial vehicle fleets throughout the Southwestern United States covering a mixture of city and highway routes. This vehicle is operated five to seven days a week functioning as a typical vehicle in the overall fleet.



Monthly MPG = (miles driven)/(gallons of fuel purchased). Monthly variation in reported MPG may occur due to the difference in fuel tank level at the beginning and end of the month

<sup>1</sup>Purchase includes dealer price with options plus taxes. It does not include title, license, registration, extended warranty or delivery fee costs.

<sup>2</sup>Per Kelley Blue Book private resale estimate, www.kbb.com.

<sup>3</sup>Operating costs includes insurance, fuel, and registration costs

<sup>4</sup>Total ownership includes maintenance, operating, and capital depreciation