

Operating Costs



2013 Honda Civic
VIN: 19XFB4F25DE001260

Vehicle Specifications

- Engine:** 1.5 L, Inline 4-Cylinder
- Electric Motor:** 17 kW
- Battery:** Lithium-ion
- Class:** Compact
- Seatbelt Positions:** Five
- Payload:** 982 lbs

See Vehicle Specifications and Testing Results for more information

Fleet Performance

Operating Cost:

- Purchase Cost: \$26,551¹
- Purchase Date: April 2013
- Resale Value as of : \$0²
- Sale Price: \$3,100
- Maintenance Cost: \$0.03/mile
- Operating Cost: \$0.10/mile³
- Total Ownership Cost: \$0.27/mile⁴

Operating Performance:

- Total miles driven: 205,036
- Cumulative MPG: 39.3

Major Operations & Maintenance Events:

End of Test

¹Purchase includes dealer price with options plus taxes. It does not include title, license, registration, extended warranty or delivery fee costs.

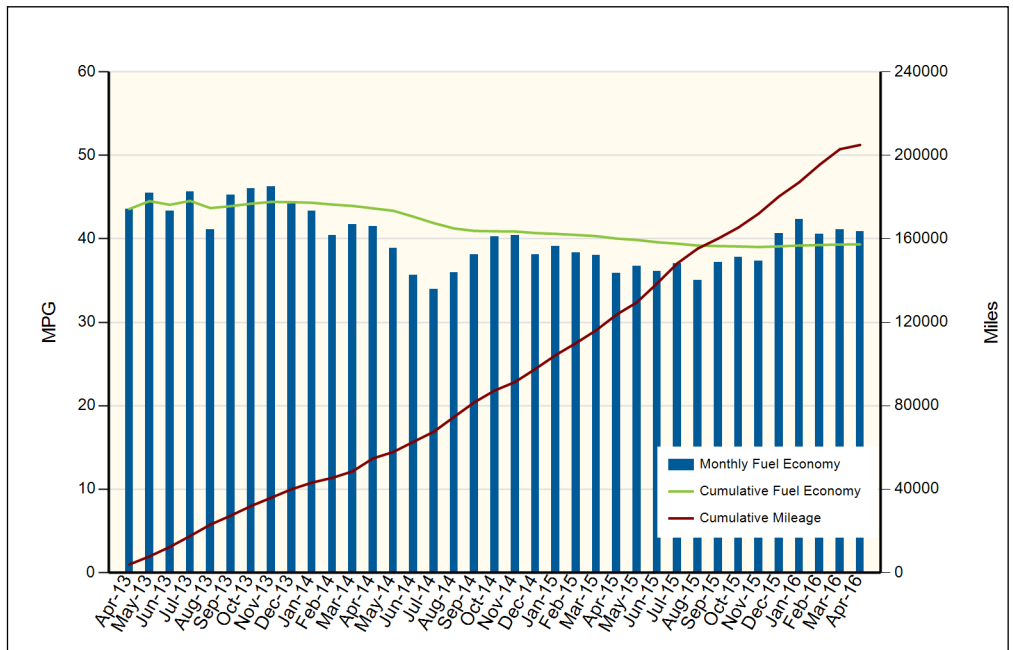
²Per Kelley Blue Book private resale estimate, www.kbb.com.

³Operating costs includes insurance, fuel, and registration costs

⁴Total ownership includes maintenance, operating, and capital depreciation

Description of Vehicle Usage:

This vehicle is operated by various commercial vehicle fleets throughout the Southwestern United States covering a mixture of city and highway routes. This vehicle is operated five to seven days a week functioning as a typical vehicle in the overall fleet.



Monthly MPG = (miles driven)/(gallons of fuel purchased). Monthly variation in reported MPG may occur due to the difference in fuel tank level at the beginning and end of the month