

Operating Costs



2013 Honda Civic
VIN: 19XFB4F27DE000594

Vehicle Specifications

- Engine:** 1.5 L, Inline 4-Cylinder
- Electric Motor:** 17 kW
- Battery:** Lithium-ion
- Class:** Compact
- Seatbelt Positions:** Five
- Payload:** 982 lbs

See Baseline Performance Fact Sheet for more information

Fleet Performance

Operating Cost:

- Purchase Cost: \$26,551¹
- Purchase Date: March 2013
- Resale Value as of : \$0²
- Sale Price: \$10,000
- Maintenance Cost: \$0.02/mile
- Operating Cost: \$0.13/mile³
- Total Ownership Cost: \$0.44/mile⁴

Operating Performance:

- Total miles driven: 125,526
- Cumulative MPG: 39.2

Major Operations & Maintenance Events:

Vehicle was totaled

¹Purchase includes dealer price with options plus taxes. It does not include title, license, registration, extended warranty or delivery fee costs.

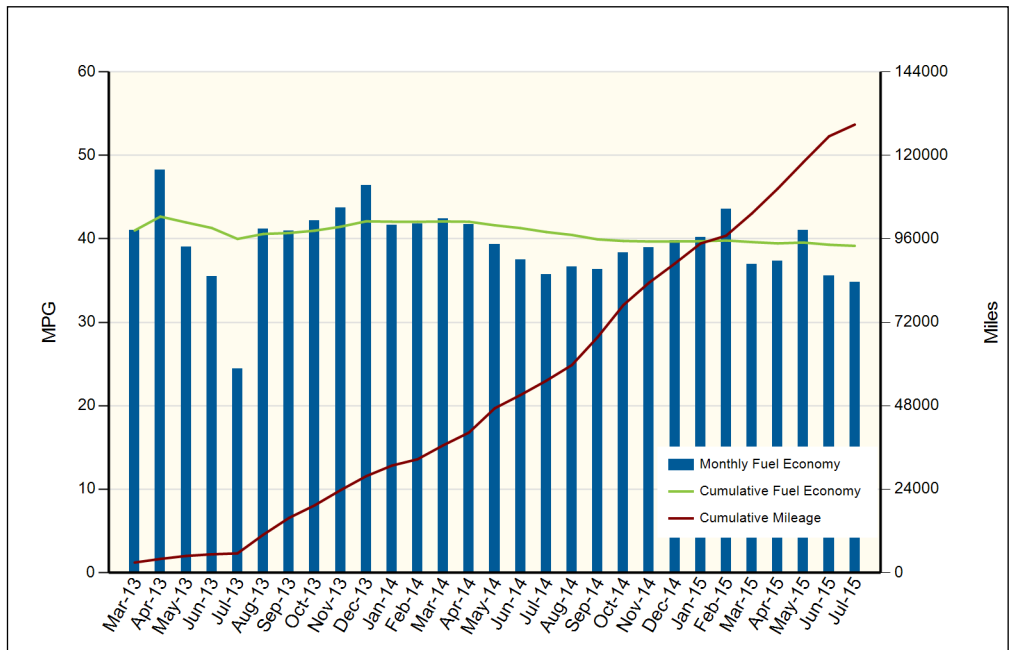
²Per Kelley Blue Book private resale estimate, www.kbb.com.

³Operating costs includes insurance, fuel, and registration costs

⁴Total ownership includes maintenance, operating, and capital depreciation

Description of Vehicle Usage:

This vehicle is operated by various commercial vehicle fleets throughout the Southwestern United States covering a mixture of city and highway routes. This vehicle is operated five to seven days a week functioning as a typical vehicle in the overall fleet.



Monthly MPG = (miles driven)/(gallons of fuel purchased). Monthly variation in reported MPG may occur due to the difference in fuel tank level at the beginning and end of the month