

HEV Fleet Testing - Summary Fact Sheet

Advanced Vehicle Testing Activity



2010 Toyota Prius

VIN# JTDKN3DU2A5010462

Vehicle Specifications

- Engine:** 1.8 L 4-cylinder
- Electric Motor:** 60 kW
- Battery:** NiMH
- Seatbelt Positions:** Five
- Payload:** 885 lbs
- Features:**
 - Regenerative braking
 - Traction control

Fleet Performance

Operating Cost:

- Purchase Cost: \$29,174 (7/09)*
- Kelley Blue Book: n/a
- Sale Price: \$4,950 (4/13)
- Maintenance Cost: \$0.02/mile
- Operating Cost: \$0.11/mile**
- Total Ownership Cost: \$0.28/mile

Description:

This vehicle is operated throughout the valley of Phoenix, Arizona by EZ Messenger, a legal document courier business. It is operated five days a week, transferring documents between courts, law offices, and medical facilities on city streets and urban freeways.

See HEVAmerica Baseline Performance Fact Sheet for more information

Operating Performance:

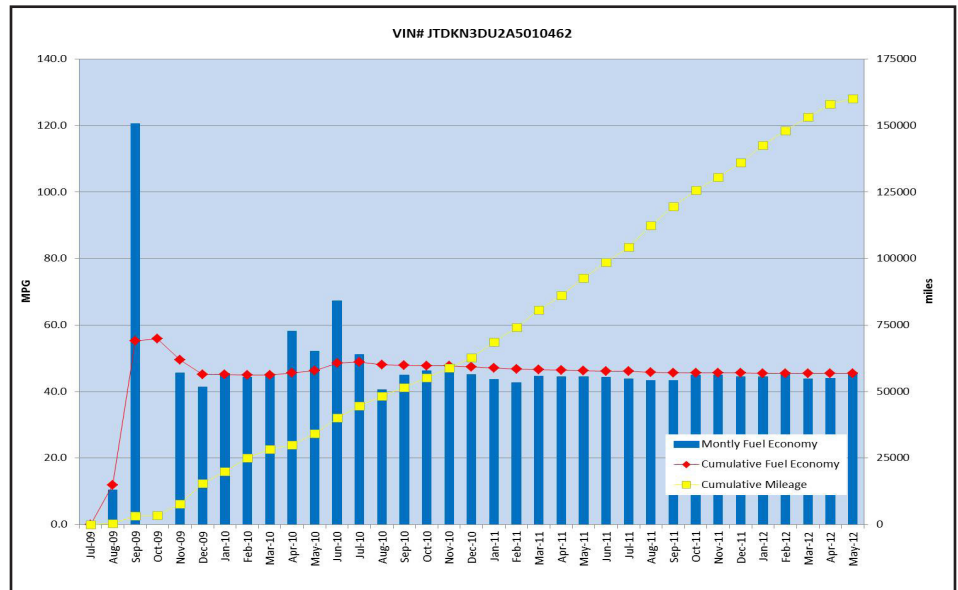
- Total miles driven: 160,144
- Cumulative MPG: 45.4

Major Operations & Maintenance

- Events:** None

*Purchase includes dealer price with options plus taxes. It does not include title, license, registration, extended warranty or delivery fee costs.

**Operating costs includes insurance, fuel, and registration costs



Monthly MPG = (miles driven)/(gallons of fuel purchased). Monthly variation in reported MPG may occur due to the difference in fuel tank level at the beginning and end of the month.