

HEV Fleet Testing - Summary Fact Sheet

Advanced Vehicle Testing Activity



2010 Honda Insight

VIN# JHMZE2H59AS011748

Vehicle Specifications

Engine: 1.3 L 4-cylinder

Electric Motor: 10 kW

Battery: NiMH

Seatbelt Positions: Five

Payload: 907 lbs

Features:

Regenerative braking

Traction control

Fleet Performance

Operating Cost:

Purchase Cost: \$25,241 (7/09)*

Kelley Blue Book: n/a

Sale Price: \$3,900 (1/13)

Maintenance Cost: \$0.03/mile

Operating Cost: \$0.11/mile**

Total Ownership Cost: \$0.28/mile

Description:

This vehicle is operated throughout the valley of Phoenix, Arizona by EZ Messenger, a legal document courier business. It is operated five days a week, transferring documents between courts, law offices, and medical facilities on city streets and urban freeways.

See HEVAmerica Baseline Performance Fact Sheet for more information

Operating Performance:

Total miles driven: 160,015

Cumulative MPG: 39.5

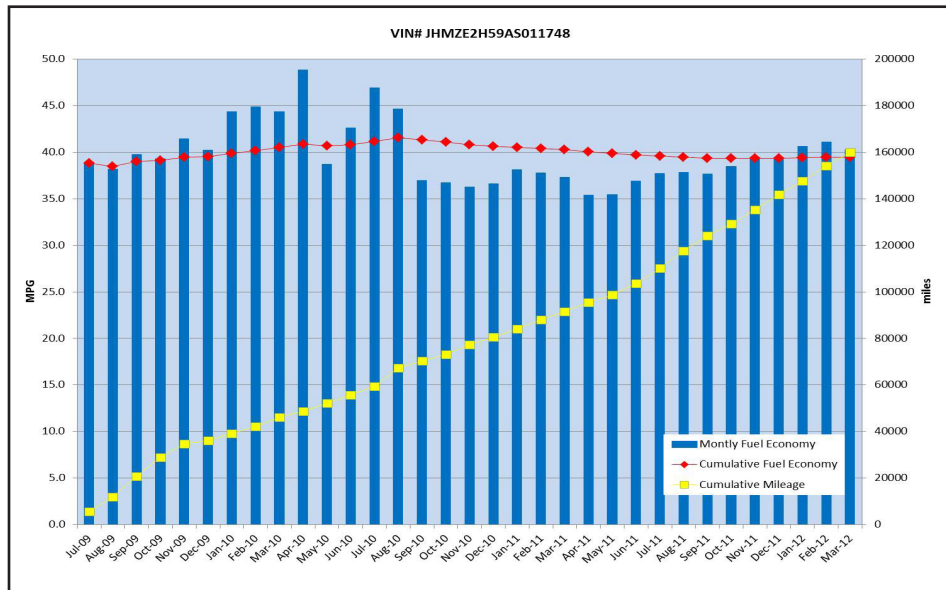
Major Operations & Maintenance

Events:

None

*Purchase includes dealer price with options plus taxes. It does not include title, license, registration, extended warranty or delivery fee costs.

**Operating costs includes insurance, fuel, and registration costs



Monthly MPG = (miles driven)/(gallons of fuel purchased). Monthly variation in reported MPG may occur due to the difference in fuel tank level at the beginning and end of the month.