

# HEV Fleet Testing - Summary Fact Sheet

## Advanced Vehicle Testing Activity



### 2010 Honda Insight

VIN# JHMZE2H78AS010141

### Vehicle Specifications

- Engine:** 1.3 L 4-cylinder
- Electric Motor:** 10 kW
- Battery:** NiMH
- Seatbelt Positions:** Five
- Payload:** 907 lbs
- Features:**
  - Regenerative braking
  - Traction control

### Fleet Performance

#### Operating Cost:

- Purchase Cost: \$26,134 (7/09)\*
- Kelley Blue Book: n/a
- Sale Price: \$4,975 (4/13)
- Maintenance Cost: \$0.03/mile
- Operating Cost: \$0.12/mile\*\*
- Total Ownership Cost: \$0.28/mile

#### Description:

This vehicle is operated throughout the valley of Phoenix, Arizona by EZ Messenger, a legal document courier business. It is operated five days a week, transferring documents between courts, law offices, and medical facilities on city streets and urban freeways.

See HEVAmerica Baseline Performance Fact Sheet for more information

#### Operating Performance:

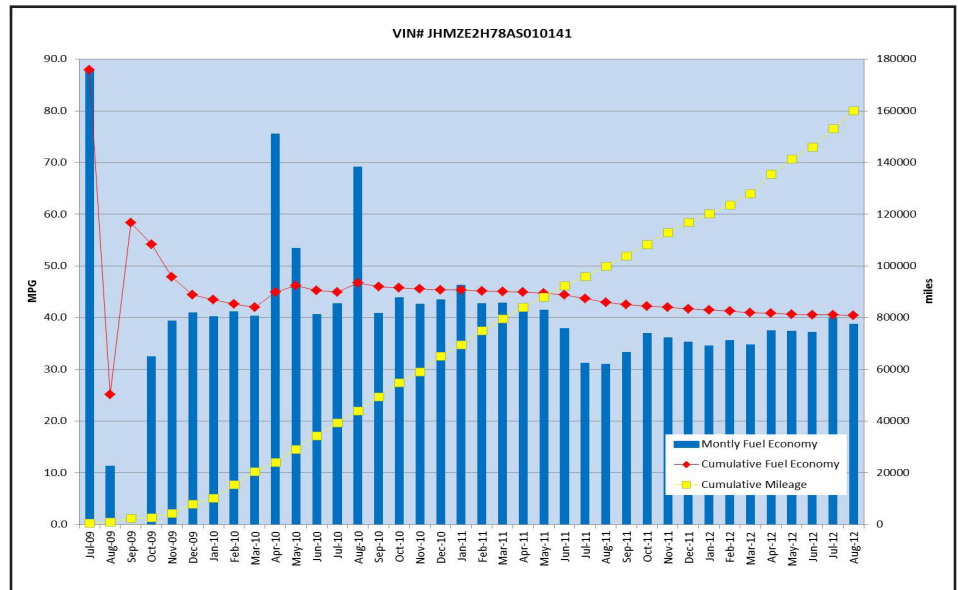
- Total miles driven: 160,172
- Cumulative MPG: 40.4

#### Major Operations & Maintenance

**Events:**  
None

\*Purchase includes dealer price with options plus taxes. It does not include title, license, registration, extended warranty or delivery fee costs.

\*\*Operating costs includes insurance, fuel, and registration costs



Monthly MPG = (miles driven)/(gallons of fuel purchased). Monthly variation in reported MPG may occur due to the difference in fuel tank level at the beginning and end of the month.