

HEV Fleet Testing - Summary Fact Sheet



Advanced Vehicle Testing Activity

2010 Mercedes Benz

VIN# WDDNG9FB5AA296231

Vehicle Specifications

- Engine:** 3.5 L V6
- Electric Motor:** 15 kW
- Battery:** Li-Ion
- Seatbelt Positions:** Five
- Payload:** 1,140 lbs
- Features:**
 - Regenerative braking
 - Traction control

Fleet Performance

Operating Cost:

- Purchase Cost: \$96,427 (9/09)*
- Kelley Blue Book: n/a
- Sale Price: \$10,500 (2/13)
- Maintenance Cost: \$0.06/mile
- Operating Cost: \$0.19/mile**
- Total Ownership Cost: \$0.91/mile

Description:

This vehicle is operated throughout the valley of Phoenix, Arizona by EZ Messenger, a legal document courier business. It is operated five days a week, transferring documents between courts, law offices, and medical facilities on city streets and urban freeways.

See HEVAmerica Baseline Performance Fact Sheet for more information

Operating Performance:

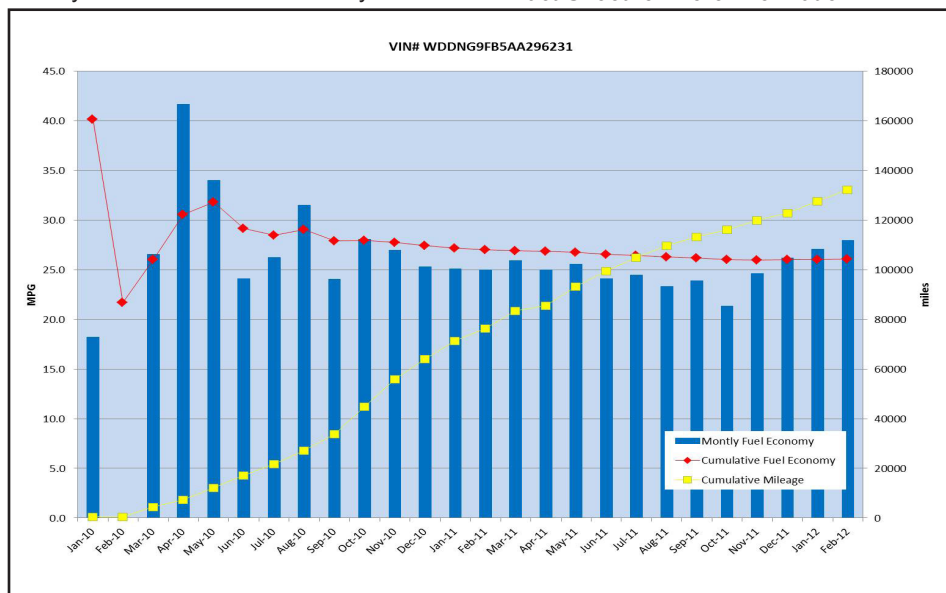
- Total miles driven: 132,123
- Cumulative MPG: 26.1

Major Operations & Maintenance Events:

3/11 Replaced rear differential @ 83,685 miles. Cost \$1,749

**Purchase includes dealer price with options plus taxes. It does not include title, license, registration, extended warranty or delivery fee costs.*

***Operating costs includes insurance, fuel, and registration costs*



Monthly MPG = (miles driven)/(gallons of fuel purchased). Monthly variation in reported MPG may occur due to the difference in fuel tank level at the beginning and end of the month.